



stethos[®] 
Technical
Presentation
W-ELP



Welcome

ELP Technical Presentation



Explanatory note:

This document explains the technical possibilities of ELP and it is not supposed to be a **selftraining**.

For receiving a training please have a look into the self training manual:

<http://welp.stethos.com/online-help/selftraining.html>



Part I: Introduction

- Requirements
- Overview
- Download free trial version
- Installation on MS Windows
- Licenses

Part II: Basic Features

- Quick Sets
- Forms
- Applying Rules
- Variables
- Bar codes
- Archiving


Part III: Advanced Features

- Digital Signature
- Distributed Printing
- Reporting and Accounting
- E-mail
- Emulations & other solutions

Summary & Wrap up

Requirements OS platform



Name	Supported platforms	Remarks
W-ELP	Windows XP, 2003, Vista, 7, 2008, 2008R2, 8, 2012, Cluster/Terminal server; 32/64bit	Enhanced features available (like e-mail support, digitally signed PDFs etc.)
X-ELP	Linux, Solaris, HP-UX, AIX, True64, VMS	Other Unix platforms can be supported upon request
B-ELP	IBM iSeries and AS/400	Not all W-ELP functions are supported
AP-ELP 	Networked Ethernet appliance which works in a TCP/IP printing environment	Optional output methods like USB or Parallel port possible, up to 56 printers can be connected
I-ELP*	Internal printer/MFP based (product is shipped on a memory flash card, existing hard disk of MFP's can be used as well)	Sold as IBS in the "Ricoh world" Sold as HP-ELP in HP world
OEM-ELP*	Depends on the 3 rd party vendor	Always bundled with a 3 rd party vendor application
S-ELP*	ANSI-C Compiler needed	Source code is supplied to the customer, various Terms and Conditions of usage are possible

Requirements Printer Drivers



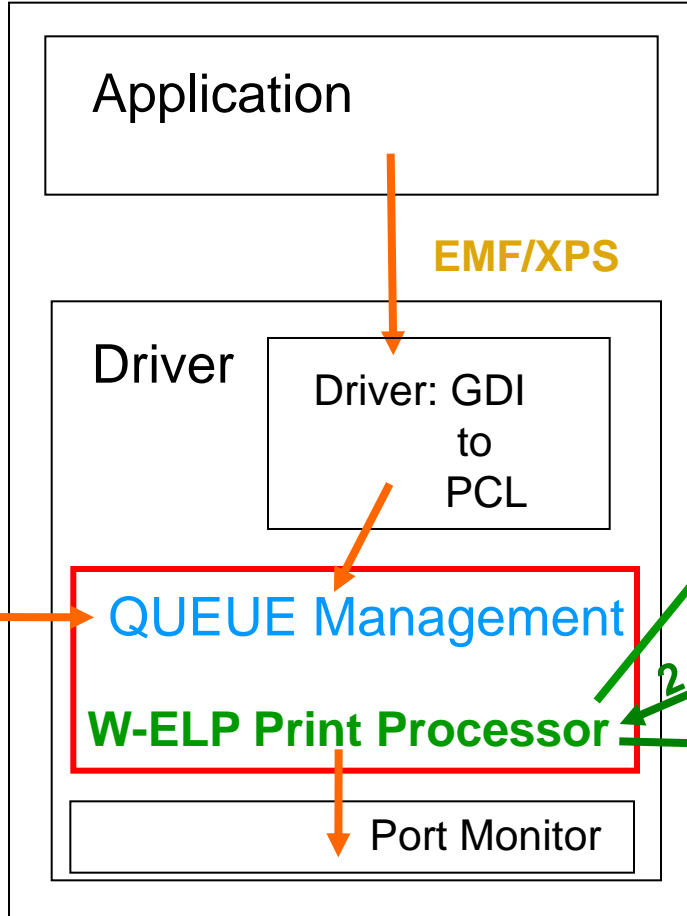
- ❖ PCL5 printer driver
- ❖ For Windows:
 - ❖ Data stream contents may vary between different drivers, operating systems and used applications!
 - ❖ Recommended Windows drivers if no device specific PCL5 driver is available from your vendor:
 - ❖ HP Color LaserJet 9500 PCL5c
 - ❖ Ricoh Aficio MP C300 PCL5c

Note: any required printer options can be setup using ELP.

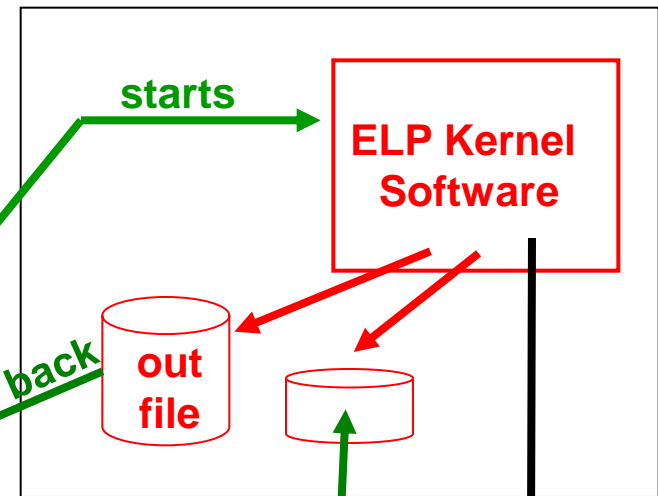


Implementation in MS Windows

MS Windows



ELP System



Data Entry via
LPR Daemon
Share Name
Port

1. check trg file

2. Read back

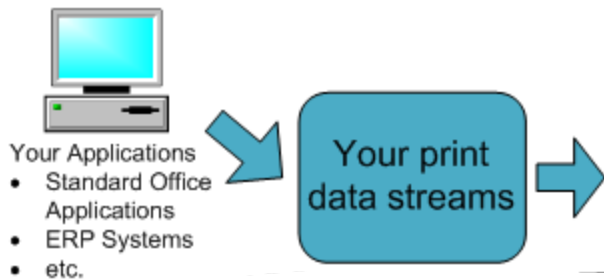


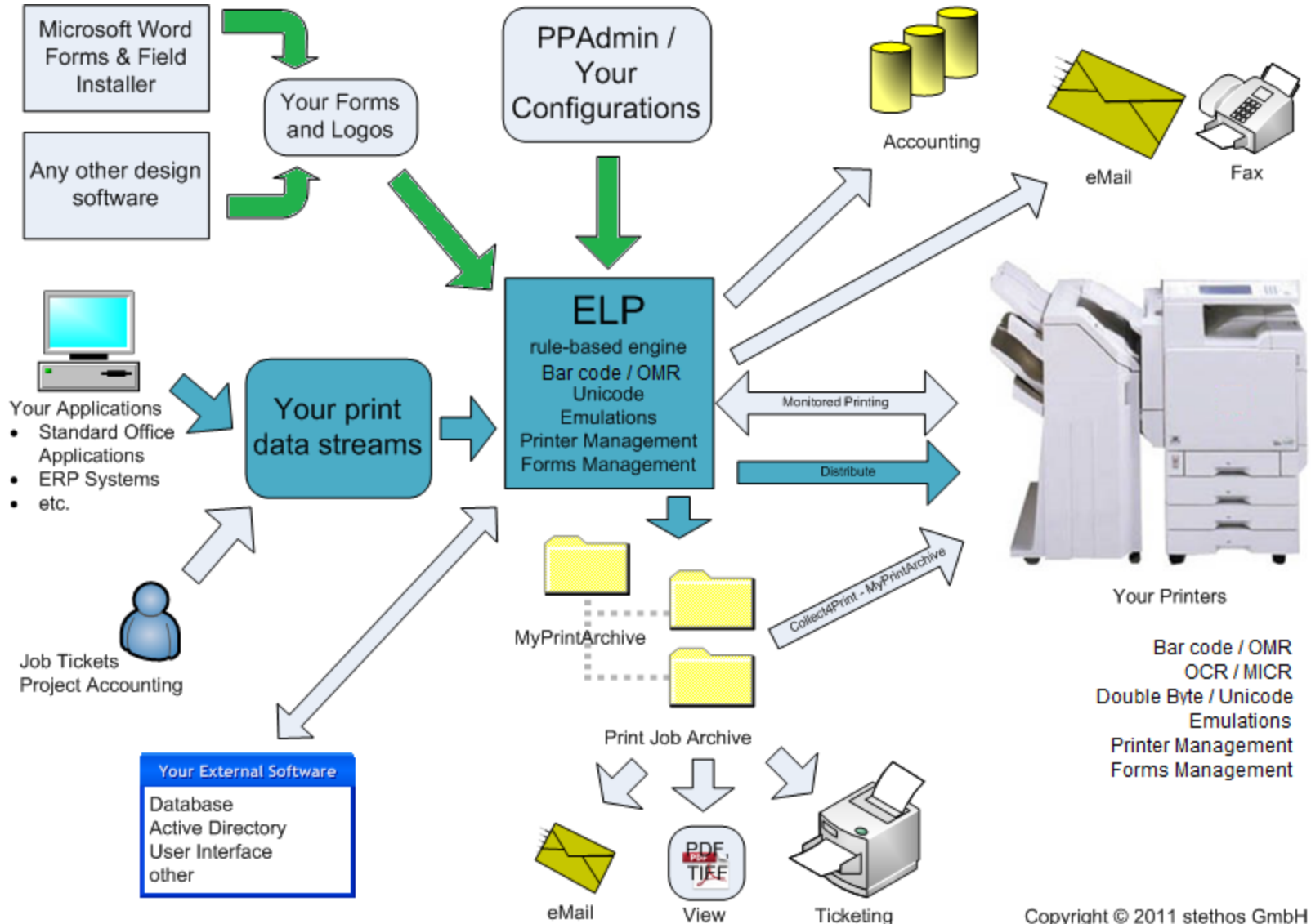
User System with USER rights



- ❖ Forms and printer handling,
e. g. stapling, tray handling, carbon copies and 50 more combinable functions
- ❖ Accounting and reporting
- ❖ Archiving, collecting and reprinting
- ❖ Distributed printing, workload balancing
- ❖ Bar codes and OMR (envelope inserters)
- ❖ E-mail and fax
- ❖ Emulations and data stream manipulation
- ❖ Monitored printing
- ❖ Unicode / Asian printing
- ❖ Toolbox with more than 300 functions

*In deed a multi-purpose tool
just like a swiss arm knife!*





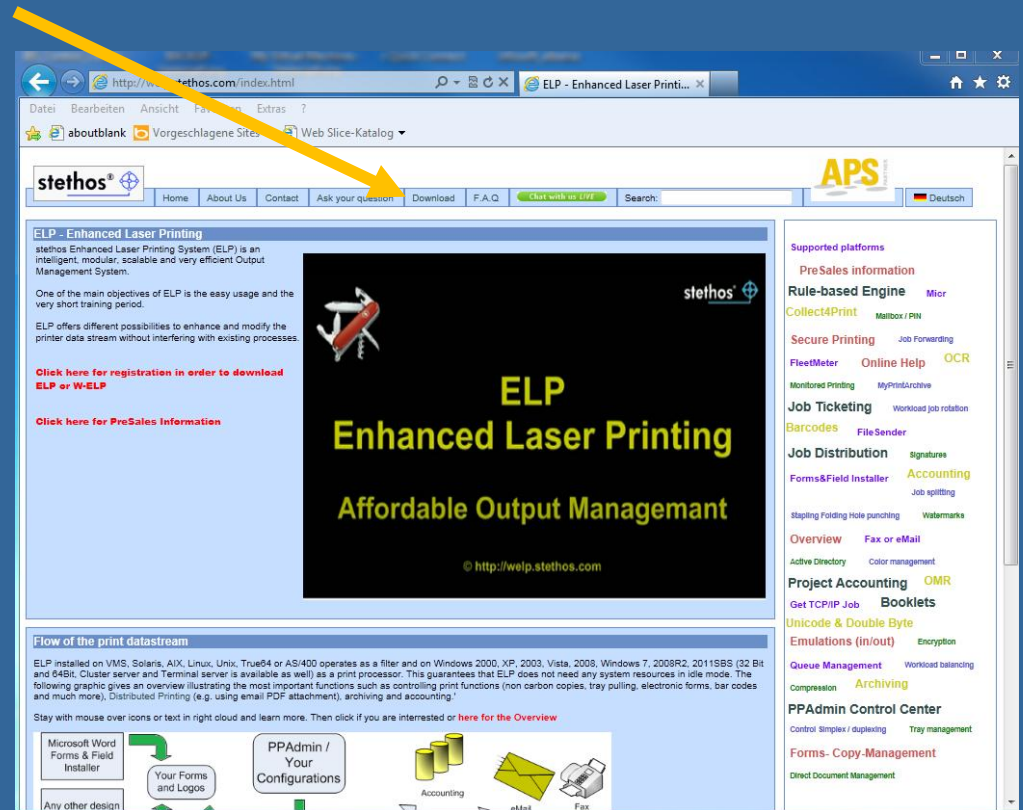
A dramatic sunset over the ocean. The sky is filled with dark, heavy clouds, with a bright orange and yellow glow from the setting sun breaking through near the horizon. In the foreground, two people are silhouetted against the water, paddling a kayak. The water is dark blue with gentle ripples. The overall mood is serene and adventurous.

Download free trial version

Download of ELP trial version



1. Go to <http://welp.stethos.com>
2. Follow the download link



The screenshot shows the website interface for stethos.com. The main content area features a large graphic with the text "ELP Enhanced Laser Printing Affordable Output Management" and a small image of a Swiss Army knife. The navigation menu at the top includes "Home", "About Us", "Contact", "Ask your question", "Download", "F.A.Q.", and "Chat with us LIVE". A yellow arrow points to the "Download" link. The right sidebar contains a list of "Supported platforms" and various service categories like "Rule-based Engine", "Secure Printing", "FleetMeter", etc.



Download of ELP trial version

1. Go to <http://welp.stethos.com>
2. Follow the download link
3. Fill in the forms

Download ELP and W-ELP Software Deutsch and English

The download of ELP and W-ELP Software is free of charge, we like to know who you are. If you do not explicitly wish to be contacted, we respect your wish. Please specify at least your name and email address:

Name:
Company:
Street/No.:
ZIP/Town:
Country:
email*:
Phone:
Fax:

Please let us know your (planned) usage of ELP:

- Bar code printing
- Electronic forms
- Non-carbon copies
- Usage of stapling and/or punching functions
- Archiving of the print spool
- Distributing or collecting of print spools
- Monitored printing
- Search and replace/change/delete in the print spool
- Printer language emulation: Kyocera Prescribe
- Printer language emulation: IBM Proprinter
- Printer language emulation: PGL or VGL or IGP10
- Other:

Which operating system you plan to use to run our software on?

- Windows
- Linux
- Solaris
- True64
- AIX
- VMS
- HP-UX
- Other:

You can write any comment if you like here:

Inform me by email about ELP or W-ELP product news

Please send me a 14 day trial license by email.

Please contact me right away

Update of an existing and productive W-ELP or ELP license:

An update will be made

Download of ELP trial version



1. Go to <http://welp.stethos.com>
2. Follow the download link
3. Fill in the forms
4. Fill in the capture and click on send

Update of an existing and productive W-ELP or ELP license:

An update will be made

If you click "send", you agree that an update of an existing ELP or W-ELP installation is only allowed according to the following terms:

You have a still valid support contract. If your installation is older than one year then please check if you bought a support contract extension. If this is not the case and you want to have an update or want to move your existing installation to another server/PC, you will have to buy a support contract. This also applies for standby servers.


The above term might be suspended by stethos if you have an explicit and written note by stethos.

Important notice:

If the software is not licensed it runs in demo mode (permanent watermark is printed on every page). It is not allowed to run ELP or W-ELP in a productive environment - only for testing purpose.
Even with a time-bombed demo license key it's not allowed to use ELP or W-ELP in a productive environment.

The above term might be suspended by stethos if you have an explicit and written note by stethos.

Please enter exactly the 6 letters and numbers in the box below. If you click on the "send" button your input is not case sensitive.



ftcvz|



Download of ELP trial version

1. Go to <http://welp.stethos.com>
2. Follow the download link
3. Fill in the forms
4. Fill in the capture and click on send
5. Download the Test Version for your platform

Note: non-Windows users should additionally download the Windows version

We highly recommend to download and install the Windows Version of W-ELP, because here you will find the manuals and further installation notes how to use ELP on non-Windows operating systems.

[Click here for the Linux incl. CUPS version \(without manual\)](#)
tested are at least Suse/Caldera/Novell/Fedora/Red Hat

[Click here for the Sun Solaris version \(without manual\)](#)

[Click here for the True64 Compaq V5.1 version \(without manual\)](#)

[Click here for the AIX version \(without manual\)](#)

[Click here for the VMS 7.2 version version \(without manual\)](#)

[Click here for the HP-UX V11 version \(without manual\)](#)

MS Windows:

[Click here for the Windows version including manual for all versions above](#)
Recommended for XP, 2003, Vista, 2008 [R2], Win 7, Terminal- and Cluster, 32 and 64 bit

[Back to main page.](#)



Installation: Unix, Linux, etc.



Requirements: PCL 5e/c data streams, any other for basic functions

Software installation process

1. Download dialect specific package from product website
2. Unpack into any directory, all files in lower case!
3. Set the convert file to executable: `chmod 777 conv...`

Functionality test

1. `./convert ./BarcodeOverview.pcl outfile`
2. send the outfile to any PCL5 capable printer

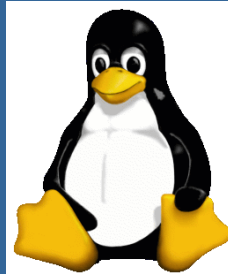
Installation even in SAP

ELP usually is piped right in front of the LP or LPR command
If in SAP the command line field is too short, call a shell script

Example:

```
/elp/convert_hp $1 STDOUT -d/welp -c/welp/convert.ini | LPR ....
```

AS/400 on request



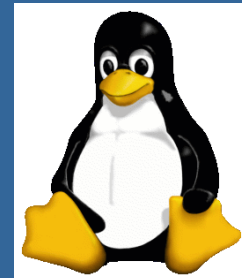


Installation: Unix, Linux, etc.



For more details please visit our online-help:

http://welp.stethos.com/online-help/user_manuals.html#Install



A sunset over the ocean with two kayakers in the foreground. The sky is filled with dramatic, dark clouds illuminated from below by the setting sun, creating a vibrant orange and yellow glow. The water is dark blue with gentle ripples. In the lower foreground, two kayakers are silhouetted against the water, paddling a small boat. The text "Installation on MS Windows" is overlaid in the center of the image in a bright yellow font.

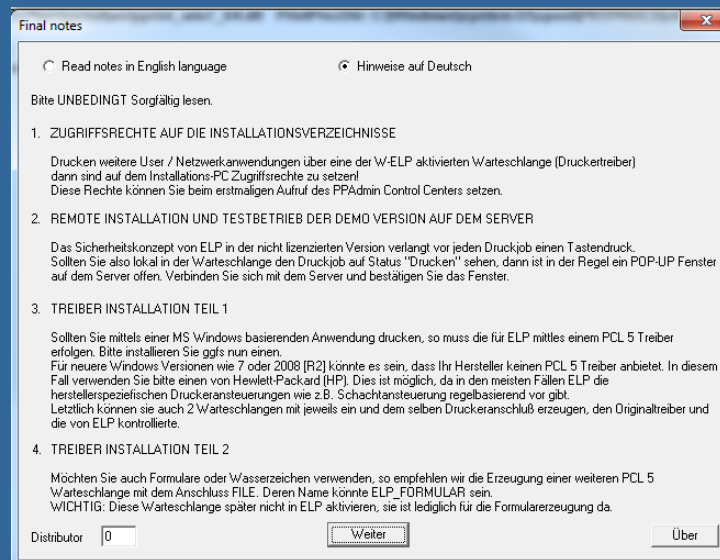
Installation on MS Windows



Installation on Windows and Start-Up Agent



1. After unzipping, just start the installer (msi file) and follow the steps described in the installation wizard.

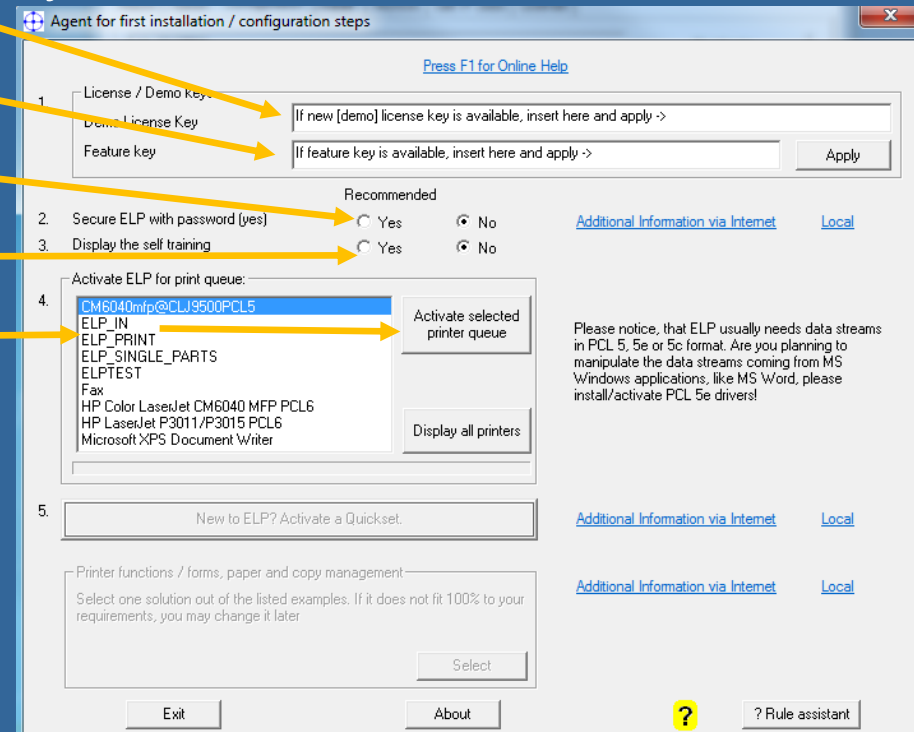


2. If you get this screen, you´re almost done. Please read the notes carefully. On ELP start-up the software checks statement 1 and 2.

Start-Up Agent of PPAAdmin Control Center



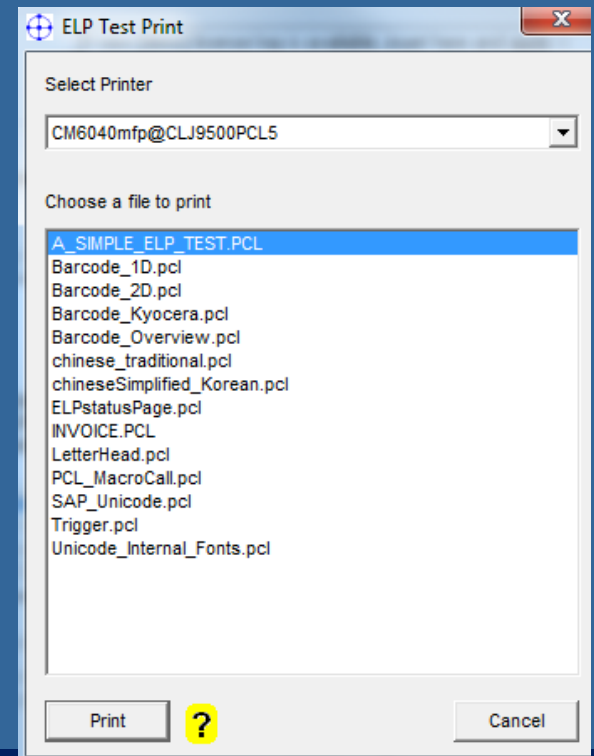
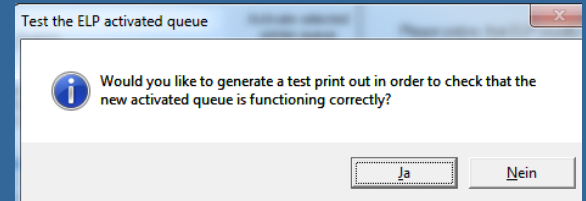
1. This agent pops up if no printer queues are activated
2. You can enter a [demo] license key
3. A feature key (if available)
4. Can setup a password:
5. Study the self training
6. Activate queues



Queue Activation Test Print



1. After activation of any queue, ELP suggest to generate a test print
2. Therefore click on yes
3. Select the printer queue for testing
4. Select the test file
“A_SIMPLE_ELP_TEST.PCL”
5. Click on print
A page with a form and a few bar codes is printed



Start-Up Agent of PPAdmin Control Center



1. This agent pops up if no printer queues are activated
2. You can enter a [demo] license key
3. A feature key (if available)
4. Can setup a password:
5. Study the self training
6. Activate queues
7. Check Quick Set samples or

Agent for first installation / configuration steps

Press F1 for Online Help

1. License / Demo keys

Demo-License Key If new [demo] license key is available, insert here and apply ->

Feature key If feature key is available, insert here and apply ->

Recommended

2. Secure ELP with password (yes) Yes No

3. Display the self training Yes No

[Additional Information via Internet](#) [Local](#)

4. Activate ELP for print queue:

ELP_IN

ELP_PRINT

ELP_SINGLE_PARTS

ELPTEST

Fax

HP Color LaserJet CM6040 MFP PCL6

HP LaserJet P3011/P3015 PCL6

Microsoft XPS Document Writer

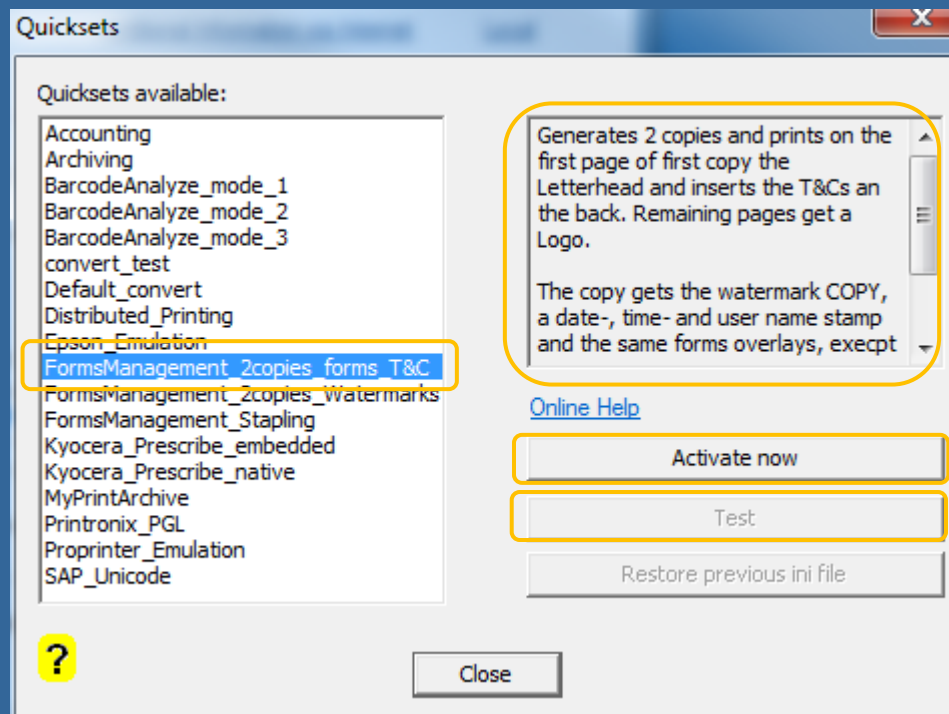
5. [Additional Information via Internet](#) [Local](#)

6. Printer functions / forms, paper and copy management

Select one solution out of the listed examples. If it does not fit 100% to your requirements, you may change it later



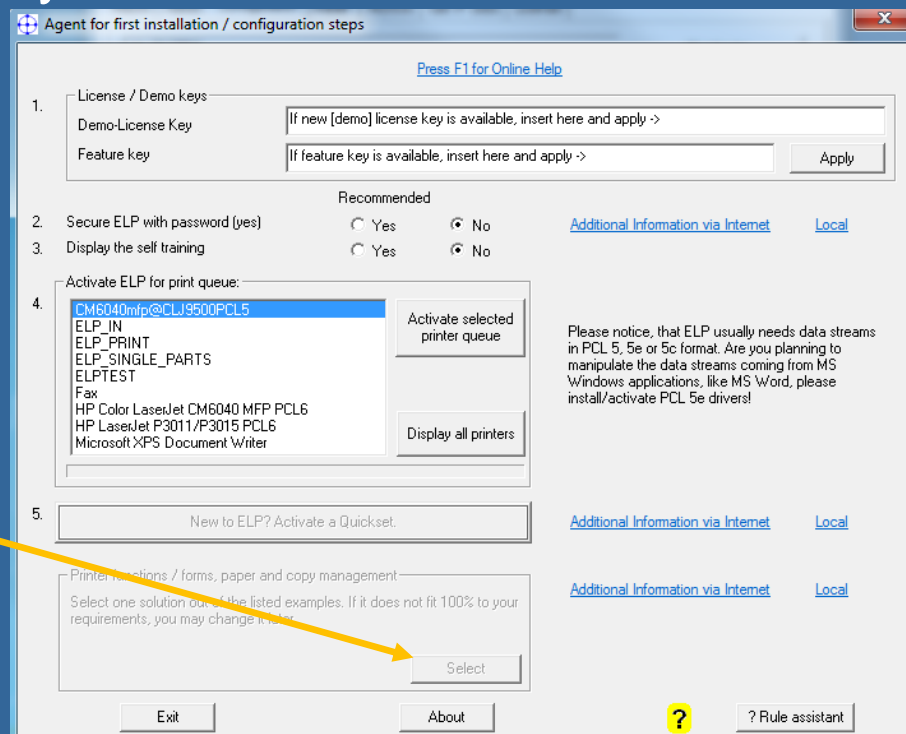
1. Browse for a suitable Quick Set
2. Study its description
3. If it fits your needs, activate it
4. Each set comes with a sample test job which displays in most cases additional information.
5. Use the set “default_convert” to restore factory settings.



Start-Up Agent of PPAdmin Control Center



1. This agent pops up if no printer queues are activated
2. You can enter a [demo] license key
3. A feature key (if available)
4. Can setup a password:
5. Study the self training
6. Activate queues
7. Check Quick Set samples or
8. Forms & printer mngt samples



Forms & Printer Management Samples



1. Browse for a suitable example
2. Study its description
3. If it fits your needs, apply it
4. Send any print job (PCL5) to an ELP-activated queue
5. To deactivate this command remove the key "ELP_Command" from section GLOBAL in the the Configuration tab

Modify the key value ✕

Examples

```

C1:RS1F500;
C1:RS1FF;C1:LF501;
C1:RS1FFF501;
C1:RS1F500FF;C1:LF501;
C1:RS1F500FF;C1:LF501;C1:1I9;C1:3I1;
C1:1S1F500FF;C1:LF501;C1:RX1F502FF;
C1:1S2A26H1F3143;C1:RF3144;
C1:1S2A26I9;C1:RI0F3144X1;
C1:RA26D0S1G500FFX#PREPAREPAGECOUNT#;C1:LF1401;
K2;C2C2;
K2;C1I9;C2I1;
K2;C1F500;C2F500F101;
K2;C1F500I1;C2F500F101I9;
R2;C1F500;C2F500F101;
        
```

Information

All pages in duplex on the front page with letter head form on all back back sides with terms _conditions inserted

Print only one copy (No K or Q Parameter used)
(C1:R) All right handed pages
----+ Duplex long page (S1)
----+ with letter head form 500 (F500)
----+ and an additional FormFeed inserted
(C1:L) All inserted pages are left handed and printed with the terms and conditions logo form 501

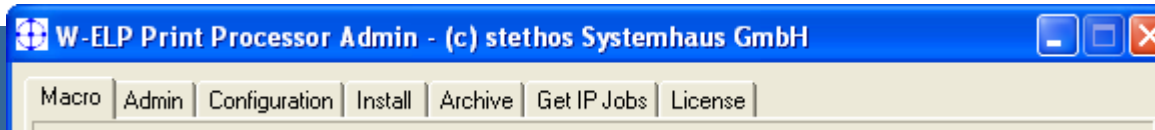
?

Start-Up Agent of PPAAdmin Control Center



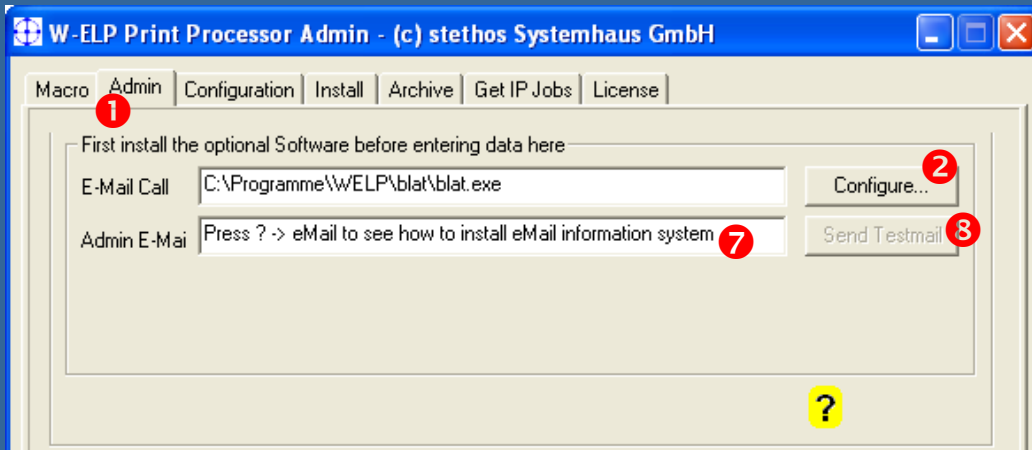
1. This agent pops up if no printer queues are activated
2. You can enter a [demo] license key
3. A feature key (if available)
4. Can setup a password:
5. Study the self training
6. Activate queues
7. Check Quick Set samples or
8. Forms & printer mngt samples
9. When done:
Exit the Start-Up Agent

PPAdmin Tabs Introduction

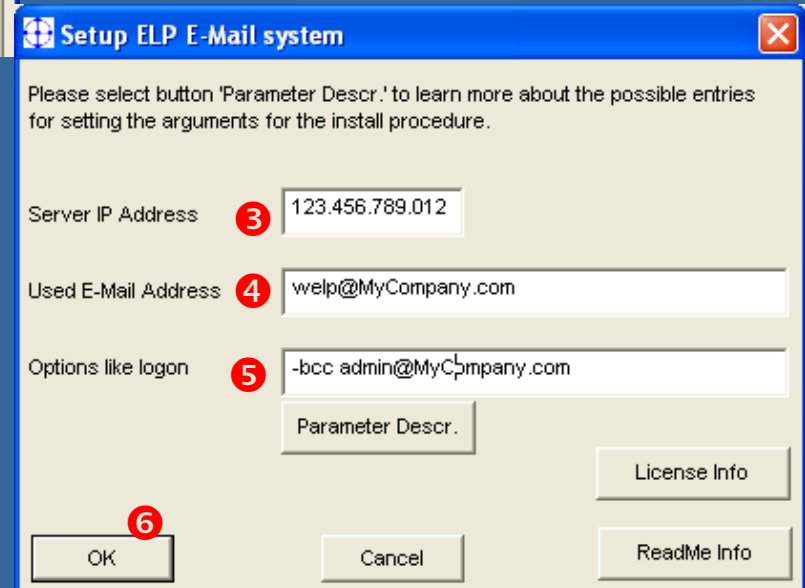


1. Macro tab: Manage and generate macros (= forms)
2. Admin tab: Recommendation: Configure the e-mail client to send notifications to admins or outbound e-mails.
3. Configuration tab: Setup the configuration and processes (main view)
4. Install tab: Activate and test printer queues, FleetMeter, Queue management
5. Archive tab: E-mail, view, reprint, delete or combine archived jobs
6. GetIPJobs tab: Manage a port listener for retrieving raw TCP/IP print jobs, send from other hosts
7. License tab: Deploy license, change language, check for required software modules (according to current configuration)

E-mail setup for admin notifications



In case a queue stops working, the listed admins get a notification e-mail.



The setting is also required for sending faxes or e-mails.

Licenses

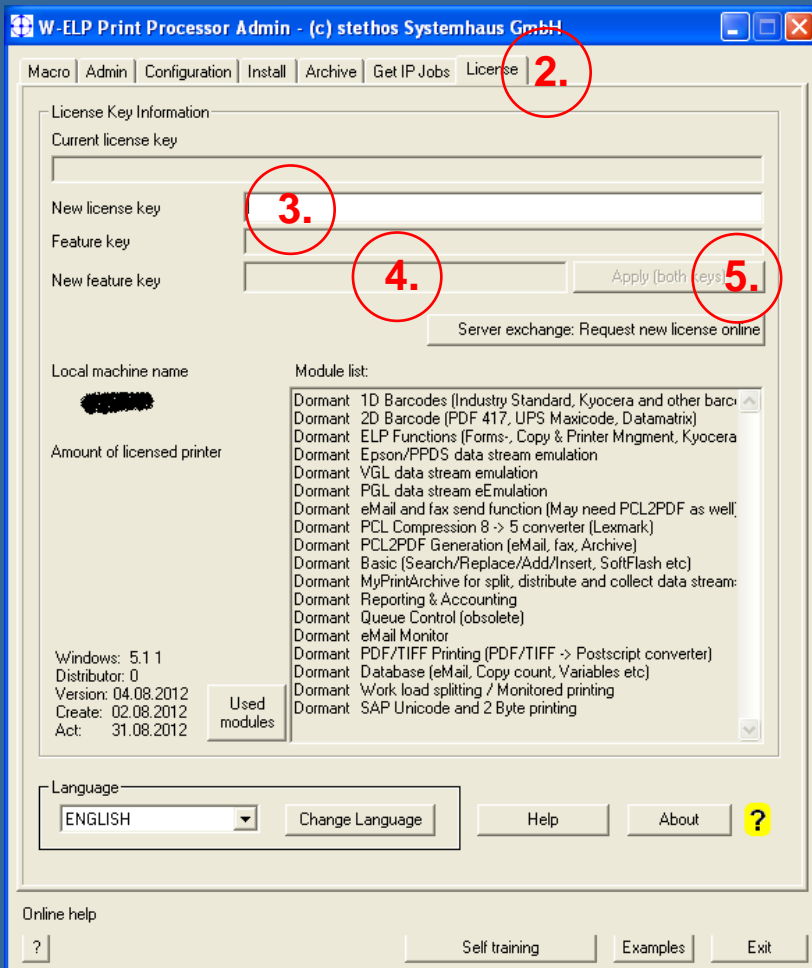




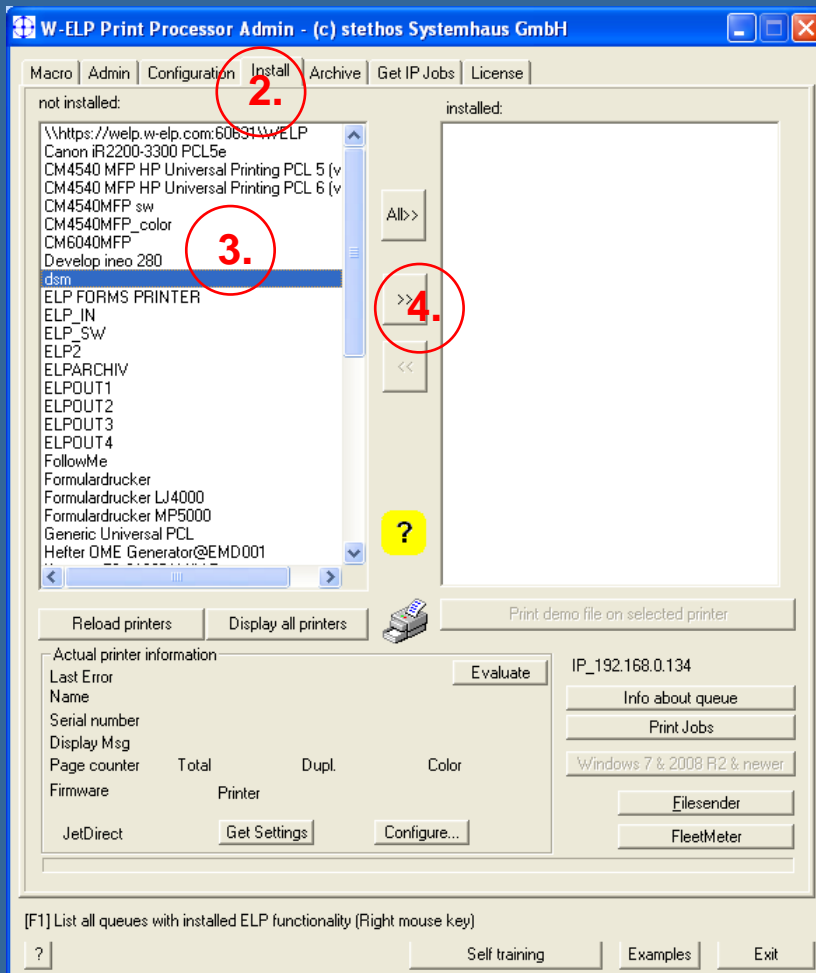
License modes under MS Windows



1. Unlicensed Demo pop-up on server for each job (for system user so please connect via 'mstsc /console') + watermark
2. Demo key No pop-up and no watermark until time-bomb explodes
3. Full license Does not expire, Enables only the purchased software modules, On usage of unlicensed functions or too many printer queues will add the demo pop-up and the watermark
4. Time-bombed full license For click selling deals, one month before license expires every day a reminder page will be printed. Benefit: Your competition needs to repurchase, you need only to renew the maintenance contract.
5. Multi server company license - On request



1. Make sure that W-ELP Control Center was started with admin rights (right-click).
2. Open the tab „license“.
3. Enter the new license or demo key.
4. Enter the new feature key (if available).
5. Click on „Apply“.
6. If you have internet connection a message about your license activation is sent to stethos. If you don't have any internet connection the software will work none the less.
7. Online help: <http://welp.stethos.com/online-help/license-tab.html>



1. Make sure that W-ELP Control Center was started with admin rights (right-click).
2. Open the tab „Install“.
3. Highlight your printer queue.*
4. Click on the button „>>“ to activate the queue.
5. Recommendation: Run the offered test.
6. Online help: <http://welp.stethos.com/online-help/install-tab.html>

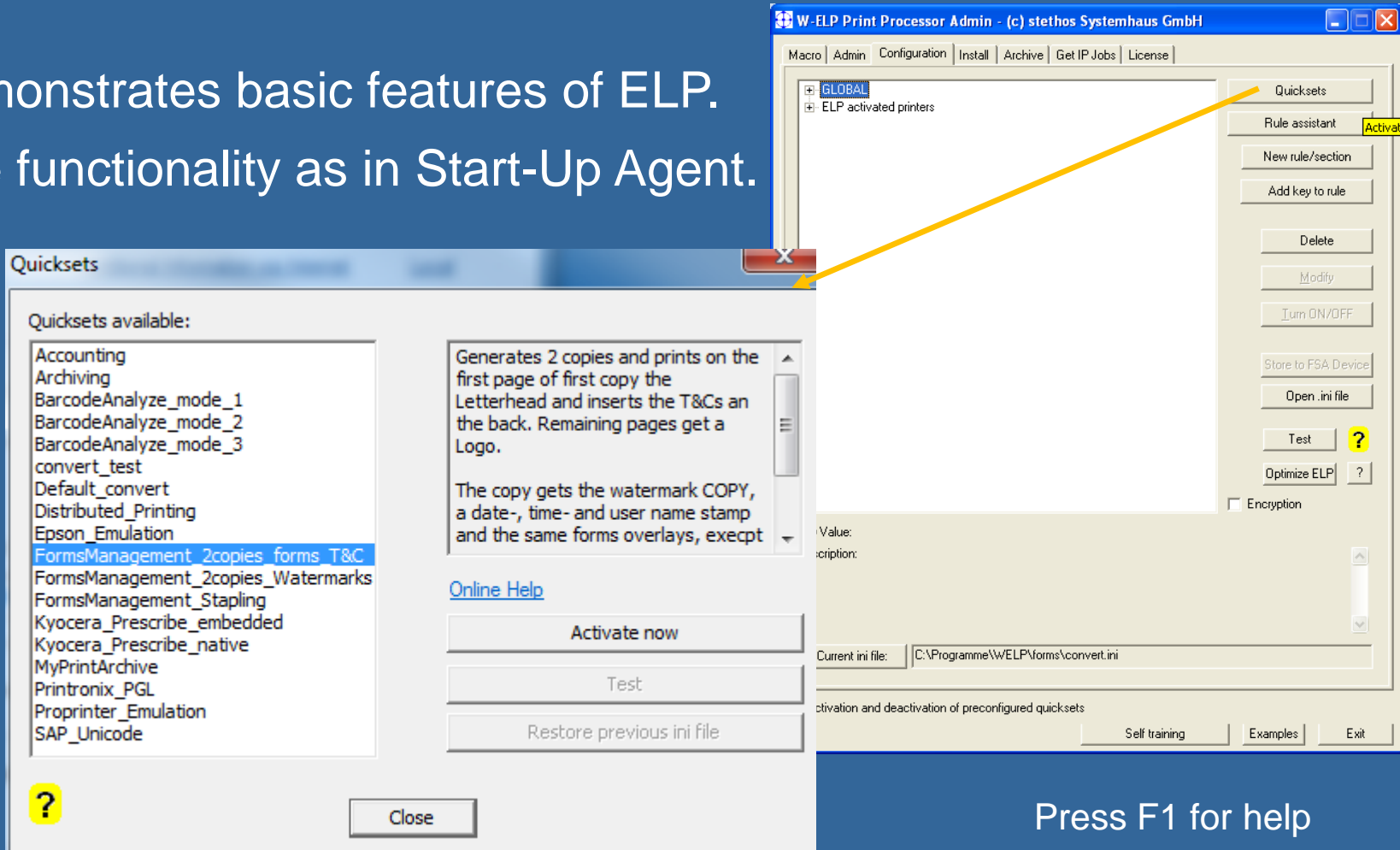
* See online help in case your printer queue is not listed.

A person is kayaking on the ocean at sunset. The sky is filled with dramatic, dark clouds illuminated from below by the setting sun, creating a vibrant orange and yellow glow. The water is dark blue with gentle ripples. The kayaker is silhouetted against the water, holding a paddle. The kayak has the word "PIONEER" visible on its side.

Basic Features: Quick Sets



Demonstrates basic features of ELP.
Same functionality as in Start-Up Agent.



The image shows two overlapping windows from the W-ELP Print Processor Admin application. The background window is titled "W-ELP Print Processor Admin - (c) stethos Systemhaus GmbH" and has a menu bar with "Macro", "Admin", "Configuration", "Install", "Archive", "Get IP Jobs", and "License". The main area shows a tree view with "GLOBAL" and "ELP activated printers". On the right, there are buttons for "Quicksets", "Rule assistant" (with a yellow "Activated" label), "New rule/section", "Add key to rule", "Delete", "Modify", "Turn ON/OFF", "Store to FSA Device", "Open .ini file", "Test" (with a yellow question mark), "Optimize ELP" (with a yellow question mark), and "Encryption". The "Current ini file" is set to "C:\Programme\WELP\Forms\convert.ini".

The foreground window is titled "Quicksets" and has a "Close" button. It contains a list of "Quicksets available:" with "FormsManagement_2copies_forms T&C" selected. The description for this quickset is: "Generates 2 copies and prints on the first page of first copy the Letterhead and inserts the T&Cs on the back. Remaining pages get a Logo. The copy gets the watermark COPY, a date-, time- and user name stamp and the same forms overlays, except". Below the description are buttons for "Online Help", "Activate now", "Test", and "Restore previous ini file". A yellow question mark icon is in the bottom left corner.

Press F1 for help

Basic Features: Forms



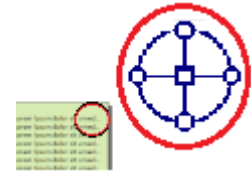


ELP Output Management (OM) Printing, Overview



Banner pages,
copies

- Static form generation
with any software, simply
design and print to file
Color and B/W
Watermarks, Signatures etc
Install by click



Logo, forms



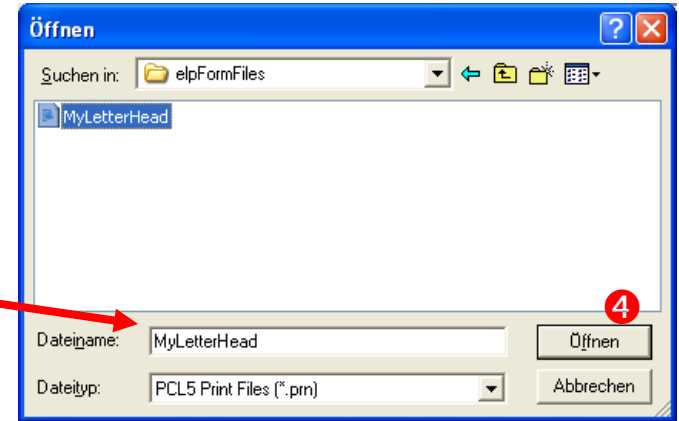
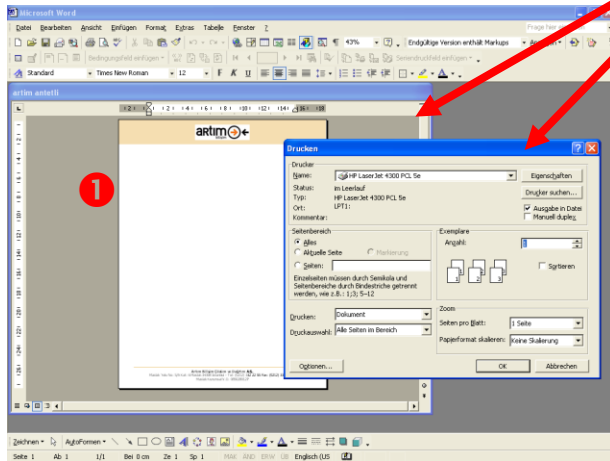
T&C insertion

- Reprints with settings of
Paper trays,
Forms and Overlays,
Simplex/Duplex,
Out trays,
Stapling
Printer initialization
Setup by click



Varying copies

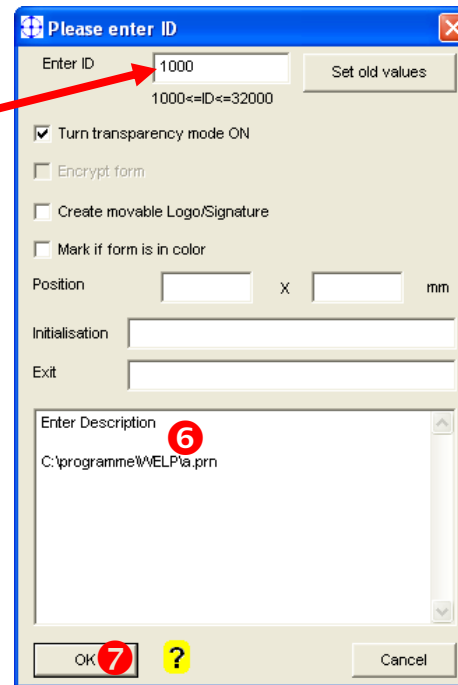
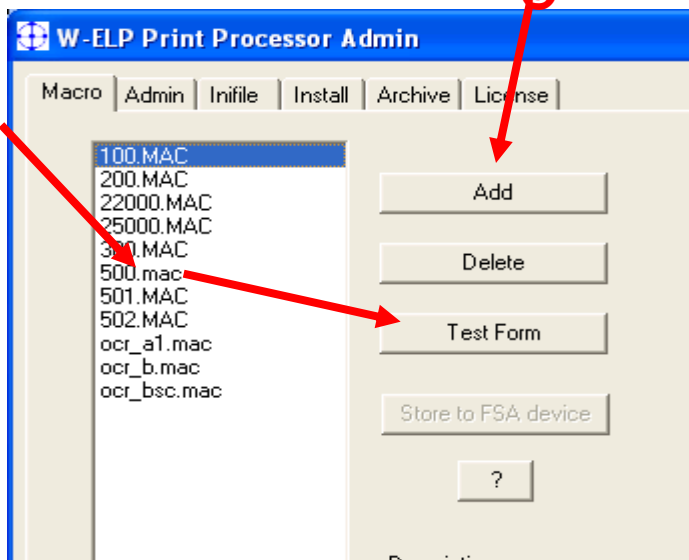
Forms generation



PCL 5 reference driver recommendations:

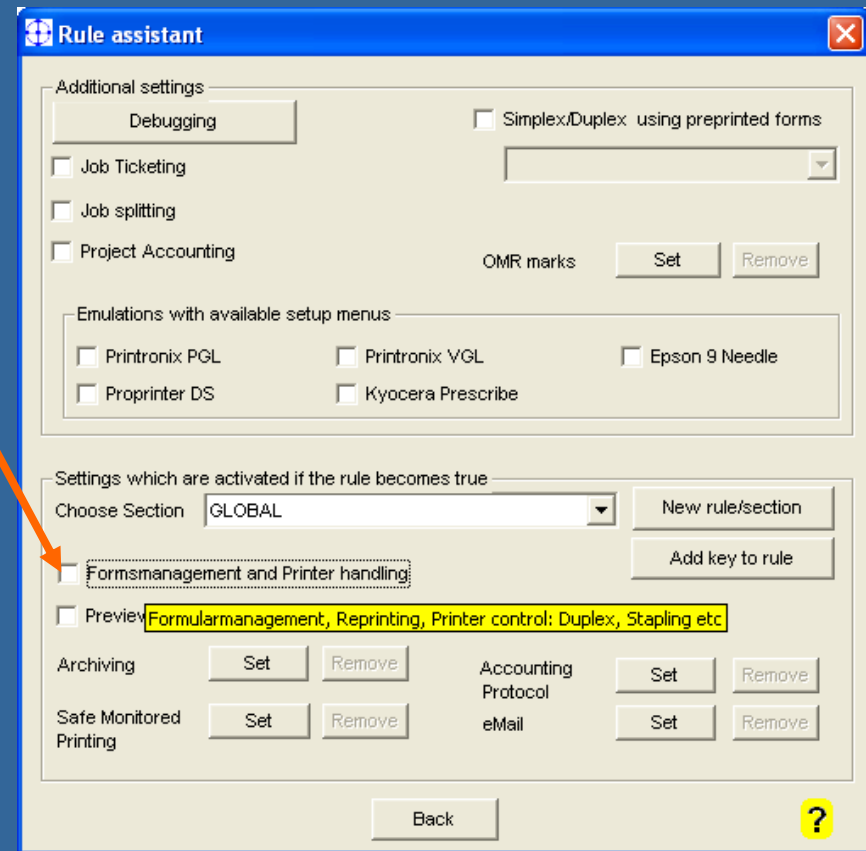
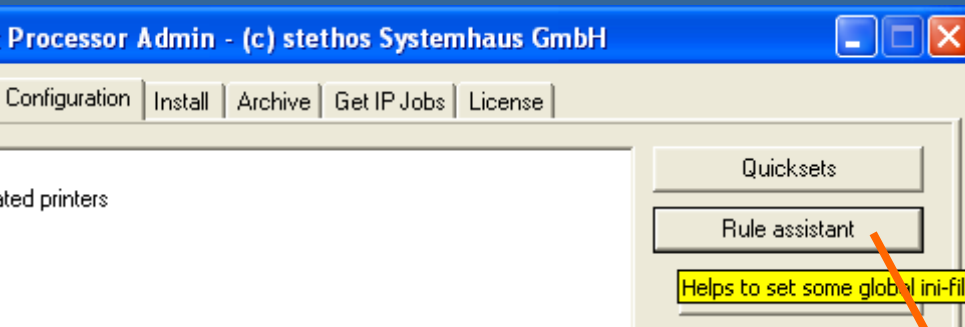
B/W: HP LaserJet 5200 PCL5e

Color: HP Color LaserJet 9500 PCL5c



9 Open PPAAdmin, tab config, add / select the ELP_Command in section GLOBAL, Modify, Generator, deselect form 500 and add the new form, close and reprint your test file.

Forms and Printer Management



First time:
Config tab
Rule assistant
Forms management & printer handling

Changing:
Double-click on ELP_Command in rule

stethos[®] ELP Command Generator



Page / copy specific forms insertion

Reprints with stapling, punching, PIN, etc.

Paper management

In/out paper tray control,
Simplex/Duplex,
Color Management
Insert FormFeeds (T&C)

PDF Preview

> 50 Sample settings

More Functions

Position prints
Do not print page
Auto. macro generation
Initializations
Collections



Example: A letterhead on every page

ELP command generator

Nr. of Copies: 2 Order: Whole docs (Collated) Automatic sorting

Stapling: Ricoh: One staple on top left of paper (200)

Settings for each copy or even each page

Select Copy #: 1 Select Page #: All (remaining) pages

Available Macros: 100.MAC, 1000.mac, 10006.mac, 10007.mac, 1001.mac, 1002.mac, 1003.mac, 1004.mac, 1005.mac, 1007.mac, 101.MAC, 1010.mac, 102.MAC, 1020.mac, 1022.mac, 1026.mac

Added Macros: F Cmd 502.MAC

Input Tray: Printer / driver default

Output Tray: Printer / driver default

Form Overlay: None

Duplex/Simplex: Printer / driver default

Color handling: Printer / driver default

Paper size: Printer Default

Do NOT skip perforation

Move X: Y: Add and delete

K2;C1:1F500;C1F502;T200;

OK Cancel Macro Description ELP Test Print Examples ? ?

For ASCII alike data streams you may set some printer initialisations

Configuration (archive printing) Save Delete

Modify the key value

Examples

C1F500;
C1:1O500;
C1H1F500;
C1:1F23000;
C1:1H1F500;
C1:1H1O500;
C1:1H;C1H1F502;
C1:1H;C1H1F500;
C1:1H;C1:2H1O500;
C1:1H;C1H1F500;T102;
C1:1F500;C1F502;
C1F500;C1:#PREPAREPAGECOUNT#H;
C1:1-#PREPAREPAGECOUNT#G1000;
C1:1S1H;C1:#PREPAREPAGECOUNT#H;

Information

Put on first page form A (Letter head) on all remaining pages form B (logo)

Print only one copy (No K or Q Parameter used)
(C1:1) Put on the first page the letter head form 500
(C1) On the remaining pages goes the logo form 502

Apply ? Close

A lot of examples for more complex scenarios.
See description after highlighting a sample.



ELP_Command page side analysis



Print job in Duplex, insert terms & conditions on each back page

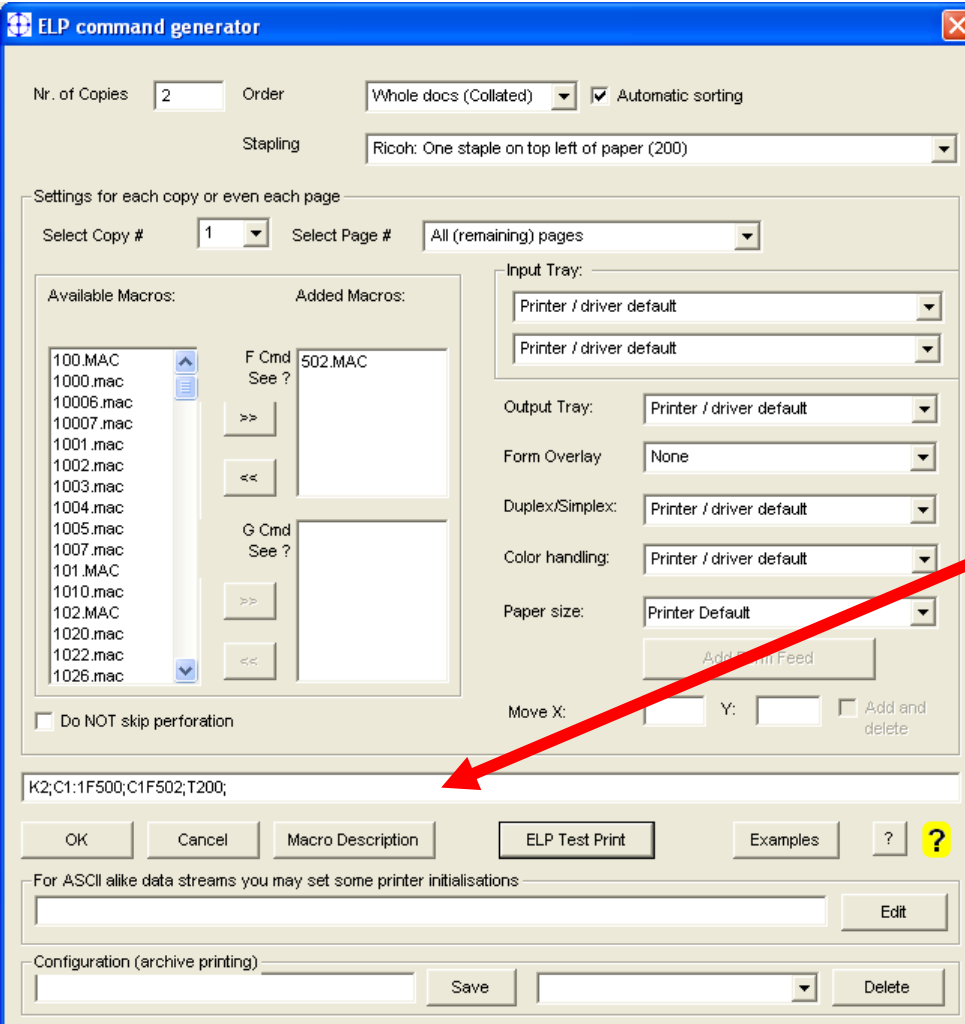
Search for C#:R...;	All right-hand pages (front pages)	C1:RS1FF;
Search for C#:L...;	All left-hand pages (back pages)	C1:LF501;

Combination page side and page number:

C1:1F500;C1:RS1FF;C1:LF501;

Prints on first page the company letterhead and inserts on every back page the T&Cs.

> 50 ELP_Command functions can be combined



- ❖ Banner page
EB22000;
- ❖ Colored water marks
C1:1G3000F500;
- ❖ Page-, Job-, any counter
C1F25000;
- ❖ Stapling
T100;
- ❖ Last page tray handling
C1:#PREPARSEPAGE
COUNT#19;
- ❖ The 50 commands

Exercise

ELP_Command



If time available:

Page 1: Letterhead form (500) and printed on plain paper

Remaining middle pages: Simplex and logo (502)

Last page: From tray with colored paper.

```
C1:1S1I1F500;C1S0F502;C1:#PREPARSEPAGECOUNT#S0I3;
```

What needs to be changed: Insert T&Cs on back page of the first page?

A dramatic sunset over the ocean. The sky is filled with dark, heavy clouds, with a bright orange and yellow glow from the setting sun breaking through near the horizon. The water is dark blue with gentle ripples. In the lower foreground, two kayakers are silhouetted against the water, paddling a small boat. The kayaker in front is holding a paddle. The overall mood is serene and adventurous.

Basic Feature: Applying Rules



Before reading the 1. Bytes
Fixed rule names →

GLOBAL For every job

User-name

Printer-name

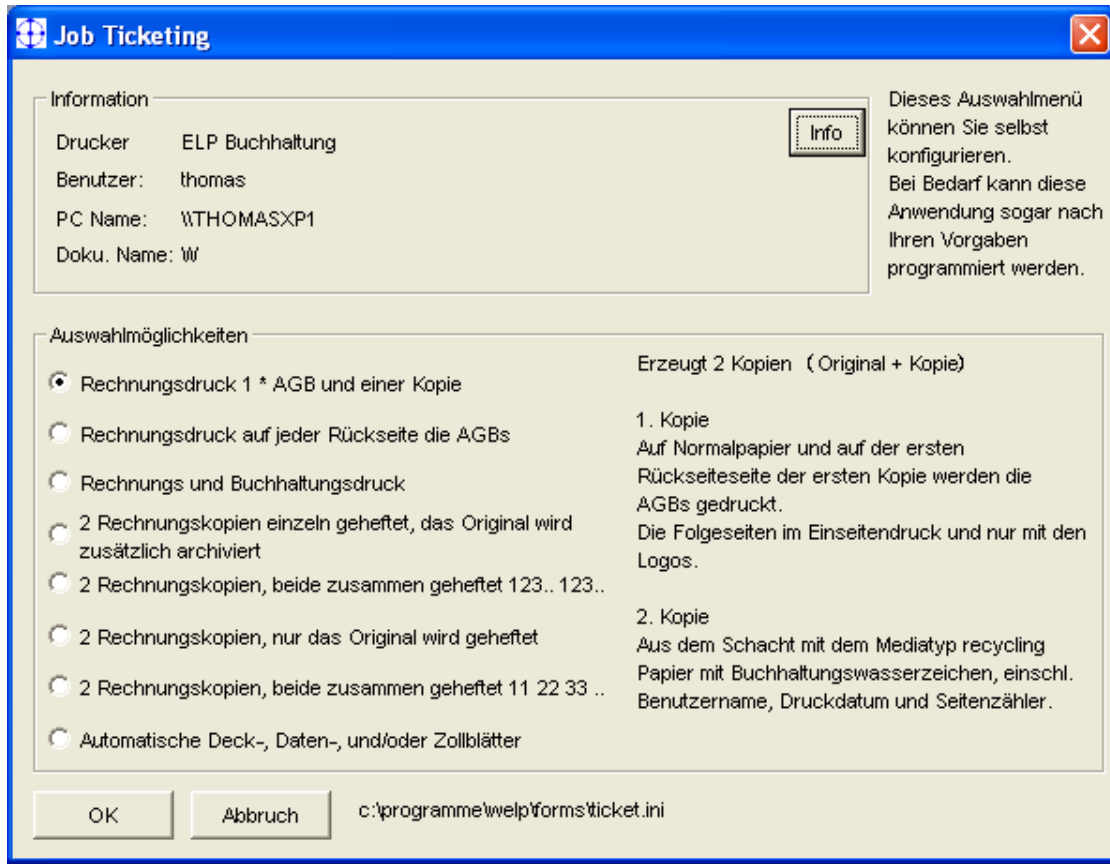
Driver-name

Portname

External Software

Rules are activated by default

Job ticketing
 Project accounting
 own rules



↓ ↓ ↓ ↓ ↓
Activate all functions by setting the proper keys →



Before reading the 1. Byte
Fixed rule names

While reading the
Data stream

Final analysis before
starting to write out

GLOBAL

Printer name

User name

Driver name

Port name

External Software

Rules are activated by default

Job ticketing
Project accounting
own rules

Search

- Binary
- Windows[_New]
- Text[_New]
- Row/Col

- Erase
- Replace
- Insert
- Add
- StoreNextWord

OR combined

Automatic replace variables

Trigger rules

Primary rules:

- Binary
- Windows[_New]
- Text [_New]

Secondary rules:

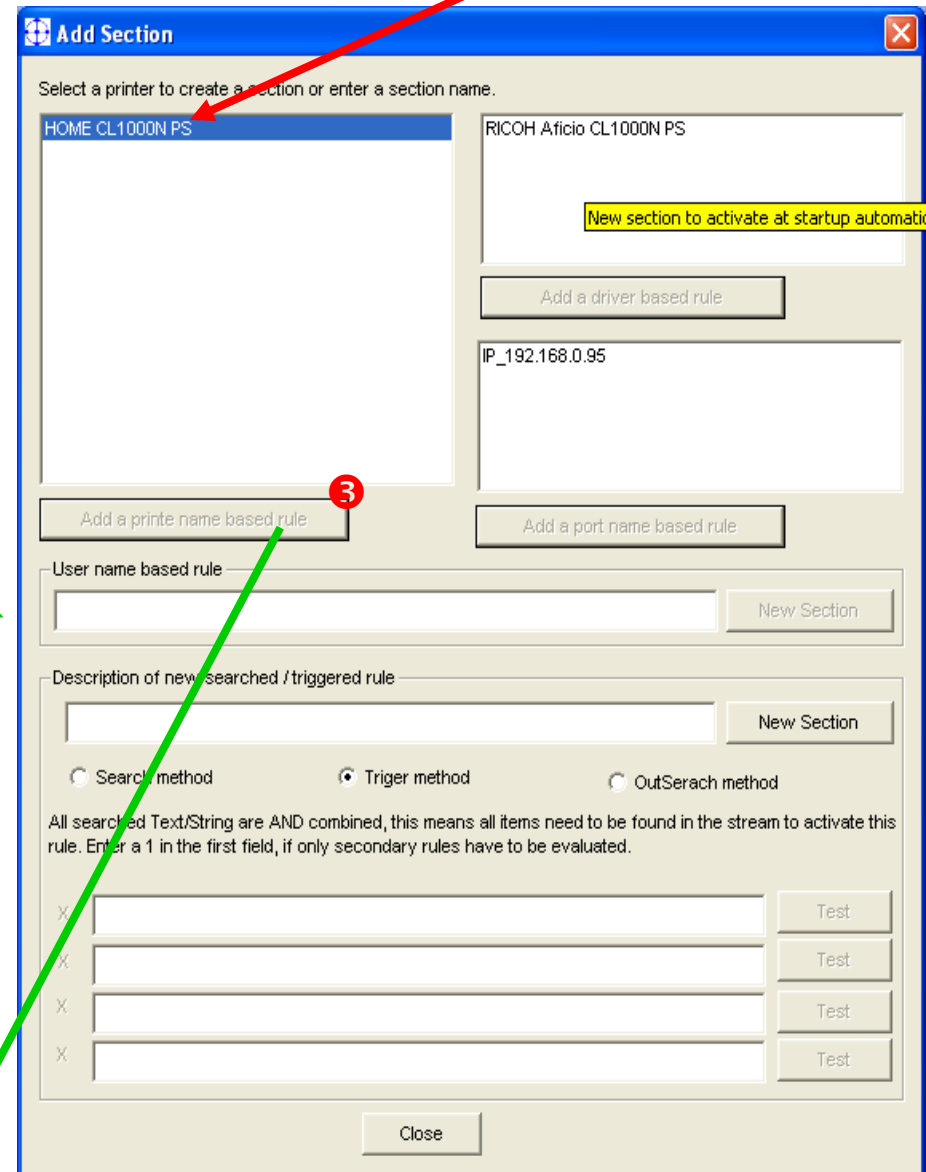
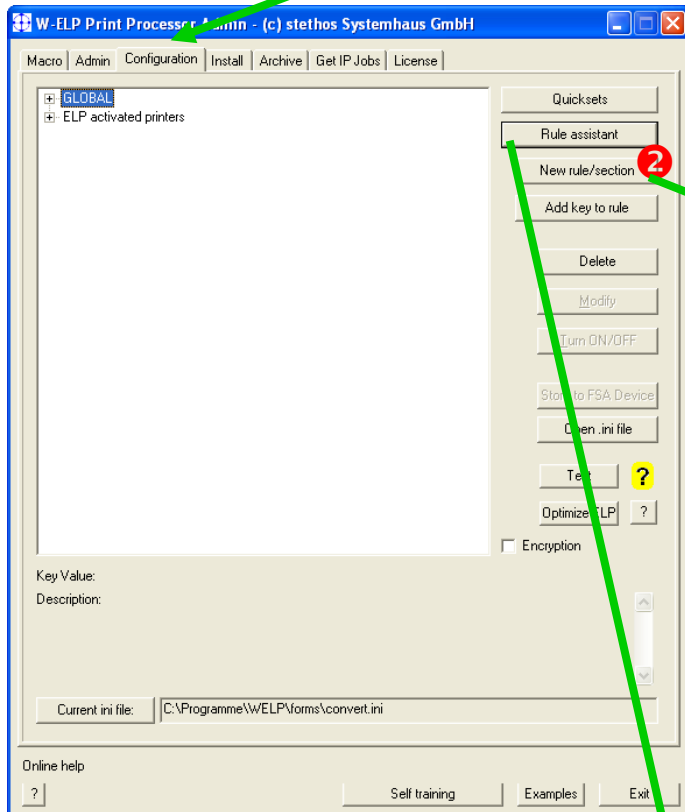
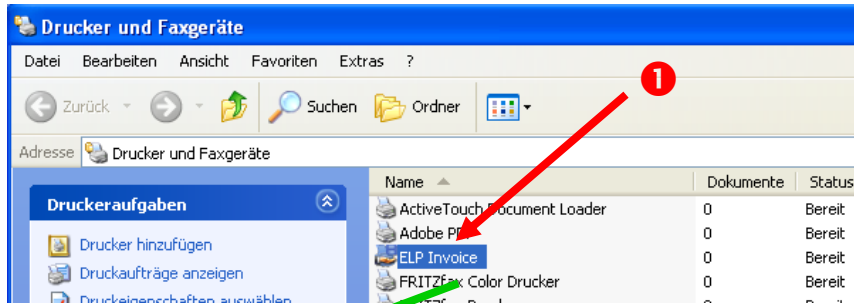
- page size
- Orientation
- Resolution
- Simplex/Duplex
- User names
- Printer names
- Variables

AND combined per rule
If ... then ... else

Activating all keys and processes

OutSearch

Define invoice printing for a specific queue, part 1



Rule Assistant

Define invoice printing for a specific queue, part 2

Rule assistant

Additional settings

Debugging

Job Ticketing

Job splitting

Project Accounting

Simplex/Duplex using preprinted forms

OMR marks

Emulations with available setup menus

Printronix PGL Printronix VGL Epson 9 Needle

Proprinter DS Kyocera Prescribe

Settings which are activated if the rule becomes true

Choose Section: **ELPARCHIV**

Formsmanagement and Printer handling

Preview of data stream Job counter

Archiving Accounting Protocol

Safe Monitored Printing eMail

Call ELP_Command Generator for forms management

ELP command generator

Nr. of Copies: 2 Order: Whole docs (Collated) Automatic sorting

Stapling: Ricoh: One staple on top left of paper (200)

Settings for each copy or even each page

Select Copy #: 1 Select Page #: All (remaining) pages

Available Macros:

- 100.MAC
- 1000.mac
- 10006.mac
- 10007.mac
- 1001.mac
- 1002.mac
- 1003.mac
- 1004.mac
- 1005.mac
- 1007.mac
- 101.MAC
- 1010.mac
- 102.MAC
- 1020.mac

Added Macros:

- F Cmd: 502.MAC

Input Tray: Printer / driver default

Output Tray: Printer / driver default

Form Overlay: None

Duplex/Simplex: Printer / driver default

Color handling: Printer / driver default

Paper size: Printer Default

Rules, based on data stream content



Add Section

Select a printer to create a section or enter a section name.

CP ELP DATA IN 4plus
ELP Buchhaltung
ELP Hauptdrucker

HP LaserJet 4050 Series PCL 5e
HP LaserJet 4M Plus

Add a driver based rule

FILE:
NULL

Add a printer name based rule

Add a port name based rule

User name based rule

Description of new searched / triggered rule

1 This is my invoice rule

2 Search method Trigger method OutSearch method

All searched Text/String are AND combined, this means all items need to be found in the stream to activate this rule. Enter a 1 in the first field, if only secondary rules have to be evaluated.

3 InvoiceExample

4 Test

Close

Note

Searched Text/String was found!

5 OK

Secondary trigger keys

This menu displays the most important secondary trigger keys. They can even more precise the rule definitions.

Limited to those printers: {Name;Name;...}

Limited to those users: {Name;Name;...}

and this orientation: Nothing selected, not used

and Simplex/duplex printing: Nothing selected, not used

and resolution: Nothing selected, not used

and paper size: Nothing selected, not used

and paper tray: Nothing selected, not used

If this rule does not apply, then nothing selected, not used perform this rule:

Exit Cancel ?

Trigger on variables (several variabelen are possible)

Add key #Variable# :||k|> Value or #Variable#

Next Step



OR combined

- **SEARCH_BINARY**
any binary data, incl. Hex 00
- **SEARCH_WINDOWS[_NEW]**
Positioning Sequences are ignored
- **SEARCH_TEXT[_NEW]**
Like search_windows, but not case sensitive

AND combined

- **Trigger_BINARY**
- **Trigger_WINDOWS[_NEW]**
- **Trigger_TEXT[_NEW]**

- **SEARCH_ROWNO**
Any printable information can be inserted at the beginning of this row, or data stream text can be captured to variables.

Let the test function decide which search/trigger method to use!!



Add Section ✕

Select a printer to create a section or enter a section name.

RICOH Aficio CL1000N PS

Add a driver based rule

Add a printer name based rule

IP_192.168.0.95

Add a port name based rule

User name based rule

New Section

Description of new searched / triggered rule

New Section

Search method
 Trigger method
 OutSerach method

All searched Text/String are AND combined, this means all items need to be found in the stream to activate this rule. Enter a 1 in the first field, if only secondary rules have to be evaluated.

X	My Trigger 1	Test
X	My Triger 2	Test
X		Test
X		Test

Close

Secondary trigger keys ✕

This menu displays the most important secondary trigger keys. They can even more precise the rule definitions.

Limited to those printers: {Name;Name;...}

Limited to those users: {Name;Name;...}

and this orientation

and Simplex/duplex printing

and Simplex/duplex printing

and paper size

and paper tray

If this rule does not apply, then perform this rule:

Trigger on variables (several variablen are possible)

 #Variable# :|K|> Value or #Variable#

special Search keys, if needed ✕

This menu displays some keys, who are only interpreted, after a search key was found in the data stream.

StoreNextWordToVariable

StoreNextWordToIntVariable

Add Text (Add_Binary)

Insert text (Insert_Binary)

Replace text

Evaluate trigger section

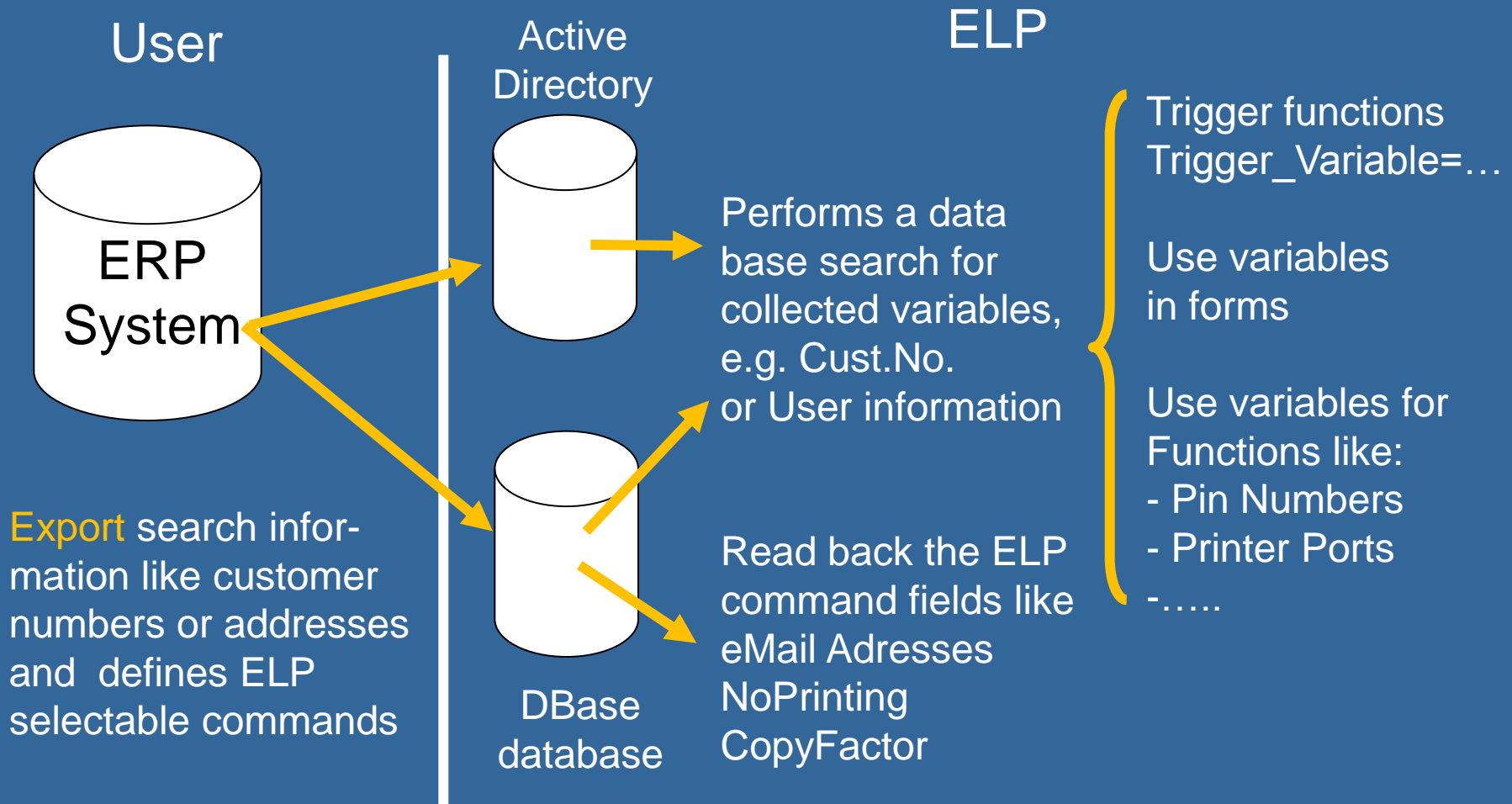
Evaluate trigger section after SortNext...

Increase Counter

Speed up, analyse no further keys
 Search this item only once



Data base and / or Active Directory



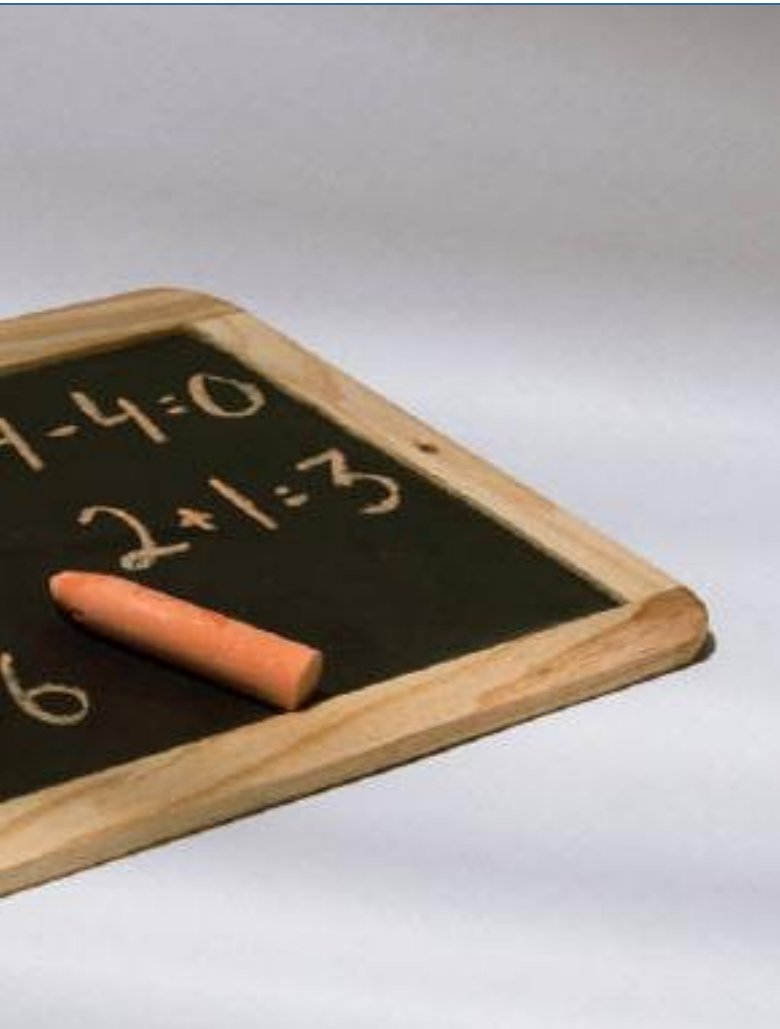
A photograph of a sunset over the ocean. The sky is filled with dark, dramatic clouds, with a bright orange and yellow glow from the setting sun breaking through near the horizon. In the foreground, two people are silhouetted in a kayak on the water, holding paddles. The water is dark and reflects the colors of the sky.

Basic Features: Variables

Some predefined variables



#ACTTIME#	#PCNAME# (Job)	
#DATENUM#	#HOSTNAME# (PC)	
#DATETEXT#	#PRINTDOCNAME#	
#DATETEXT_D#	#PRINTDOCNAME_UNI#	
#DATETEXT_PL#	#PRINTERDRIVERNAME#	
#DATESERIAL#	#PRINTERNAME#	
#MILLISECONDS#	#PRINTERSHARENAME#	#IN_ELP_FILENAME#
#MONTH#	#USERNAME#	#OUT_ELP_FILENAME#
#MONTH_D#	...	#ELP_FORMS_PATH#
#MONTH_PL#		#ELP_PROG_PATH#
#WEEKDAY#		#LAST_ARCHIVE_FILE#
#WEEKDAY_D#		#RANDOM#
#WEEKDAY_PL#		...
#TODAYNUM#	#JOB_COUNTER#	
...	#PEPARSEPAGECOUNT#	
	...	
	#YourVariable#	



- Searched Variable
 - Search + StoreNextWord or of page from Row, Col, Length, SubString-functions
- Loaded Variables
 - Variable-Files, passed in from external applications; environment variables
- Search for any collected variable(s) in a DBase III or Active Directory and read back ELP control functions, like NoPrinting, e-mail addresses, ...



Can be used in

- Macros / forms e.g. watermarks, date stamps or [page] counters
- For calculations like loops or counters
- Triggering rules
- Accounting
- Transport information between jobs

Variables Usage

Forms & Field Installer



Forms
Data stream
External applications
Reporting files

ELP Forms Management

Select already provided variables

Next Previous First Last

Variable type: Unknown, Barcode, Text, Table

Add Change Delete

ELP Ini file for reading variables: C:\Programme\WELP\forms\convert.ini

Browse

Set ELP startup ini-file

Exit Generate Macro About

Text field

Font definition

Name	Style	Color	Alignment
Courier	Normal	Black	Left
Letter Gothic	Italic	White	Right
CG Times	Bold		
Univrs	Bold-Italic	<input type="checkbox"/> Underline	
Univrs Cond.			
Arial			
OCR-B scalable			
OCR-B 12 pt			
OCR-A 12 pt			

Symbol set: IBM PC-8 (10U), IBM PC-8 D/N (11U), IBM PC-850 (12U), IBM PC-858 € (13U), IBM PC-852 (17U), IBM PC-866 (3R)

Size in CPI: 12

Orientation: Print direction, 90 degree, 180 degree, 270 degree

Variable text to be placed in field: #Variable#

Get variable

Save Cancel Last text def.

Variables Usage

Forms & Field Installer



ELP Forms Management

Select already provided variables

Next Previous First Last

Variable type

- Unknown
- Barcode
- Text
- Table

Add Change Delete

ELP Ini file for reading variables

C:\programme\WELP\forms\convert.ini Browse

Set ELP startup ini-file

Exit Generate Macro **1** About

Text field

Font definition

Name	Style	Color	Alignment
Courier	Normal	Black	Left
Letter Gothic	Italic	White	Right
CG Times	Bold		
Univers	Bold-Italic		
Univers Cond.		<input type="checkbox"/> Underline	
Arial			
OCR-B scalable			
OCR-B 12 pt			
OCR-A 12 pt			

Symbol set

- IBM PC-8 (10U)
- IBM PC-8 D/N (11U)
- IBM PC-850 (12U)
- IBM PC-858 € (13U)
- IBM PC-852 (17U)
- IBM PC-866 (3R)

Size in CPI: 12

Orientation

- Print direction
- 90 degree
- 180 degree
- 270 degree

Variable text to be placed in field

#Variable# **Get variable**

Save Cancel Last text def.

Get Variable

```
#TODAYNUM#
#WEEKDAY#
#WEEKDAY_D#
#WEEKDAY_PL#
#MONTH#
#MONTH_D#
#MONTH_PL#
#DATESERIAL#
#DATENUM#
#DATETEXT#
#DATETEXT_D#
#DATETEXT_PL#
#ACTTIME#
#MILLISECONDS#
-----
#PCNAME#
#USERNAME#
#PRINTDOCNAME#
#PRINTERNAME#
#PRINTERSHARENAME#
#PRINTERDRIVERNAME#
#VAR_TCPIP_PORT#
-----
#PRINTERLANGUAGE#
#VAR_PAGESIZE#
#VAR_ORIENTATION#
#VAR_RESOLUTION#
#VAR_SIMPLEXDUPLEX#
#VAR_PAPERTRAY#
-----
#PREPAREPAGECOUNT#
#PAGECOUNT#
```

Use Cancel

Barcode definition

Type

- Code 3of9 (24670)
- Code 3of9 extended (26480)
- Zof5 interleaved (24640)
- Zof5 industry (24650)
- Zof5 matrix (24660)
- Code 93 (24690)
- Code 93 extended (24691)
- Deutsche Post 25 Leitcode 11 (246)
- Deutsche Post 25 Leitcode 13 (246)
- Codabar (24750)
- Code 128 auto (24700)
- Code 128 A (24701)
- Code 128 B (24702)
- Code 128 C (24704)
- UCC 128 (24710)
- EAN 128 (24720)

Height: 18

Width of small line: 6

Width factor of wide line: 3

Check Sum

Orientation

- Print direction
- 90 degree
- 180 degree
- 270 degree

Readable text style

- Courier
- Letter Gothic
- Univers
- Univers condensed
- CG Times Roman
- OCR-B (great for EAN)

Default

Readable text position

- Default
- No readable text
- Full embedded below
- Halfembedded below
- Below barcode
- Top of barcode

SAP Print Control definition

Print: Esc (s0p300h18v6,18s6,18b24670T)

Hex: 1B2873500033303068313876362C313873362C313862323436373054

Variable text to be placed in field

#Variable# **Get variable**

Save Cancel Last code def.

A sunset over the ocean with two people in a kayak in the foreground. The sky is filled with dramatic, dark clouds illuminated from below by the setting sun, creating a vibrant orange and yellow glow. The water is dark blue with gentle ripples. In the lower foreground, two people are silhouetted in a kayak, one holding a paddle. The overall mood is serene and peaceful.

Basic Features: Bar codes



Barcodes

According to the industry standard, SAP etc.

- Over 60 one dimensional codes
- Automatic checksums
- Automatic data checking
- Free scaling in X and Y direction
- Two dimensional codes
 - PDF417, Data Matrix, Maxicode, QR Code
- FreeEscape or Search + Replace
- Barcoding in emulations:
 - Brother – OKI – Cobra Box – PSI
 - Postscript – Epson - Prescribe





OCR-B: European banking and postal address font

A B C D F E 1 2 3 4 5

OCR-A1: German check printing

A B C D F E 1 2 3 4 5 ²μ³

Both are automatically loaded into the printer when used in the data stream.



Magnetic Ink Character Recognition, or MICR, is a character recognition technology used primarily by the banking industry to facilitate the processing of cheques.

MICR is standardized by ISO 1004:1995.

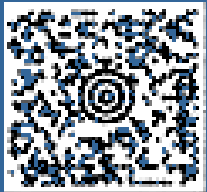
The major MICR fonts used around the world are E-13B and CMC-7.





- ❑ A bar code is like text, only YOU mostly can't read it
- ❑ There are about 20 important types of bar codes.
- ❑ The good thing is: The client tells you which one he needs
- ❑ Bar codes are standardized ISO / DIN etc.
- ❑ They are often industry specific (Car Industry Code 39)





UPS Maxicode

2-D Bar codes

All characters from 0 to 255



Data Matrix

Up to 4 times 1.5K of Data



PDF 417

High redundancy (check sum)



New!
QR Code

Most common 2D bar code nowadays



1-D Bar codes

Alpha-numeric	Code 39 (3of9) 0-9 A-Z ./, space Code 93; Code 128; EAN 128 (Full ASCII)
Numeric only	2of5 matrix / industry / interleaved Codabar EAN 8 / 13, UPC A / E, MSI
Spezial	KIX, FIM, Postnet



Full specification in the User-Manual and Technical Reference Manual



1-D Bar codes

Most important codes

123456

Code 39:
check sum optional

123456



2of5 interleaved
check sum optional

<p"8>



Code 128
always has a check sum

Â,BXLÈ





1-D Bar codes **Stroke/Space Ratio**

Code 39 and 2of5 (interl): 1:2 ... 1:3



All the others: 1:2 or EAN/UPC 1:2:3:4





All you need to know:



Types: 1-D, 2-D and 3-D Bar codes

Coded data: Alpha-numeric; Numeric; full ASCII; 8 bit

Check sum: some have [optional] check sum,
2D/3D usually redundancy
additional user related check sums

Ratio 1-D: Code 3of9, 93, 2of5 interl. 1:2 up 1:3

stethos[®] Intelligent Bar code system



Font-like parameters description for 1-D bar codes!

P parameter Esc(s#p

Control if/how human-readable (caption) text is printed with bar code

0 Use default value

1 Don't print human readable text

2 Print human readable text embedded

3 Print human readable text half embedded

4 Print human readable text under code

5 Print human readable text above code

6 Print human readable text half above code

7 Print human readable text full embedded above code

Specials:

Add 10 to print UPC/EAN/JAN checksum middle left rather than bottom left of bar code.

Add 10 to print start & end * characters with 39 bar code text

Add 20 to format French and German postal barcodes

Add 100 to print checksum character with text.

Add 124 to print the German Post barcode

stethos[®] Intelligent Bar code system



Font-like parameters description for 1-D bar codes!

h parameter Esc(s4p#h

Controls what font is used for the human-readable (caption) text

Format: *CBA*, numeric value, where

C: Style 0 Use Default (Bold)

1 Use Regular

2 Use Italics

3 Use Bold

4 Use Bold Italic

B: Size 0 Use automatic font size

A: Typeface 0 Use Courier to print text (default)

1 Use Letter Gothic to print text

2 Use Univers to print text

3 Use Univers Condensed to print text

4 Use CG-Times to print text

5 Use OCR-B to print text (great with UPC/EAN)

Example: text in Univers Bold Italic, automatic size: Esc(s...402h...



Font-like parameters description for 1-D bar codes!

v parameter `Esc(s4p102h#v`

Short bar height in points (1/72 inch). Same unit as fonts. Minimum sizes apply.

Example: Bar code in point size 87: `Esc(s...87v...`

s parameter `Esc(s4p102h45v#1,#2[,#3,#4]s`

Space Widths

#1, bar width, first (thin) width in dots (1/600 inch)

#2, bar width, second width in dots (1/600 inch)

Code 3of9, 93 and 2of5 interleaved: #2 is between $2 * \#1$ and $3 * \#1$

all others #2 is 2 times #1

Only for EAN, UPC and Code 128 Bar codes please extend:

#3, bar width, third width in dots (1/600 inch)

#4 bar width, fourth width in dots (1/600 inch)

Example: Thin bars 4 dots, thick bars 8dots: `Esc(s...4,8b....`

b parameter `Esc(s4p102h45v5,15s#1,#2[,#3,#4]b`

Bar Widths (same as bar width)

stethos®



Intelligent Bar code System

Font-like parameters description for 1-D bar codes!



t parameter Esc(s4p102h45v5,15s5,14b#T

24600,	UPC-A	24620,	EAN/JAN-8	24785,	Australia 4 State 37-CUST
24601,	UPC-A +2	24621,	EAN/JAN-8 +2	24760,	MSI
24602,	UPC-A +5	24622,	EAN/JAN-8 +5	24786,	Australia 4 State 52-FF-MET
24610,	UPC-E	24630,	EAN/JAN-13	24761,	MSI +CHK10
24611,	UPC-E +2	24631,	EAN/JAN-13 +2	24787,	Australia 4 State 67-FF-MET
24612,	UPC-E +5	24632,	EAN/JAN-13 +5	24762,	MSI +CHK10+CHK10
24640,	25 interleaved	24650,	25 industrial	24788,	Australia 4 State FCC-45
24641,	25 interl + CHK	24651,	25 indust + CHK	24763,	MSI +CHK11+CHK10
24642,	German Postal 25 13	24660,	25 matrix	24780,	Singapore 4 State
24643,	German Postal 25 11	24661,	25 matrix + CHK		
24670,	39 (3of9)	24700,	128 autoswitch		Non standard JetMobile Barcodes:
24671,	39 + CHK	24701,	128 A	24823	BCUPS
24672,	39 encode space	24702,	128 B	24801	BPCZN
24673,	39+CHK encode	24703,	128 C (obsolete)	24802	BCFIM
24680,	39 extended 24704,	128 C		24803	BCEANVELO
24681,	39 extended + CHK	24710,	UCC-128	24804	BCUPC128
24675,	Danish PTT 39	24720,	EAN 128	24810	BCCODE11
24676	French Postal 39 A/R			24811	BCCODE11_C
24770,	ZIP+4 POSTNET 5	24690,	93	24812	BCCODE11_CK
24771,	ZIP+4 POSTNET 9	24691,	93 extended	24805	BCKIX
24772,	ZIP+4 POSTNET 11				
23591,	USPS ZEBRA	24750,	CODABAR		
24644,	USPS 25, Tray Label	24751,	CODABAR +CHKmod16		
24645,	USPS 25, Sack Label				



parameter Esc(s#p

1 to 8:

defines the ECC level

1000 to 1400:

defines the ECC level based on the size of the codeword relative to the data size, in percent (0 to 400). The matching Ecc level will automatically be calculated.

parameter#1,#2,#3[#4]b

#1,

Maximum number of columns for the PDF symbol

#2,

Maximum number of lines for the PDF symbol

#3,

=1 #1 and #2 are the mandatory size for the PDF symbol
=0 or not specified: #1 and #2 are maximum size (default)

#4,

=1 The PDF-417 symbol is truncated on its right side
=0 The PDF-417 symbol is not truncated (default)

Example: 8 columns, 10 lines mandatory size, none truncated: 8,10,0

parameter#1,#2[#3,#4]s

Symbol format parameters

#1,

X parameter for the symbol X/Y size ratio (default: 2 for 2/3)

#2,

Y parameter for the symbol X/Y size ratio (default: 3 for 2/3)

#3,

Symbols black/white module height (1 to 10). Unit=minimum module width (default=3)

#4,

For future use

Example: square PDF, minimum module width: 1,1,1

T parameter24850T See previous slide



Example

<27>&fS

<27>&a5000h2000V

<27>&a90P

<27>(s4p102h40v10,20b10,20s24670T

BARCODEINFORMATION

<27>(0N<27>(sp10hsb4099T

<27>&aP

<27>&f1S

Push cursor position (save)

Positioning in 1/720 units per inch

Rotate 90 degrees*

Select barcode (3of9 ratio 1:2)

Barcode information

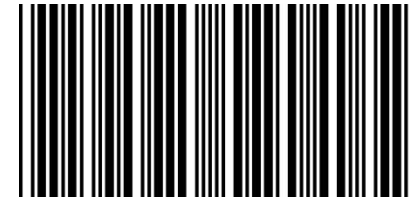
Select any font from PCL font list

Original printing direction*

Pop cursor position (restore)

<27> is Hex 1B or ASCII 27

Example with MS Word PCL 5 driver using the print field:



```
{PRINT 27 "&fS" 27 "&a5000h2000V" 27 "&a90P" 27
```

```
"(s4p102h40v10,20b10,20s24670T" BARCODEINFORMATION" 27 "(10U" 27
```

```
"(sp10hsb4099T" 27 "&aP" 27 "&f1S" \* MERGEFORMAT }
```

Minimum bar code definition



Example

Example with MS DOS EDIT:

```
←&fS←&a5000h2000V←&a90P←(s4p102h40v10,20b10,20s24670TBARCODEI  
NFORMATION←(10U←(sp10hsb4099T←&aP←&f1S
```

Esc: Strg+P Alt+27

copy /b filename \\PCName\PrinterShareName



SAP:

OSS note: #5196 lists standard R/3 bar code names

OSS note: #45643 lists PCL-5 command details for bar code attribute selection

SE73 transaction lists barcode names

SO10, SAPSCRIPT-BARCODETEST (client 000)

SPAD – select device types – add print control: Use in SAP script

For Unix/Linux printing via Pearlscrip see ELP documentation



Intelligent Bar code System

Tips



Kyocera emulation:

ELP is able to handle all PreScribe Bar code statements!
ELP handles more the 80 other PreScribe commands.

SAP (no bar code printed):

In 80% wrong device type (print-control not available)
In 15% client use windows driver printing SAP-WIN

User Data Error is printed with an X in bar code

See manual for error information

Never print data stream through a windows driver!



OMR codes for envelope machines



- Stielow / Neopost / Hefter / PFE
Pitney Bowes / Kern
- Automatic insertion detection
- Sequence control / Match codes
- Parity
- Postal optimization (Archive)
- Position, Lines free configurable
- Optional reverse [duplex] printing
- OMR BarDIMM Emulation

OMR codes for envelope machines



Rule assistant

Additional settings

Debugging Simplex/Duplex using preprinted forms

Job Ticketing

Job splitting

Project Accounting

OMR marks

Emulations with available setup menus

Printronix PGL Printronix VGL Epson 9 Nadel

Proprinter DS Kyocera Prescribe

Settings which are activated if the rule becomes true

Choose Section: GLOBAL 1 1

Formsmanagement and Printerhandling

Preview of data stream Job counter

Archiving

Accounting Protocol

Save Monitored Printing

eMail

Rule assistant for OMR marking

Manufacturer / Product: PitneyBowes Sequenz (Heffer SI 3300 / SI 3500)

Mark position in mm

From left pint margin: 2

From top pint margin: 200

print orientations of

In print direction 180°

90° 270°

Mark definition

Thickness: 7 Length: 0.5 Distance: 4.23

Further Optionen

User Parity mark Amount sequence control bits: 8

Sequence controle betw. jobs Max. Amount of inserted pages: 8

Pitney: Reverse counting for OMR code at right hand page

Include selective addon paper feeding option

Kern: Optional safety line

Method how insertion mark page is evaluated

Recoignizing a specific text only available on last/first page

If processing single jobs, then evaluate the last page via an own p:

Trigger sequence is already inserted / programmed in data stream

Search string for method

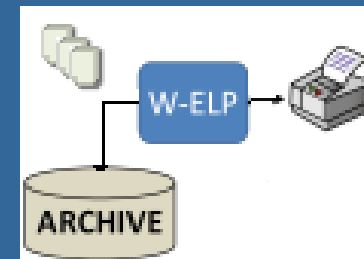
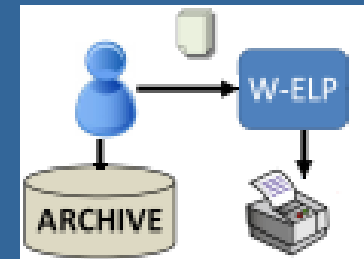
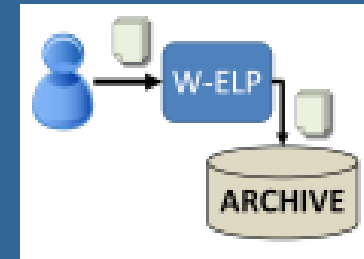
A sunset over the ocean with two kayakers in the foreground. The sky is filled with dramatic, dark clouds illuminated from below by the setting sun, creating a vibrant orange and yellow glow. The water is dark blue with gentle ripples. In the lower foreground, two kayakers are silhouetted against the water, paddling a small boat. The overall mood is serene and contemplative.

Basic Features: Archiving



- as PDF / PCL / or any other data stream format
- Index file possible
- Stored to project-, user- and or group-directory
- In / Outgoing streams
- Reprinting
 - Single jobs, booklets
 - Copies
- Postal optimization
 - Using collection variables as filenames

Archiving works with all kind of data stream formats, PDF conversion with PCL 5 and PCL 6!

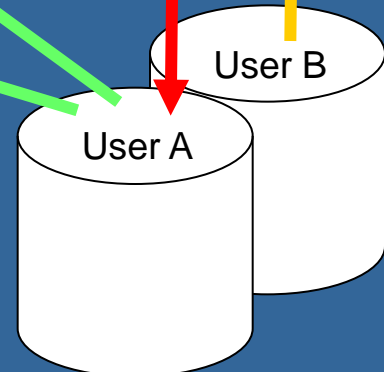
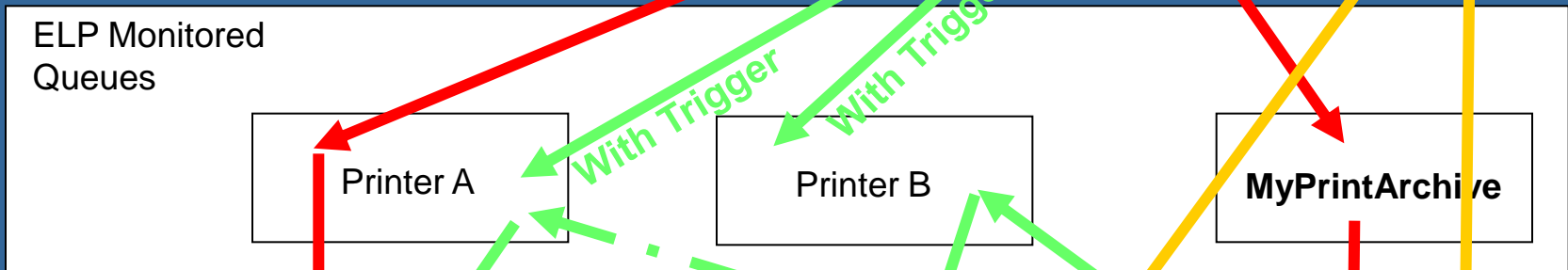




Collect4Printing



- Standard print job
- Sent all archived jobs
- Select/Reprint/Staple Jobs



Send / Distribute all archived jobs to any available printer.

Collect and sort data streams, e.g. User sorted

Collect4Printing Rule Settings



[Collect4Printing]

; All jobs are printed through this named queue to local port NULL

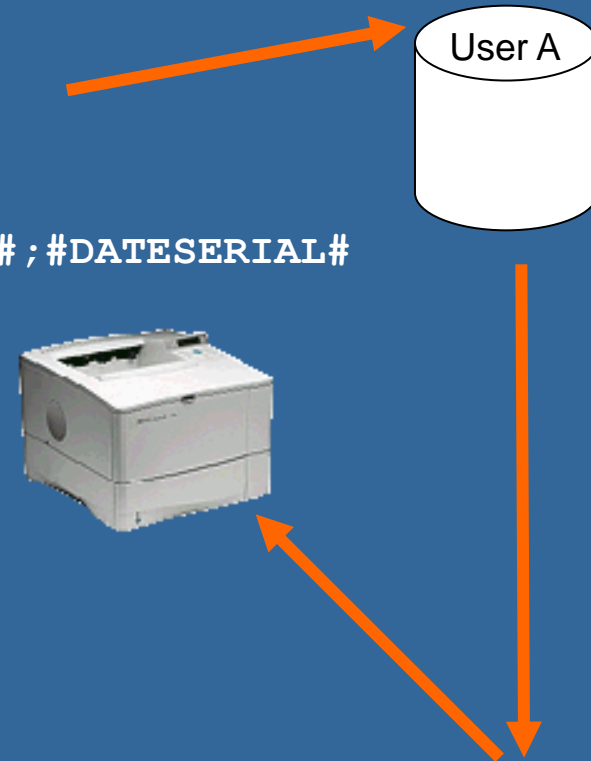
; Store file to archive directory, coding the user name and time

OutArchiveDir=#ELP_FORMS_PATH#archive\#USERNAME#;#DATESERIAL#

; If print files are older then 5 days erase them

ArchiveDays=5

Exit=ON



!PrintAll!

**Send
via
Batch file
to queue**

[Print all]

Trigger_Binary=!PrintAll!

; All stored jobs are inserted at actual jobs end

InsertPrintFilesAtJobEnd=#ELP_FORMS_PATH#archive\#USERNAME#*.*

; and the trigger job is not printed

KillJob=ON



Rule assistant

Additional settings

Debugging Simplex/Duplex using preprinted forms

Job Ticketing

Job splitting

Project Accounting

OMR marks

Emulations with available setup menus

Printronix PGL Printronix VGL Epson 9 Nadel

Proprinter DS Kyocera Prescribe

Settings which are activated if the rule becomes true

Choose Section: GLOBAL

Formmanagement and Printer handling

Preview of data stream Job counter

Archiving Accounting Protocol

Save Monitored Printing

Adds the OutArchiveDir keys for the selected section

Rule assistant for archiving

In section/rule ELPARCHIV

Archive mode

Incoming data stream Outgoing data stream

File type to archive

Only print data stream Only in Tiff,Jpg etc. Format

Only PDF format Tiff,Jpg etc. and PDF Format Tiff,Jpg, PDF and PCL Format

Print data stream and PDF Tiff,Jpg etc. and PCL Format

Archive directory

Optional values

Specific names for

Delete files after # days

Store only first copy (original) Postal optimization, append to existing archive file

Index file

Job splitting

Don't initialize new split stream

Every single page is separated Insert all fonts/macros/init. into all part jobs

Split command Escjs-997Z is already part of data stream

Always split after N pages:

Split before/after term

The search item is always on the first page

The search item is always on the last page

Erase search argument (if mode is less than 3 only)

Mark print data stream for printing through ELP

Create a signed PDF

In Directory

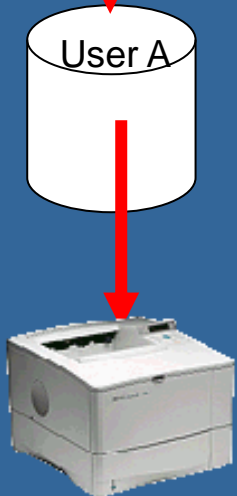
Out Directory

Delay in Milli sec.



Collect4Printing

- Collect Data streams
- Send them as one Job to any available printer
- staple them



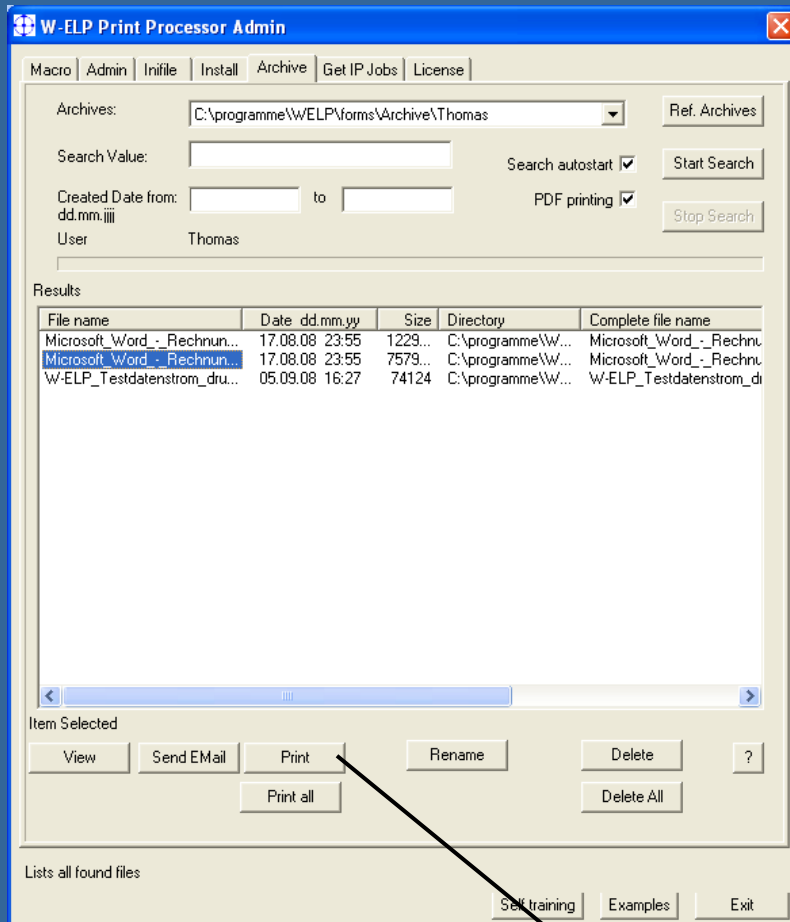
Print job splitting

- Separate big jobs into single documents
- Work load balancing
- Postal optimization

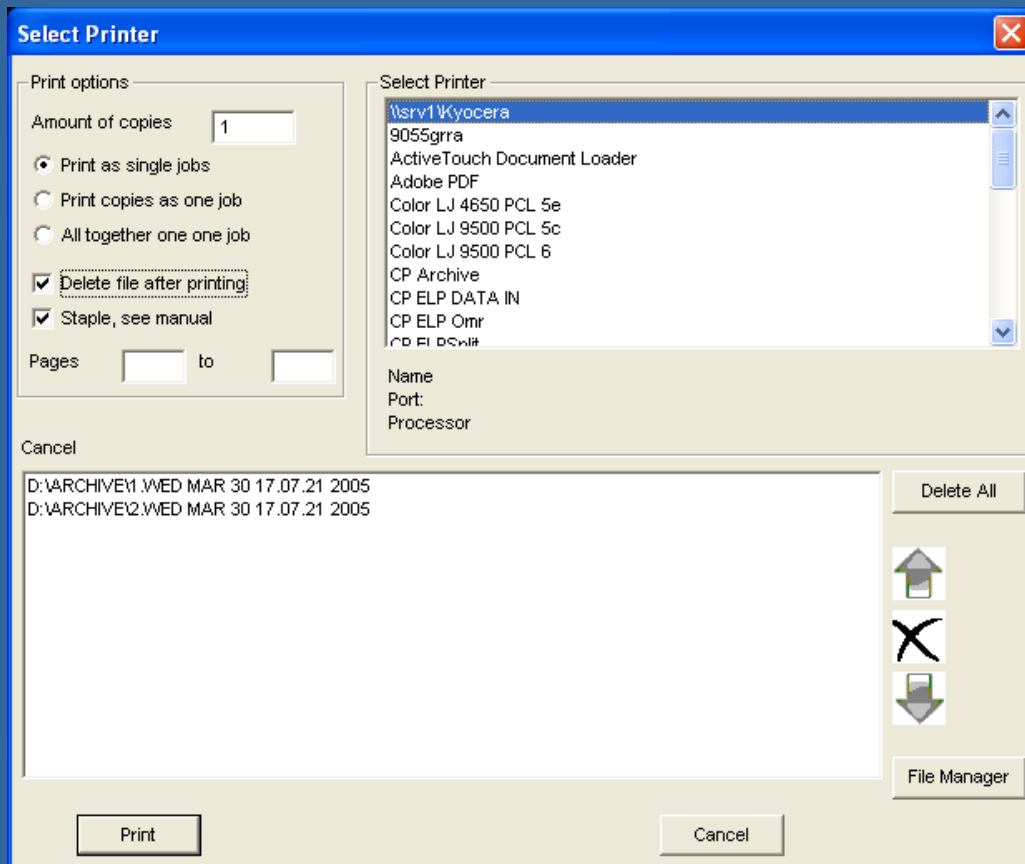
Insert stored data streams

attach data streams, data sheets
on the fly

Archiving: Search and View



- Access to all archives
- Stores the print data stream and / or PDF format
- smart search routines
- reprint, email, view function
- Collect and print jobs
- Optional: Delete jobs after X days.
- **Generate index files for professional archive systems**



- Sort collected print streams, booklets
- Drag & Drop new streams
- Select destination printer
- Staple, Delete printed jobs
- Reprints from to page
- User specific PPAAdmin with Archive tab only.

Create searchable PDF documents



Problem:

Modern Windows drivers don't encode readable text with a standard symbol set.

Solutions:

`ConvertSoftFont2ISO=ON`

When activated ELP tries to convert all TrueType font based texts from the Windows stream based coding, into ISO. As a result, the PDF converter creates searchable PDFs.

`RemoveDownLoadFont=ON`

Deletes the complete soffont information from the data stream and replaces it with definable printer internal fonts.

See online help for further details. (All ELP commands)

A sunset over the ocean with two kayakers in the foreground. The sky is filled with dramatic, dark clouds illuminated from below by the setting sun, creating a vibrant orange and yellow glow. The water is dark blue with gentle ripples. In the lower foreground, two kayakers are silhouetted against the water, paddling a small boat. The text "Advanced Features: Digital Signature" is overlaid in the center of the image in a bright yellow font.

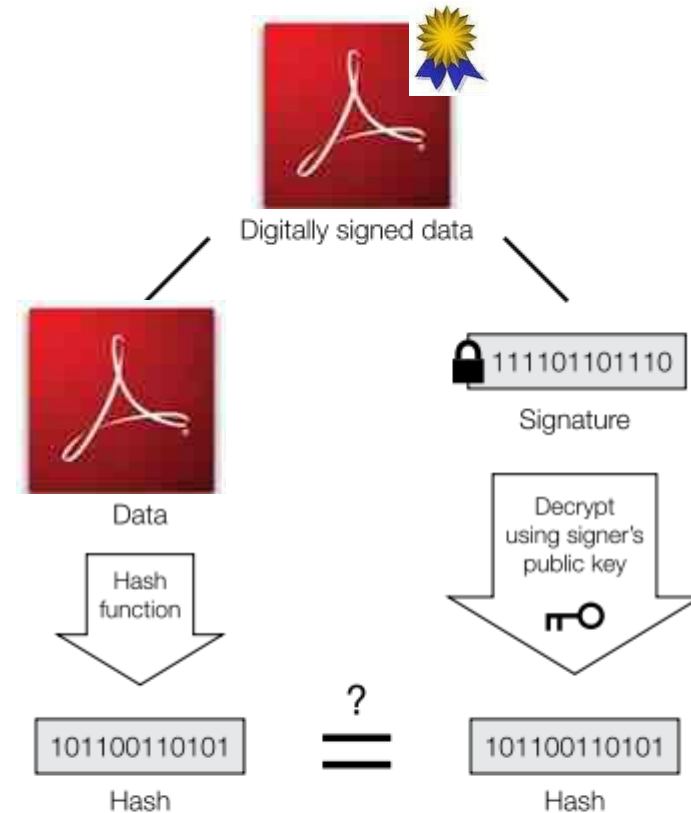
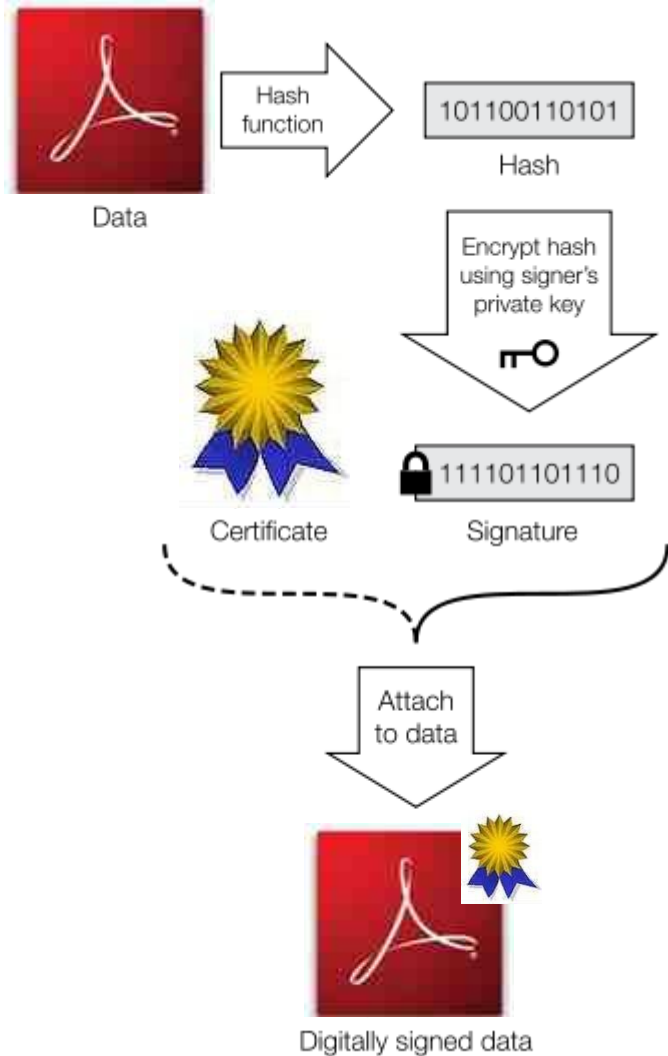
Advanced Features: Digital Signature



- Digital signatures are often used to implement electronic signatures
- In the European Union, electronic signatures have legal significance
- W-ELP supports software certificates (PKCS#12) and various SmartCard manufactures
- Depending on the local law and the level of security needed the proper signing method has to be chosen
- SmartCards do need of course a suitable reader



Signing (W-ELP) Verification



If the hashes are equal, the signature is valid.



Rule Assistant

Set Archive

Rule assistant for archiving ✕

In section/rule GLOBAL New rule/section

Archive mode
 Incoming data stream Outgoing data stream

File type to archive
 Only print data stream Tiff.jpg etc. and PDF Format
 Only PDF format Tiff.jpg etc. and PCL Format
 Print data stream and PDF Tiff.jpg, PDF and PCL Format
 Only in Tiff.jpg etc. Format

Archive directory
#ELP_FORMS_PATH#Archive#USERNAME#

Optional values
Specific names for archive files
#PRINTDOCNAME#_#DATESERIAL#

Delete files after # days

Store only first copy (original)

Postal optimisation, append to existing archive file

Index file Browse...

Create a signed PDF

In Directory

Out Directory

Delay in Milli sec.

OK Cancel

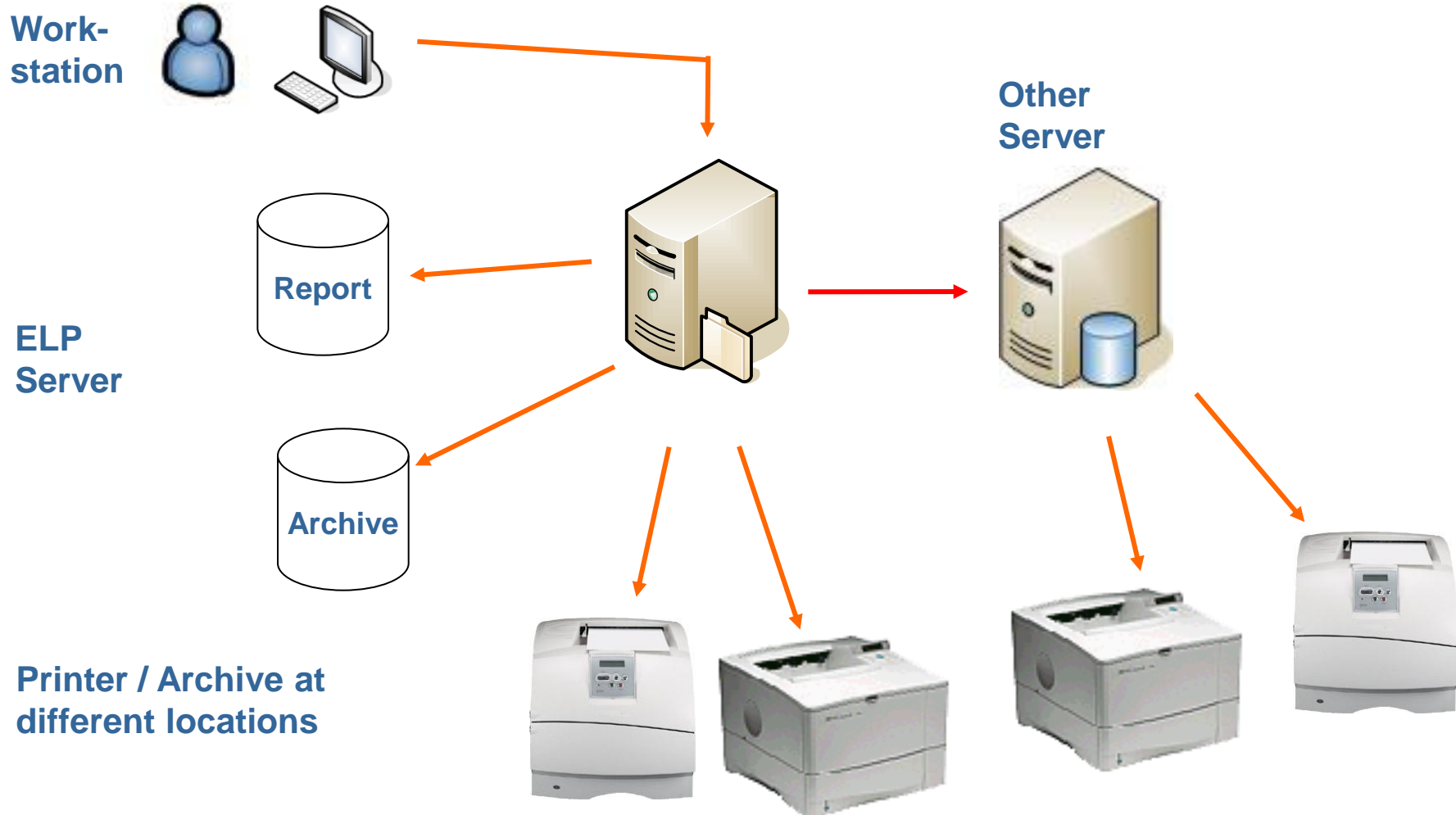


Digital Signatures with W-ELP

- W-ELP signs PDF's – so the PDF Generator and Windows is a pre-requisite
- Currently only 32 Bit Windows is supported
- 30 day trial version with a revoked Software certificate available on request (so not bundled with the “normal” standard download)
- If a SmartCard certificate has to be extracted and used please contact stethos **BEFORE** starting the project if the type of SmartCard is supported
- Usage: e.g. legal electronic invoices or archiving purpose

A dramatic sunset over the ocean. The sky is filled with dark, heavy clouds, with a bright orange and yellow glow from the setting sun breaking through near the horizon. The water is dark blue with gentle ripples. In the lower foreground, a person is silhouetted while kayaking, holding a paddle. The overall mood is serene and contemplative.

Advanced Features: Distributed Printing





Additional copy on different printer

If needed add a new printer queue and share it

ELPARCHIV Properties

General Sharing Ports Advanced Security Device Settings Info

You can share this printer with other users on your network. To enable sharing for this printer, click Share this printer. Windows Firewall is already configured to allow the sharing of printers with other computers on the network.

Do not share this printer

Share this printer

Share name: ELPARCHIV

List in the directory

Drivers

If this printer is shared with users running different versions of Windows, you may want to install additional drivers, so that the users do not have to find the print driver when they connect to the shared printer.

Additional Drivers...

OK Cancel Apply

W-ELP Print Processor Admin

Macro Admin Configuration Install Archive Get IP Jobs License

- GLOBAL
 - TriggerExample
 - REM
 - Search_Windows
 - Erase_Binary
 - ELP Command
 - Printer Settings
 - ELP activated printers
 - GF eMail research

Rule assistant

New rule/section

Add key to rule

Delete

Modify

Turn ON/OFF

Store to FSA Device

Open .ini file

Add Key

- [VARIABLES keys]
- [ACCOUNTING keys]
- [ARCHIVING keys]
- [JOB DISTRIBUTION keys]
 - Call
 - CallAtNextFormFeed
 - CallAtStartUp
 - CallNoPrint
 - CallReadBack
 - Distribute_Section
 - FileSize
 - InPort
 - OutPort
 - PageCount

Description:

Enter any reachable port, where the incoming data should be sent

Add key Close

Modify the key value

Modify the key value

Section ELP Invoice

Key InPort

Old value \\server\Releasename

New value \\MyServer\Book

Key Description

Enter any reachable port, where the incoming data should be sent

Apply Cancel Show Macros Generator ?

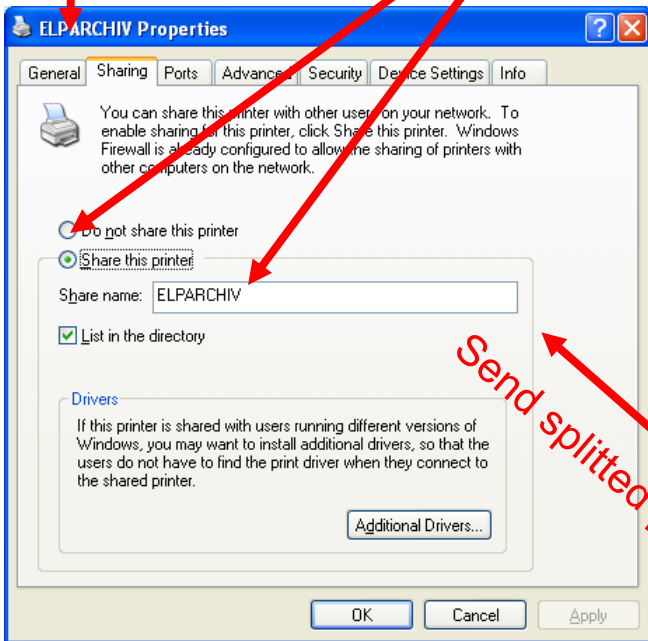
\\#HOSTNAME#Sharename



Split [Mail merge] Jobs

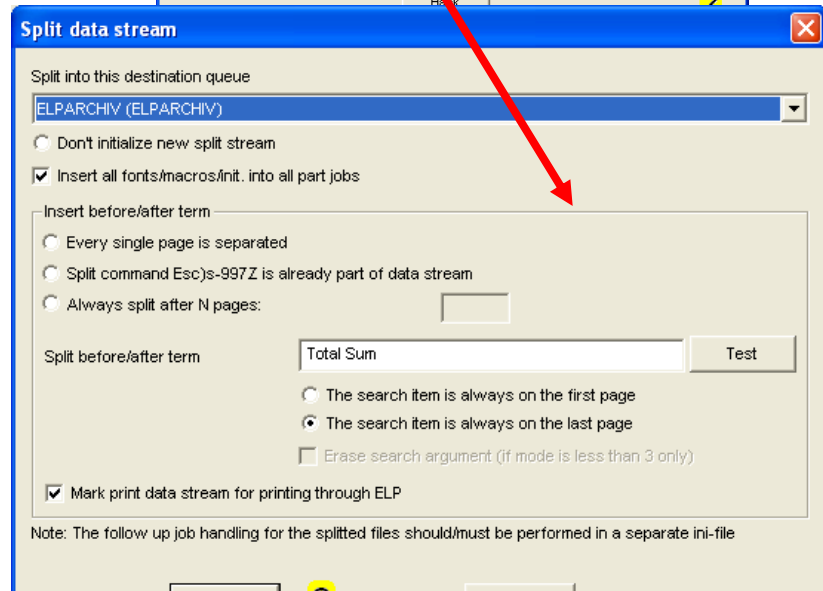
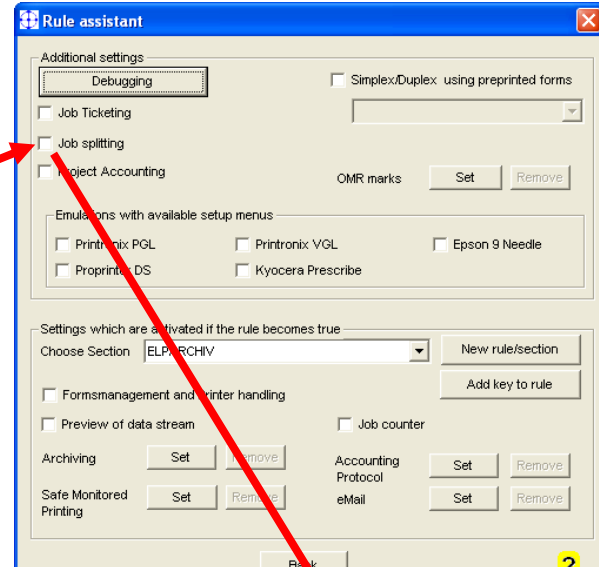


If needed add a new printer and share it



Send splitted parts to this queue

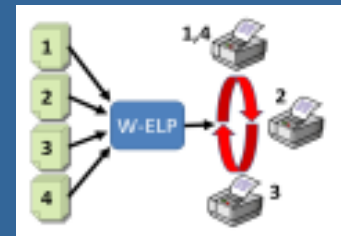
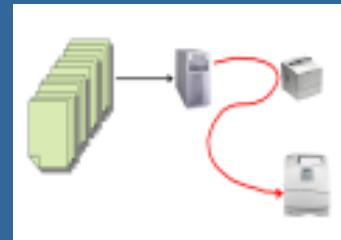
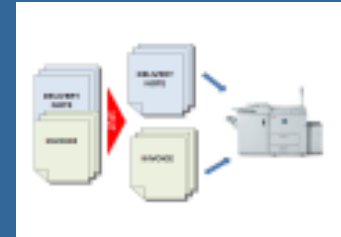
Create an own rule for this queue





Split files according:

- Big stream into single jobs
- File Size
- Amount of Pages
Desk / Dept. / Print Center
- Work load balancing



Job Distribution Examples



[Ricoh Aficio SPC 420dn]

DISTRIBUTE_SECTION=SmallPrinter

[Kyocera FS-2000]

DISTRIBUTE_SECTION=MediumPrinter

[SmallPrinter]

Distribute_FileSize=4000000,\\Servername\PrinterShareName1

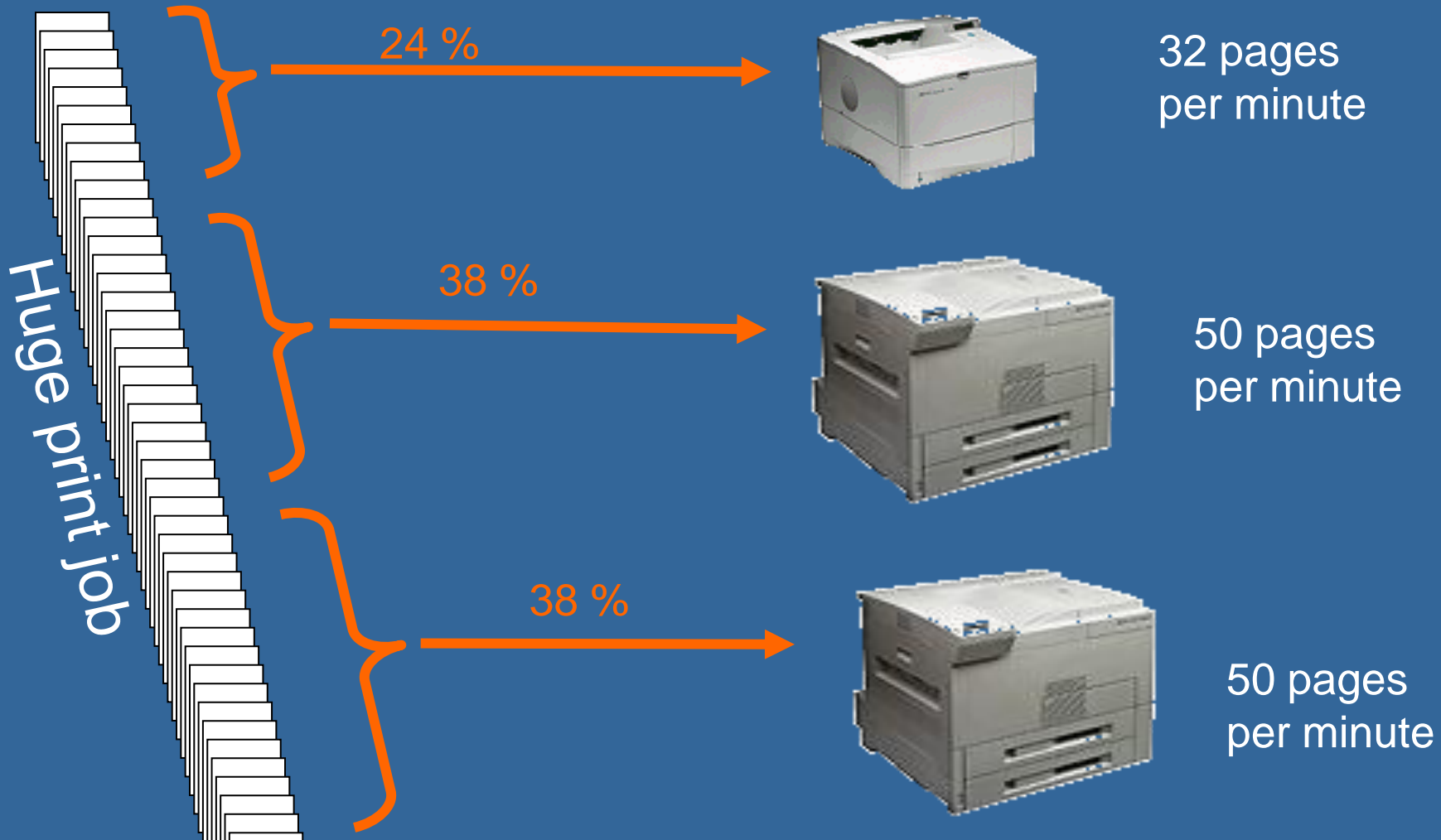
Distribute_FileSize=2000000,\\Servername\PrinterShareName2

[MediumPrinter]

Distribute_PageCount=50,\\Servername\PrinterShareName1

Distribute_PageCount=200,\\Servername\PrinterShareName2

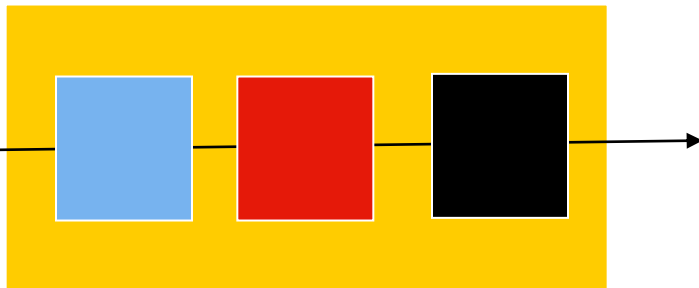




Store private jobs on printer HDD



ELP



User pulls his documents from the printer harddisk with his pin number

Any Application on any System (Host)

1. Gets User Name
2. Gets User PIN from ELP Database
3. Inserts the private PIN command

Question:
Why just only user-sorted?
Tour numbers? Region codes?
Any other criteria which can be found in the data stream...

A dramatic sunset over the ocean. The sky is filled with dark, heavy clouds, with a bright orange and yellow glow from the setting sun breaking through near the horizon. In the foreground, two people are silhouetted in a kayak on the water, with one person holding a paddle. The water is dark and reflects the colors of the sky.

Advanced Features: Reporting and Accounting

Reporting and Accounting „light“



Windows

Spooler

UNIX

Command line

Data stream analyses

Project Accounting

ELP - VM
Variables
Management

Active Directory

From external Variable files any Software

Data Base

Microsoft Excel - ACC_FILE

	A	B	C	D	E	F	G	H	I	J	K	L
1	UserName	DocumentName	NumPages	Language	PageSize	Orientation	Resolution	Duplex	PrinterName	MachineName	Date	Time
2	Thomas	MS Word, Invoice	8	PCL	26	0	600	0	OBTHOMASXP	MachineNAME	10.09.2002	12:34:54
3	Thomas	MS Word, Delivery	2	PCL	25	0	600	0	OBTHOMASXP	MachineNAME	10.09.2002	12:35:04

File formats
DBase or
CSV



Reporting and Accounting „light“

Each job generates one record into any associated reporting data base.

Every DB can hold any collectible data.

Report file:

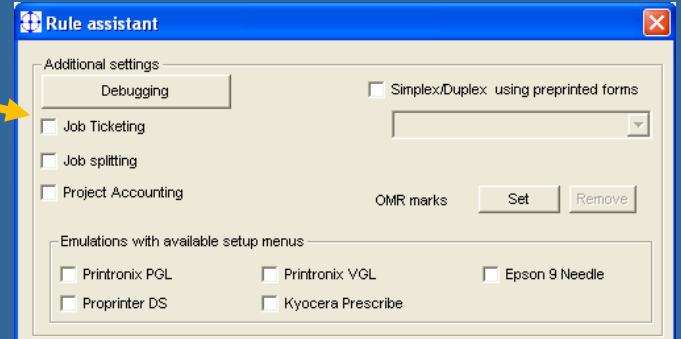
	A	B	C	D	E	F	G	H	I	J
1	UserName	DocumentName	NumPages	Language	PageSize	Orientation	Resolution	Duplex	PrinterName	Machin
2	Thomas	MS Word, Invoice	8	PCL	26	0	600	0	OBTTHOMASXP	Machin
3	Thomas	MS Word, Delivery	2	PCL	25	0	600	0	OBTTHOMASXP	Machin

stethos[®] Cost or project tracking



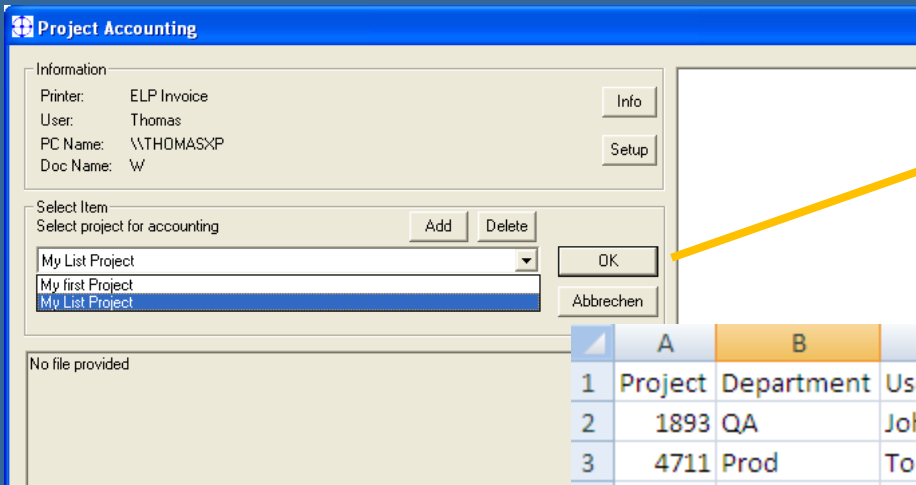
Activation

1



Drucken
 Einen Drucker, die Anzahl der Exemplare und andere Druckoptionen vor dem Drucken auswählen.

2 Dialog opens for each job



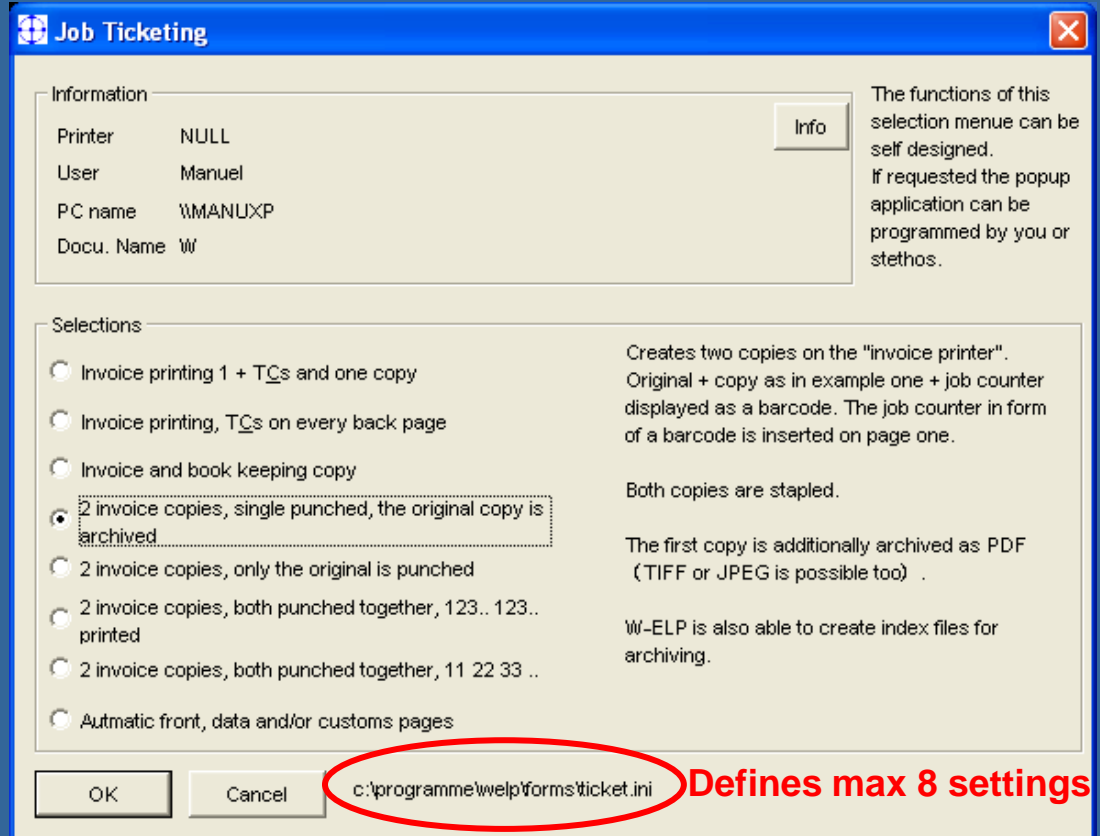
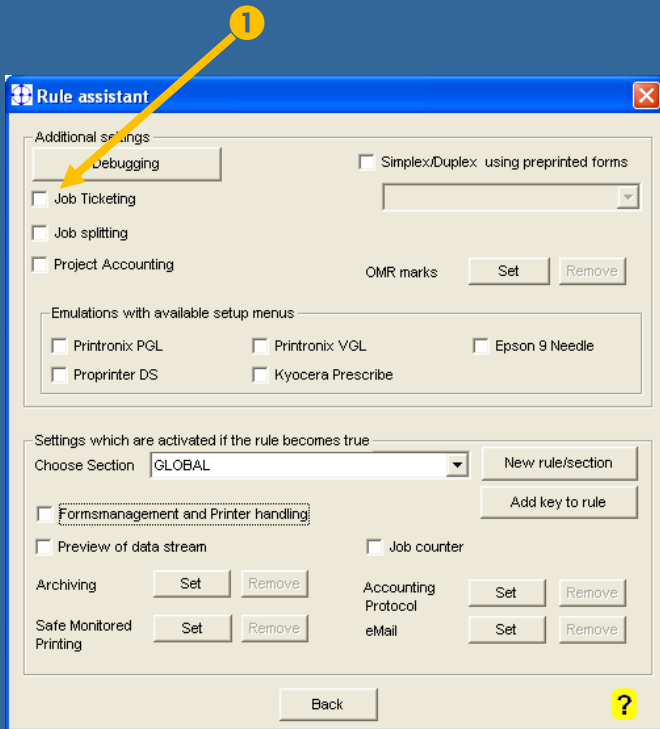
3

Accounting file is created

	A	B	C	D	E	F	G	H
1	Project	Department	UserName	DocumentName	NumPages	Language	PageSize	Duplex
2	1893	QA	John Doe	MS Word - Invoice A	3	PCL	26	0
3	4711	Prod	Tony Montana	MS Word - Invoice B	5	PCL	26	1
4	1846	Marketing	John McLane	MS Word - Invoice C	4	PCL	25	1
5	8015	RnD	Walter Sobchak	MS Word - Note	2	PCL	26	1



② Apply for job a print setting:
E.g. Watermarks on copies, stapling, punching



A dramatic sunset over the ocean. The sky is filled with dark, heavy clouds, with a bright orange and yellow glow from the setting sun breaking through near the horizon. In the foreground, two people are silhouetted against the water, paddling a kayak. The water is dark blue with gentle ripples. The overall mood is serene and adventurous.

Advanced Features: E-mail



- e-mail addresses
 - Predefined
 - collected in data stream (e-mail)
 - searched in data base
 - from Active Directory

- e-mail body text (only e-mail)
 - selectable according to data stream,
 - variables personalize the document

- Attachment
 - Data stream
 - Job as PDF, PDF/A, signed PDF or TIFF
 - T&Cs, data sheets etc.



Rule assistant 1

Additional settings

Debugging Simplex/Duplex using preprinted forms

Job Ticketing

Job splitting

Project Accounting OMR marks

Emulations with available setup menus

Printronix PGL Printronix VGL Epson 9 Nadel

Proprinter DS Kyocera Prescribe

Settings which are activated if the rule becomes true

Choose Section GLOBAL 2 2

Formsmangement and Printerhandling

Preview of data stream Job counter

Archiving Accounting Protocol

Save Monitored Printing eMail 3

Adds the accounting keys for

Rule assistant for sending E-Mails ✕

Optional static E-Mail address To

CC

Text for subject row

File name for attachment

Additional BLAT arguments

Body text file name out of WELP/Forms directory

Optional: Protocol E-Mail sending into log file

Only data stream Document send as PDF Document send as TIF

PDF converter arguments

TIFF converter arguments

Create a signed PDF

In Directory

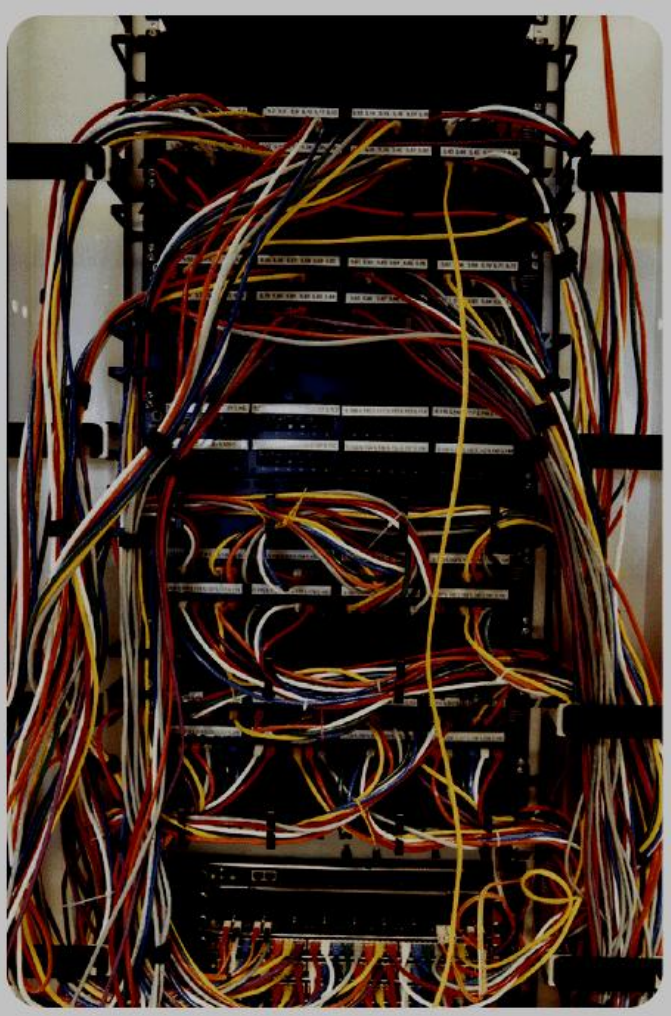
Out Directory

Delay in Milli sec.

?

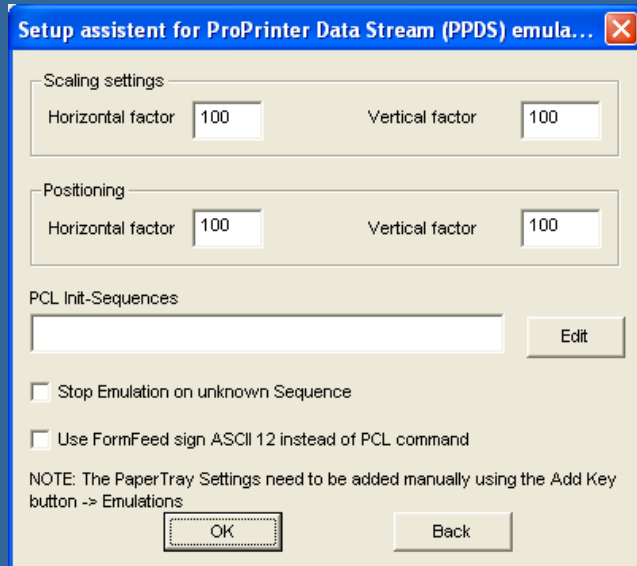
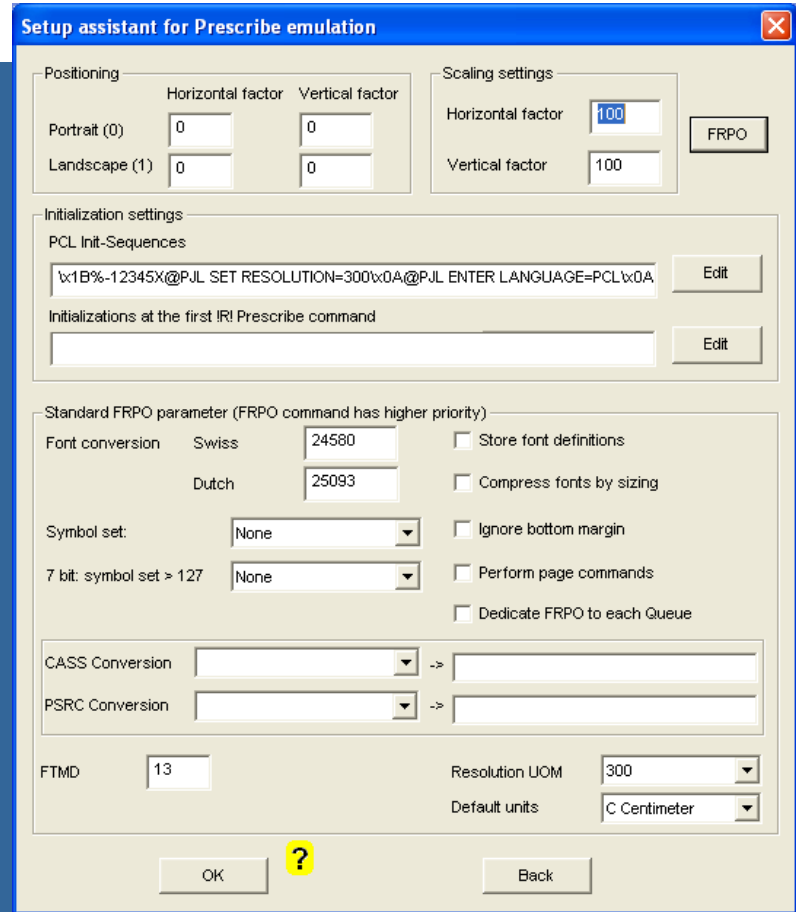
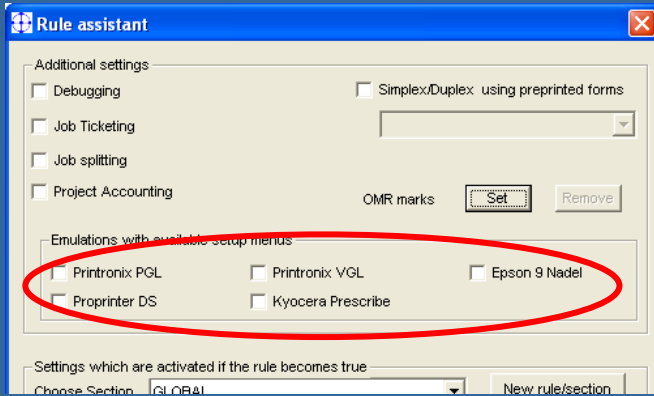


Advanced Features: Emulations & other solutions



- PDF Direct
- ASCII Output (Erase PCL)

- Kyocera PreScribe
- EPSON FX 100
- Printronix PGL
- Printronix VGL
- Hex dump
- PCL scaling
- PPDS
- Philips emulation
- CALS
- Postscript
- Tiff/Gif
- Search and Replace!

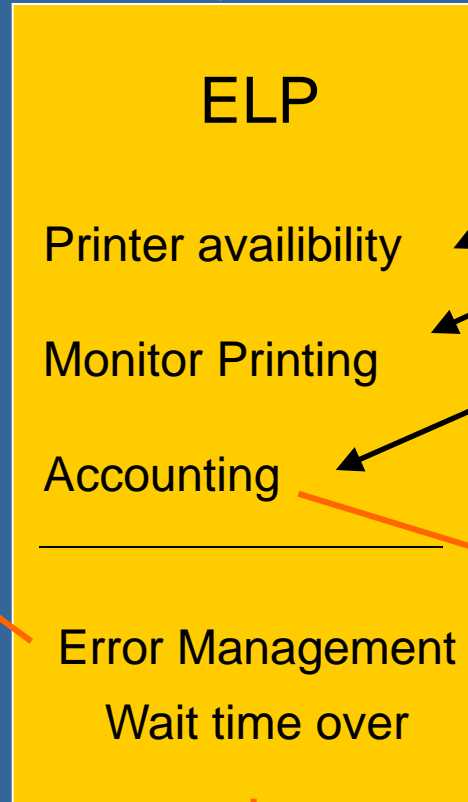


2 examples for emulation settings

stethos® Safe Monitored Printing



prints



IP / printing

SNMP verification



Reprint

- total
- collect jobs
- pages from/to

Notification
Wait time



Other functions

stethos® Safe Monitored Printing



Rule assistant

Additional settings

Debugging Simplex/Duplex using preprinted forms

Job Ticketing

Job splitting

Project Accounting

Emulations with available setup menus

Printronix PGL Printronix VGL Epson 9 Needle

Proprinter DS Kyocera Prescribe

Settings which are activated if the rule becomes true

Choose Section GLOBAL

Formsmanagement and Printer handling

Preview of data stream Job counter

Archiving

Safe Monitored Printing

Accounting Protocol

eMail

Safe Monitored Printing

Wait time in seconds

On existing error before printer starts 60 Ignore printer warnings as for example 'Toner low' or 'Paper low'

When printer error appears while printing 240

Communication way on error

Net send message to the print job owner

fix E-Mail address[es]

Action after the wait time passed and the problem was not fixed

When connection to the printer is lost (power off / network problems) continue printing after the waiting time via Windows queue. In this case, the job can be canceled.

Archive to

Move to printer Don't move job

Delete the job

Action performed after job was printed successfully

Net send message to the print job owner

fix E-Mail address[es]

Subject: Examples

Body: Examples

General eMail settings

Enable email protocol After error no further eMail for X minutes

Needed MIB addresses

Device state 1,3,6,1,2,1,25,3,2,1,5,1

Total page counter 1,3,6,1,2,1,43,10,2,1,4,1,1

Total duplex counter 1,3,6,1,4,1,11,2,3,9,4,2,1,4,1,2,22,0

Total color counter 1,3,6,1,4,1,11,2,3,9,4,2,1,4,1,2,7,0

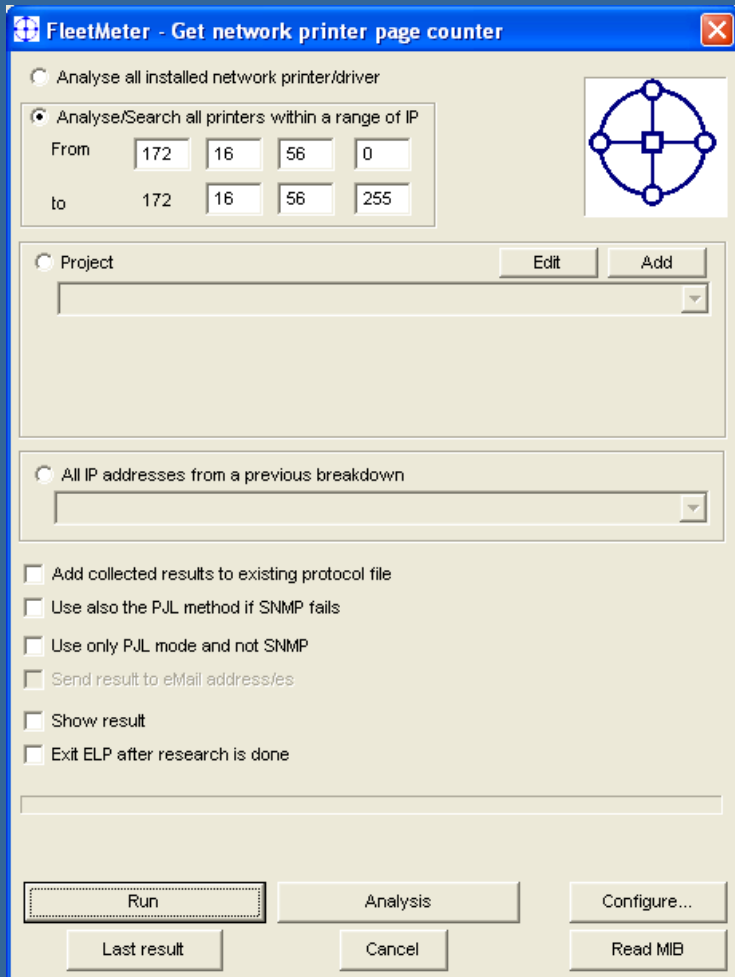
Printing state 1,3,6,1,2,1,25,3,5,1,1,1

Sleep mode 1,3,6,1,4,1,11,2,3,9,4,2,1,1,1,2,0

Other functions

FleetMeter

Tracking & Reporting



- ❖ Freeware after the first license
- ❖ Available as standalone application on USB key -> portable
- ❖ Reads complete MIB if needed
- ❖ Fully customizable
- ❖ Sends results periodically as e-mail
- ❖ No add-on charges
- ❖ CCT: Counter Calculation Tool is free as well

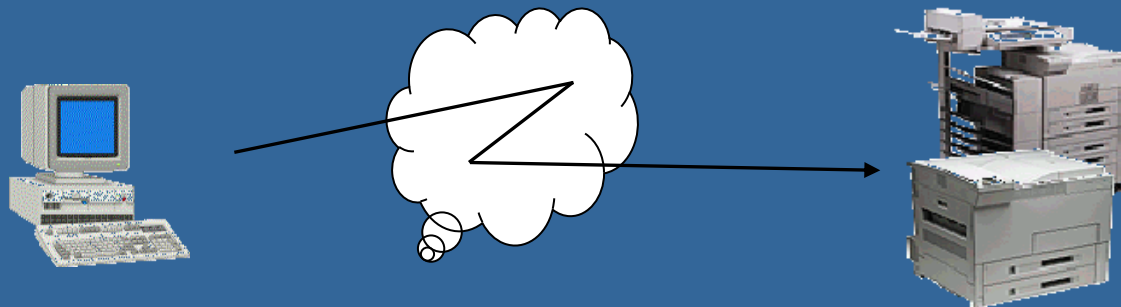
Date	Time	IP-Address	Manufacturer name	Serial number	PageCount	Duplex	Color
22.07.2005	11:07:31	172.17.35.1	hp color LaserJet 4600	JPAFF06592	48756	4355	32871
22.07.2005	11:07:31	172.17.35.2	NRG D422/2822/3222		258220	0	0
22.07.2005	11:07:39	172.17.35.5	HP LaserJet 1200	CNC2025296	4459	0	0
22.07.2005	11:07:43	172.17.35.7	hp color LaserJet 4600	JPAFC05633	146367	14	111154
22.07.2005	11:07:44	172.17.35.9	HP LaserJet 4050 Series	NL7Q047241	110422	0	0
22.07.2005	11:08:00	172.17.35.14	hp color LaserJet 4600	JPAFB04161	11935	0	10085
22.07.2005	11:08:00	172.17.35.15	hp LaserJet 4200	CNCX606165	21057	0	0
22.07.2005	11:08:12	172.17.35.19	HP LaserJet 5100 Series	CNBG105159	17670	0	0
22.07.2005	11:08:12	172.17.35.20	HP BUSINESS INKJET 2280	MY26EF14MF23	783	0	0
22.07.2005	11:08:16	172.17.35.25	HP BUSINESS INKJET 2280	MY26FF14BR28	1555	0	0
22.07.2005	11:08:24	172.17.35.28	HP BUSINESS INKJET 2280	MY26HE14JN23	2180	0	0

Encryption and Compression



Encrypting data streams makes printing via un-save lines very save.
Every printer may have his own keys.

Encryption_Keys=1234 12345 4321 56543



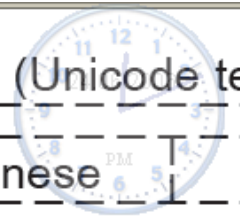
To save band with ELP can also compress the data stream up to 50%.

stethos® Unicode / Asian Printing on every PCL5 capable device

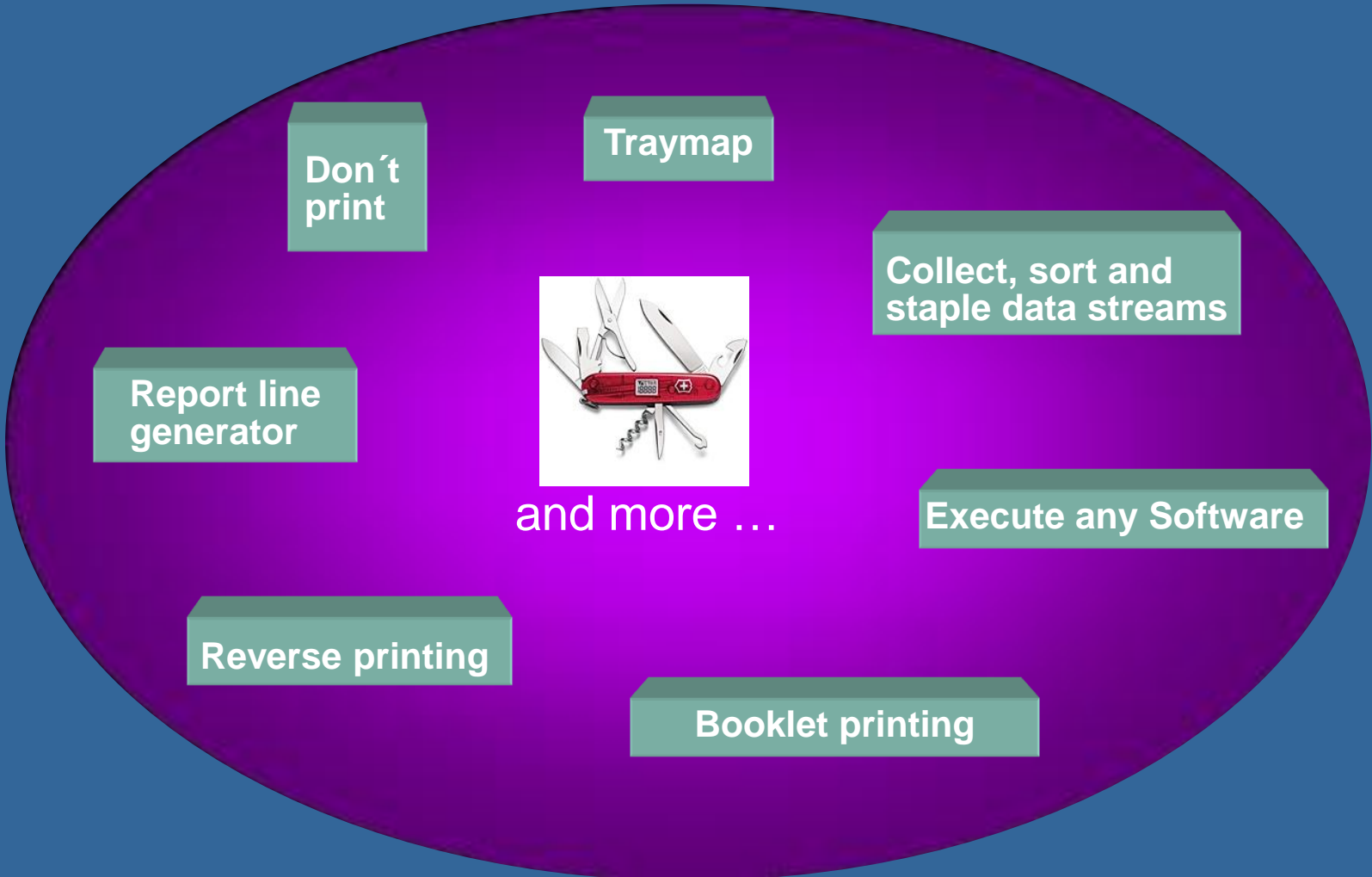


24.09.2003

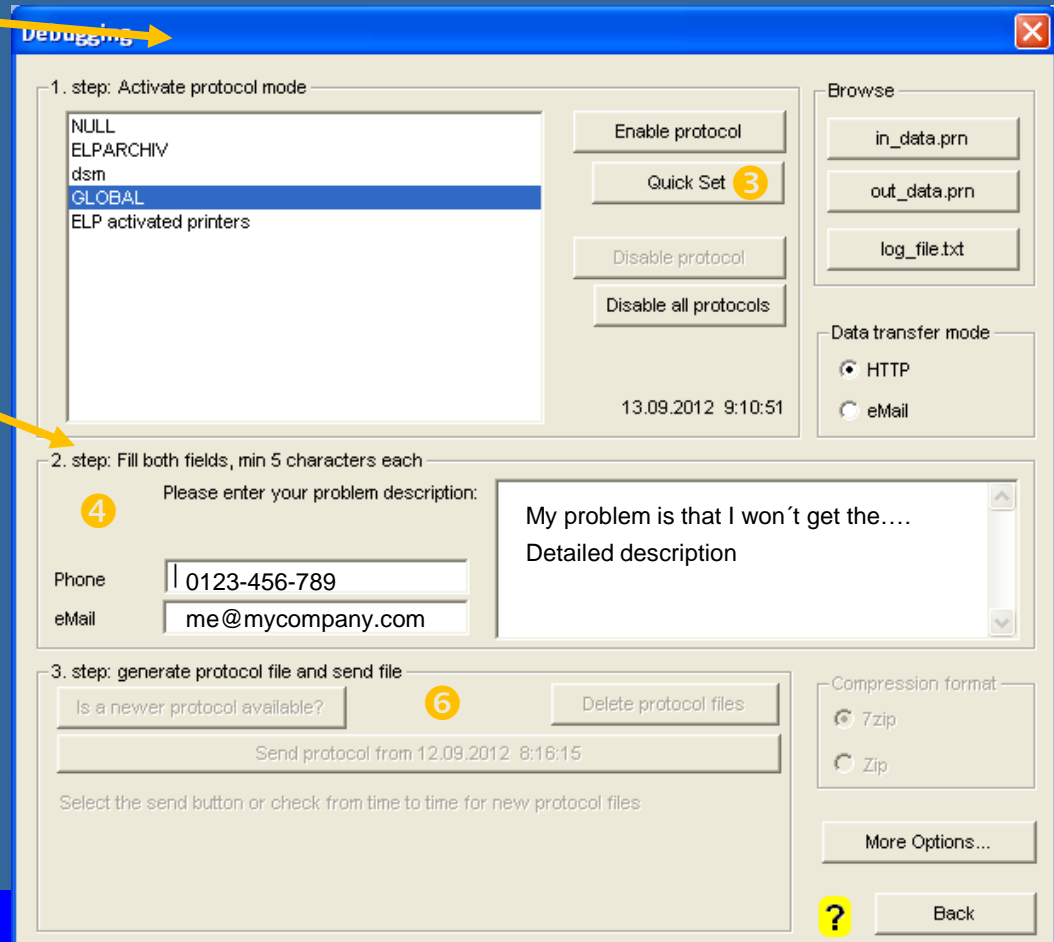
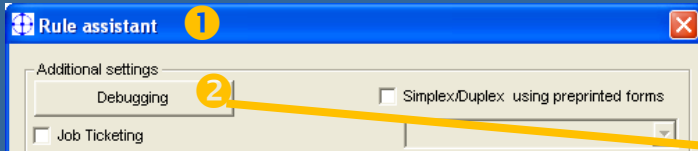
Print List/SAPscript in many languages (Unicode te



Language ZH = Chinese	#	In native language this is Chinese	
这是中国文本与特别汉字。			
10 20 30 40 50 60 70 80 90 100			
Language TH = Thai	#	In native language this is Thai	#
นี่คือข้อความไทยมีอักษรไทยพิเศษ.			
10 20 30 40 50 60 70 80 90 100			
Language KO = Korean	#	In native language this is Korean	
이것은 Hangul 특성에 한국 원본 이다.			
10 20 30 40 50 60 70 80 90 100			
Language CS = Czech	#	In native language this is Czech	
Tato js jeden Čech citát s nějaký zvláštní Čech osoby: ůúéíáýžřčšě			
10 20 30 40 50 60 70 80 90 100			
Language DE = German	#	In native language this is Deutsch	
Dies ist ein deutscher Text mit gängigen Umlauten: äöüß.			
10 20 30 40 50 60 70 80 90 100			
Language EN = English	#	In native language this is English	
This is an English text without special characters.			
10 20 30 40 50 60 70 80 90 100			



Support and error handling



Set debug protocol

Fill in the contact data

Start Print Job **5**

Check if ELP stored your print files, send the collected information to your support address.

Other functions

? Back

A dramatic sunset over the ocean. The sky is filled with dark, heavy clouds, with a bright orange and yellow glow from the setting sun breaking through near the horizon. The water is dark blue with gentle ripples. In the lower foreground, two kayakers are silhouetted against the water, paddling a small boat. The text "Wrap up" is centered in the middle of the image in a bright yellow font.

Wrap up


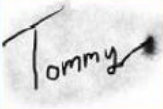






http://welp.stethos.com/e_overview.html

Rules




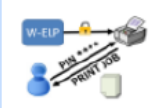


	Global
	User
	Queue / Printer
	Driver
	Search content
	Trigger information
	Writing out

Forms & Printer Functions

	Watermarks
	Signatures overlay
	Forms overlay
	Forms insertion
	Copies
	Printer functions

	Stapling Hole punching Folding
	Duplexing
	Color management
	Tray management


Security


	Monitored Printing
	Encryption
	Data stream compression ZIP UNZIP
	Mailbox / PIN printing PIN *** PRINT JOB
	Forms with date / time / user name
	Accounting and reporting DATABASE





http://welp.stethos.com/e_overview.html

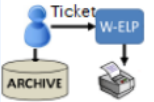
Archiving


- 

Classic archiving
- 

MyPrintArchive
- 

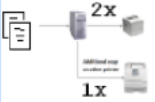
Collect4Print
- 


Archiving with index files
- 

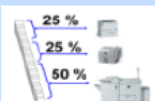
Apply a ticket for printing
- 

View and eMail jobs


Job Distribution

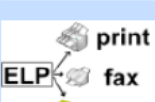
- 

Print job Distribution
- 

Forwarding / Rerouting
- 


Workload Balancing
- 

Workload Job Rotation
- 


Job splitting for forms / archiving
- 

E-mail and fax Connectivity


Bar codes, OCR, OMR, MICR

- 

bar codes


Bar codes 1D
- 

Bar codes

Bar codes 2D
- 


OMR marks


OMR mark
- OCR-A abc 123
OCR-B abc 123


OCR A and B
- 

Micr / CMC 7

Ticketing

- 

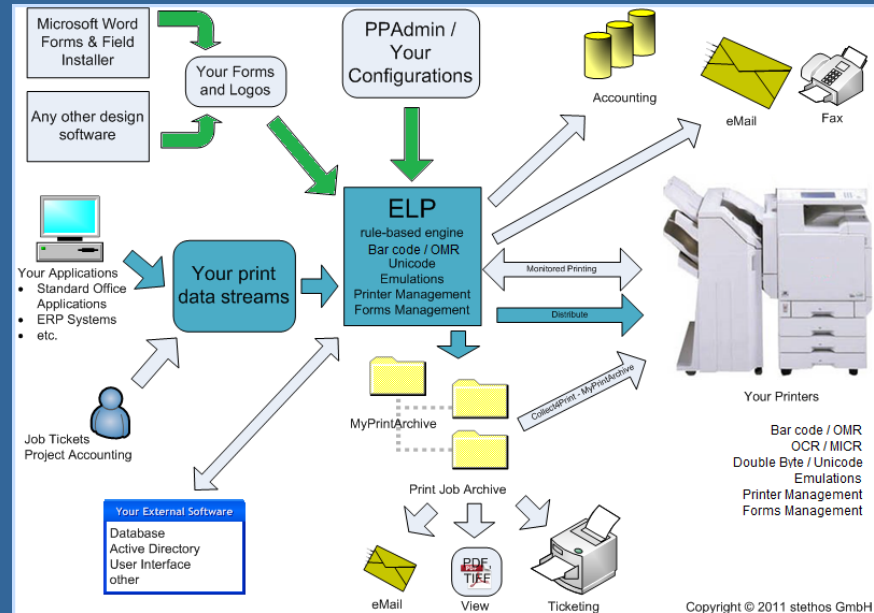
Real job ticketing
- 

Project accounting
- 

ELP_Command generator



10 minutes
product video



Click on any item
to get more information

Even more...



Yes, there are
much more
functions...

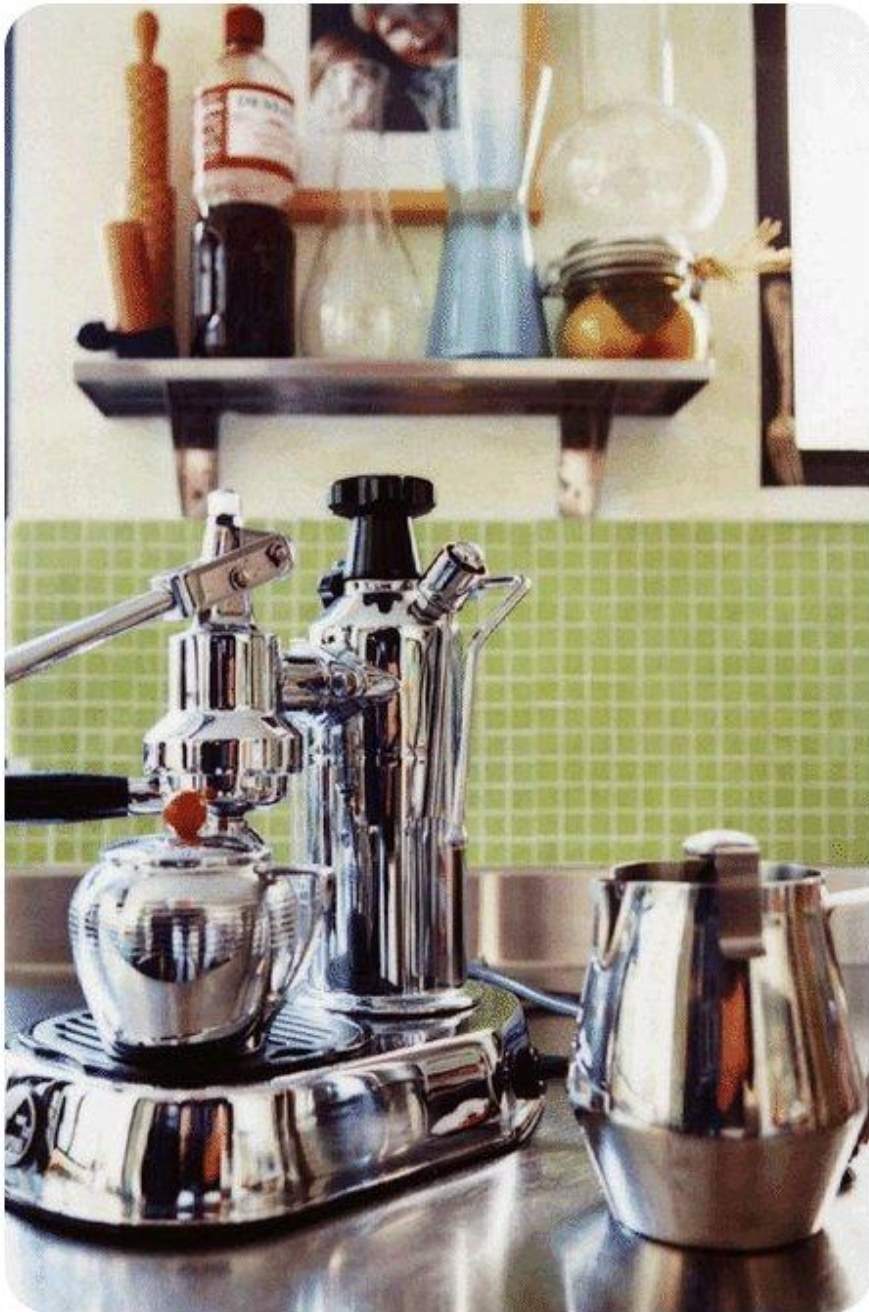
and think

what ELP can do for you?

If

You combine all
FUNCTIONS!





Who shows
competence
in [printer] solutions
generates
confidence
at the customer.

W-ELP

then you know it works!