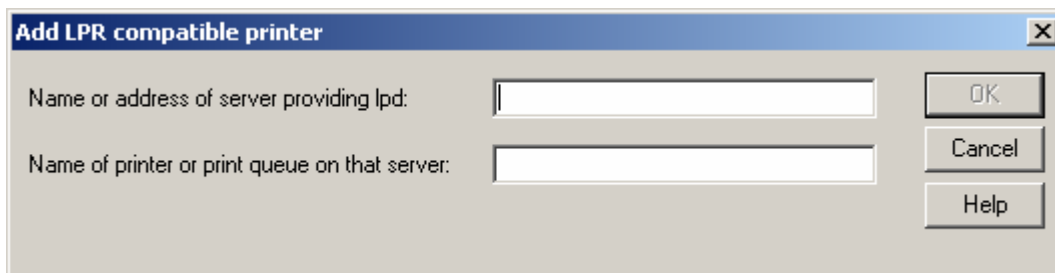


Local tracking without MPS (MegaTrack Print Server) module installed

A local printer is declared using LPT1 port and shared on the end-user machine.

If the end-user workstation is running under Windows NT4.0 or 2000, proceed as follows:

1. On the end-user PC and on the Print Server:
 - install LPR port monitor and start the TCP/IP printing service
 - select automatic startup in the Service window
2. On the Print Server:
 - declare a new local printer using LPR port
 - input the end-user machine name in “*Name or address of server providing lpd:*”
 - input the printer share name in “*Name of printer or print queue on that server:*”

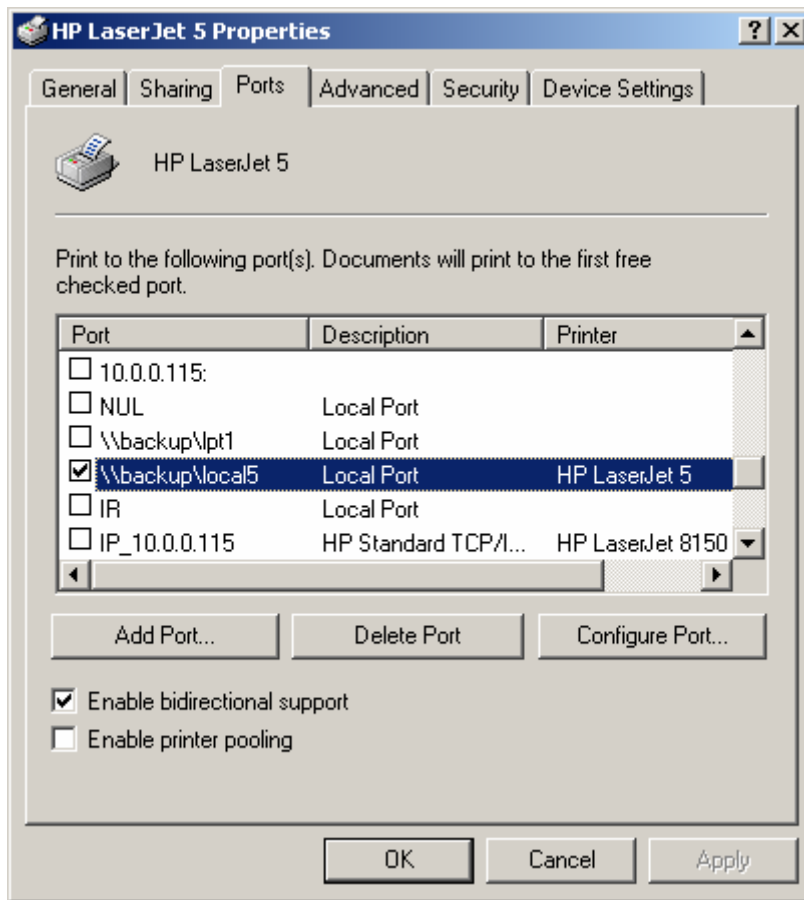


- share this new printer on the Print Server
3. On the end-user PC:
 - declare this printer as a network printer \\servername\sharename

If the end-user workstation is running under Windows 95 or 98, proceed as follows:

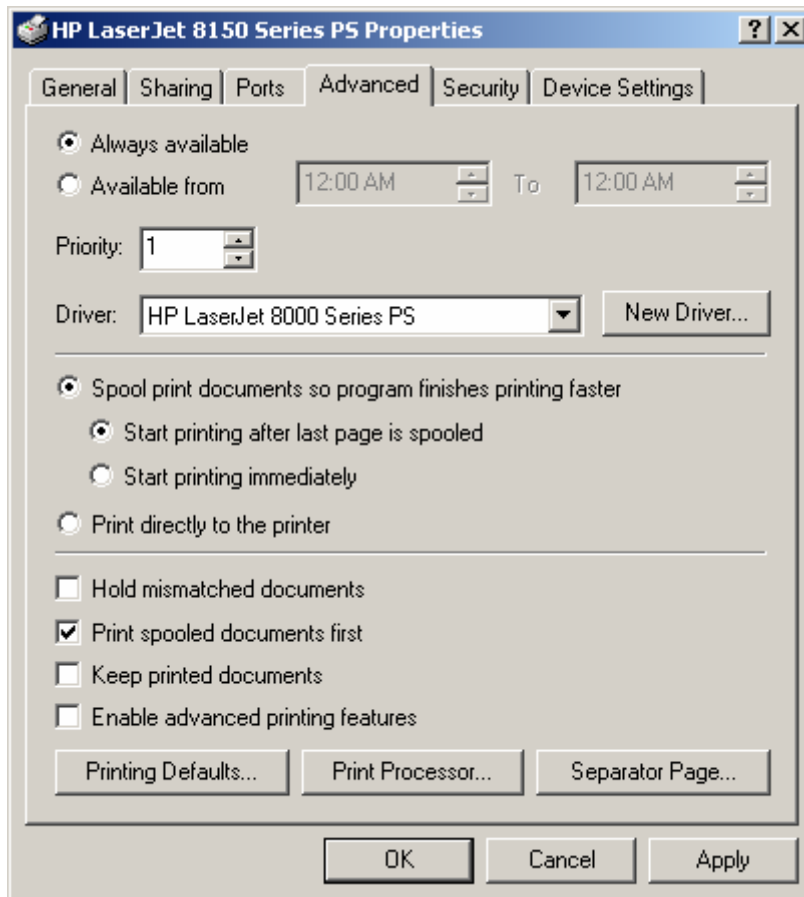
1. On the Print Server:

- declare a local printer using a local port [\\enduserpc\sharename](#)



- share this printer

- check “Start Printing after last page is spooled” in the *Advanced* tab



2. On the end-user PC:

- declare a printer as a network printer located on the Print Server
“Network or queue name” is [\\printserver\sharename](#)