

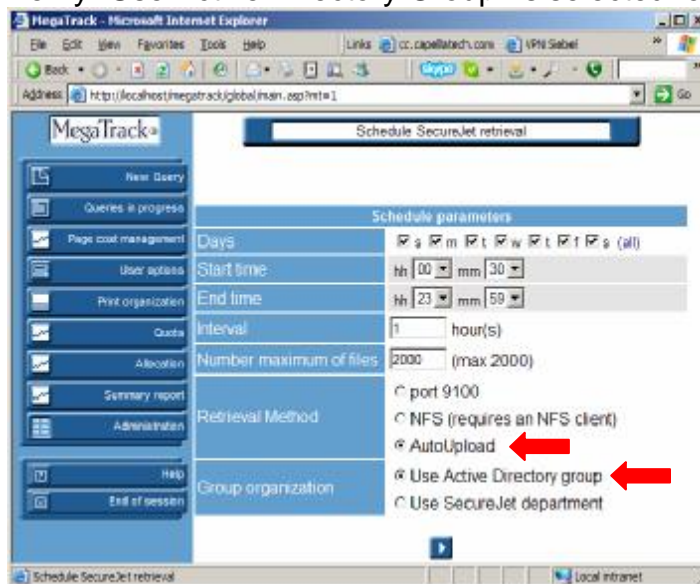
# SecureJet Integration with MegaTrack using AutoUpload

SecureJet has the ability to track print / copy jobs and populate a MegaTrack Database. This document explains how to configure SecureJet and MegaTrack for that integration.

## I. MegaTrack Configuration

### a. Configure "Schedule SecureJet Parameters"

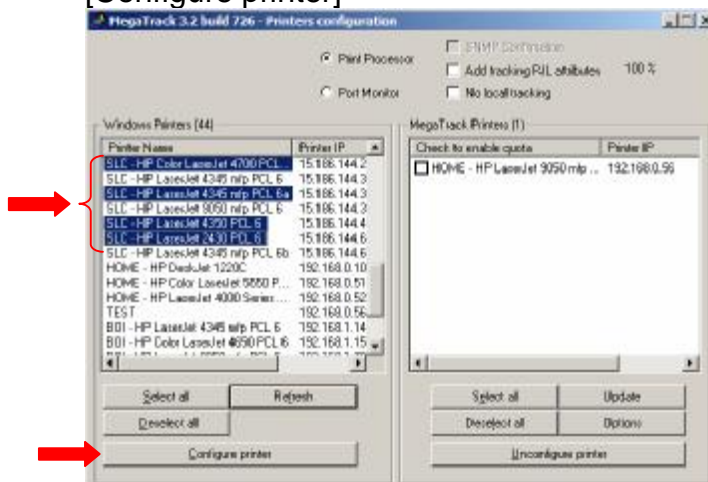
- i. Launch MegaTrack and navigate to the "Schedule SecureJet Parameters" link in the Administration section.
- ii. Verify "Auto Upload" is selected for the "Retrieval Method"
- iii. Verify "Use Active Directory Group" is selected for the "Group Organization"



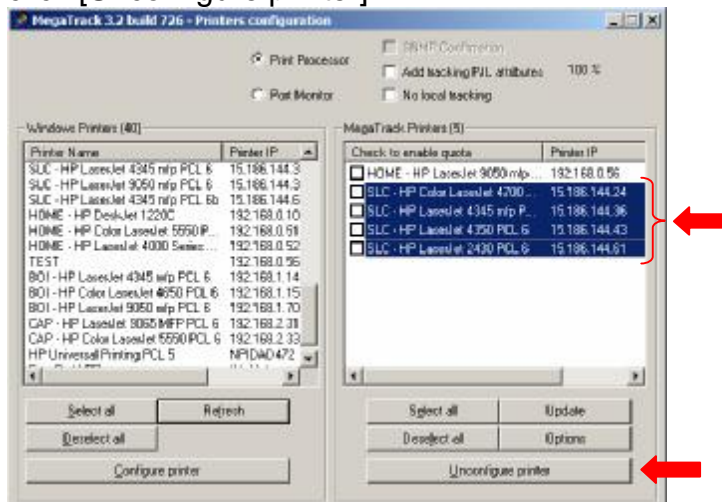
### b. MegaTrack Printer Configuration.

In order for MegaTrack to know the name of the printer, the printer must be configured at least once using the MegaTrack Printer Configuration utility, a component of the MegaTrack Print Server.

- i. Launch the MegaTrack Printer Configuration utility.
- ii. Select the SecureJet Enabled Printer(s) in the left (Windows Printers) section and click [Configure printer]



- iii. Select the newly configured printers in the right side (MegaTrack Printers) section and click [Unconfigure printer]



By Configuring and unconfiguring the printer, MegaTrack will update the database with the name and IP address of the printer and will then process the tracking information from SecureJet.

#### c. Verify FTP Site Connection

- i. On the MDS, verify the FTP site connection by starting a web browser and enter the following as the URL: <ftp://localhost/megatrackSJ> (login as anonymous)
- ii. Verify you can copy a file to this site.  
(Note: If site does not exist or any problems occur during step "c", verify the AutoUpload server was installed on the MDS and the IIS FTP Service is up and running. If problem persists, consult the MegaTrack Users Guide or contact support.)

## II. SecureJet Configuration

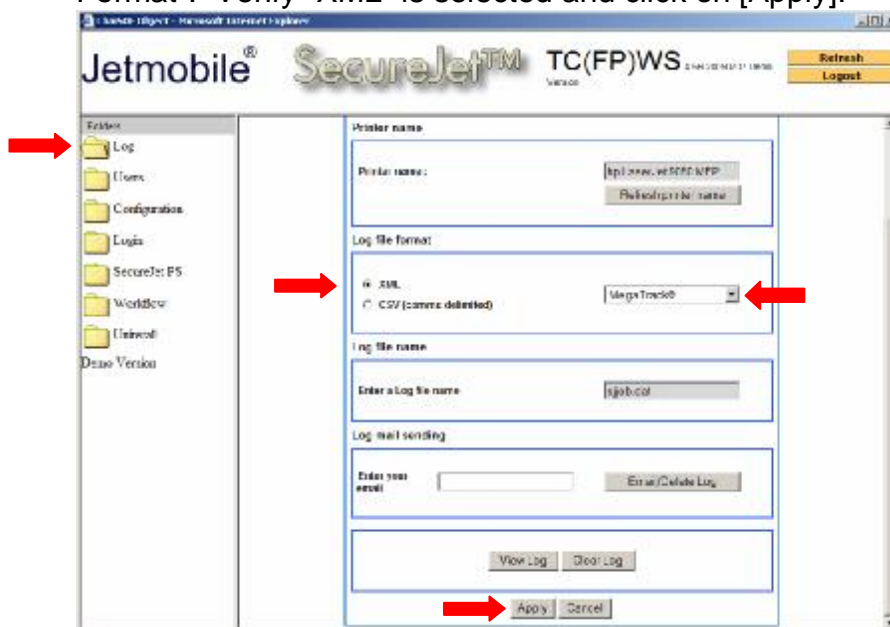
### a. Enable and Configure AutoUpload for each SecureJet Printer

This can be done via the web browser of each printer (instructions shown below) or via the SecureJet Admin Software for multiple printers at once. (See SecureJet Manual for Instructions).

- i. Open the Internet Explorer Web Browser and type in the IP address of the printer to configure.
- ii. On the Settings Tab, click on the "SecureJet" Link at the bottom left of the page.  
(Note: If the settings tab is not listed, you will need to log into mfp by clicking on "Log In" at the right side of the screen. If you did not create a username and password before installing SecureJet on the printer/MFP, the default login will be: Username: admin; Password: 111111111 (9 ones))

Continued on next page...

- iii. Click on the “Log” folder and Select “MegaTrack” in the drop down list as the “Log File Format”. Verify “XML” is selected and click on [Apply].



- iv. Click on the “Auto-upLoad” folder on the left, select “Use Auto-upLoad” and [Apply] the settings.  
 (Note: The “Auto-upLoad” folder should appear after applying the settings from step “iii”. If after completing step “iii” above, the “Auto-upLoad” folder does not appear, right mouse click on the left side of the screen and select “Refresh”. This should refresh the page and display the “Auto-upLoad” folder.)
- v. Follow the instructions on the page and reboot the printer.
- vi. Once the printer has rebooted and is ready, go back into the SecureJet Embedded Web Server Pages (steps di & dii above) and click on the “Auto-upLoad” folder again.
- vii. Enter the appropriate information pertaining to your environment:
- Delay/Run every: 60 (This is how often (minutes) SecureJet will push the files to the MDS)
  - IP:port: xxx.xxx.xxx.xxx:21 (This is the IP Address of the MDS Server AND FTP Port number. (default is 21 – Make sure the “:” is between the IP address and the Port number.)
  - Login: anonymous (This is the login to the MegaTrack FTP site. Default is “Anonymous”)
  - Password: mt (The password can be anything, however it cannot be blank)
  - Initial Directory: /megatrackSJ (This is the directory for SecureJet in the MegaTrack FTP site.)

**Auto UpLoad**

Setup

Use Auto UpLoad

Configuration

Delay: 60 min

IP:port: 130.0.0.21

Login: anonymous

Password: \*\*\*\*\*

Initial directory: /megatrackSJ

- viii. Reboot the printer after the settings have been Applied. ([Apply])

## b. Notes:

- i. Any changes in the ftp configuration will require a reboot of the printer.
- ii. After the configured time (default 60 minutes), you should see a new directory in “..\Program Files\Capttech\MegaTrack\TemporarySJ” folder for each SecureJet printer. The names of these directories will be the IP addresses of the printers.
- iii. The printers will push encrypted XML files into their respective folders. They will have a .enc extension.
- iv. MegaTrack will process the files according to the scheduled job retrieval time configured in the Administration Section of MegaTrack.