



JetCAPS® ThinPrint® Client Chai Service

printing in server-based and mobile environments

The bandwidth control, print-job compression, streaming support (and more) of JetCAPS ThinPrint Client Chai Service make it a perfect match for server-based computing.

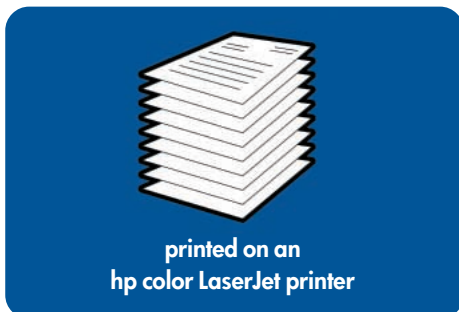
You have already deployed server-based computing to optimize your use of IT resources. But network printing remains a problem, using lots of LAN or WAN bandwidth for communication, and server processing power for spooling. And the more impressive your output – using color or high resolution images – the heavier the strain on your network resources. The ideal solution would be a “thin” printer, capable of handling highly compressed data and controlling its usage of bandwidth.

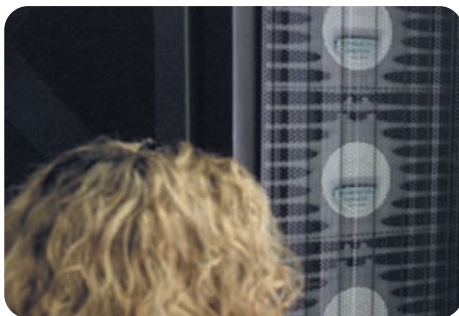
JetCAPS ThinPrint Client Chai Service uses the successful, resource-oriented bandwidth reduction of ThinPrint technology to provide you with the full printing power and flexibility of HP LaserJet printing. ThinPrint technology runs on the server and printer. It reduces your network load and ensures that only a limited part of the available bandwidth is used by your printing processes. It also eliminates much of the administration effort associated with ensuring that the right software is on all your users machines – particularly important as your way of working and your information becomes increasingly mobile.

how JetCAPS ThinPrint Client Chai Service works

JetCAPS ThinPrint Client Chai Service is easily installed by inserting it into an available DIMM slot in the HP LaserJet printer, and uses the embedded virtual machine of HP’s Chai technology. The ThinPrint Server software runs on your server and is especially developed for use with Microsoft Terminal Services and Citrix MetaFrame.

The user prints normally – there is no additional drivers or processes on the user’s machine, and the ThinPrint Server software intercepts the print data, applies compression algorithms and makes sure that the data flow does not use too much bandwidth on its route to the printer. When the print job reaches the printer, the JetCAPS ThinPrint Client Chai Service then decompresses it, and prints it.





characteristics

- fully supports ThinPrint printing
- enables printing over low bandwidth connections
- provides resource-oriented bandwidth control
- supports any 'quality of service' system, by separating the print stream on a port basis

special features

- low cost, high compression data transmission
- ThinPrint Server only on the terminal server(s) and/or print server(s) – but not on client machines
- tcp/ip based
- can be managed centrally using the embedded web-server

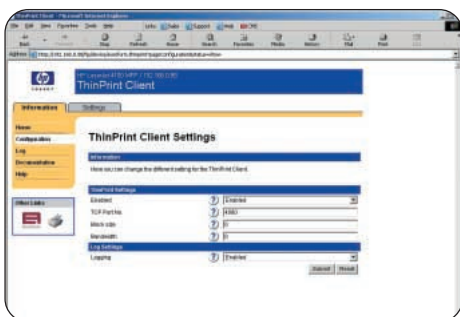
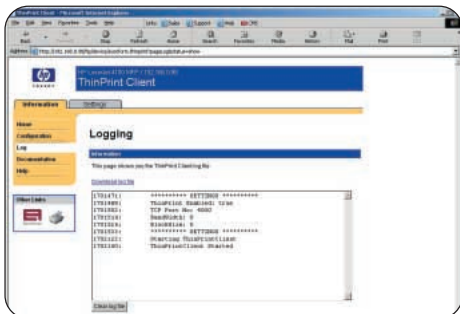
areas of application

- server-based computing
- application service provision
- mobile computing

ordering information

- Available for HP LaserJet 4100, 4200, 4300 and 9000 series printers, for HP Color LaserJet 4600 and 5500 series printers, and for HP LaserJet 4100mfp and 9000mfp and HP LaserJet 2300.

For further information please contact your local JetCAPS Partner at www.jetcaps.com/jetcaps/partner



Some of the products mentioned in this brochure are developed by third-party companies – in most cases, in close co-operation with HP. The third-party company that provided the specifications and descriptions in this document, is responsible for the performance of these third-party products.
All agreements, warranties or understandings take place between the respective vendors and the purchaser.
All designations and product names are trademarks or registered trademarks of the respective company.
This document is non-contractual. Specifications and descriptions of products can be modified at any time without prior notice.
© Hewlett-Packard Company and EuroForm, Smørum, Denmark 2003
Design by B.O.L.A.Y. GmbH, Germany
March 10, 2003/ds_thinprint