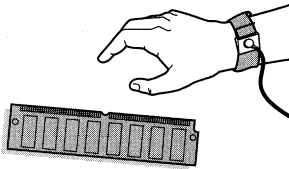


ThinPrint Client DIMM

User Guide



Caution

DIMM boards and your printer formatter board can be damaged by small amounts of static electricity. When handling a DIMM or other board, wear an antistatic wrist strap connected to the metal frame of the printer (or to your antistatic system). During installation, to prevent generation of static electricity, avoid moving about the work area.

Warranty

The information contained in this document is subject to change without notice.

EuroForm makes no warranty of any kind with respect to this information.

EUROFORM SPECIFICALLY DISCLAIMS THE IMPLIED WARRANTY OF MERCHANTABILITY AND FITNESS FOR PARTICULAR PURPOSE.

EuroForm shall not be liable for any direct, indirect, incidental, consequential, or other damage alleged in connection with the furnishing or use of this information.

Publication number UG-TPC-UK-01

© Copyright EuroForm A/S 2003. All rights reserved.

Table of Contents

Table of Contents	3
Introduction	4
About this Manual	4
System Requirements	4
Support.....	4
Configuration and Management	5
How to Access the Web Interface	5
What the Web Interface Offers	6
Configuration Parameters	7
Enabled	7
TP TCP Port	7
Block Size	7
Enable Log.....	8
Appendix A. Technical Specifications	9
Appendix B. Related Publications.....	11
Appendix C. Glossary.....	12

Introduction

About this Manual

Thank you for purchasing the ThinPrint Client DIMM providing Full **ThinPrint® Support** for your Hewlett-Packard LaserJet printer. This document describes the configuration of the ThinPrint Client DIMM solution. It will help you to understand, use and change the option settings for receiving compressed print jobs with full bandwidth control from a ThinPrint .print Server Engine.

The ThinPrint Client DIMM package includes printed information on how to install the DIMM, what the system requirements are, and how to get started with the ThinPrint Client. If you need basic information about your HP LaserJet printer set-up or general printer operation, please refer to the specific printer documentation from HP.

System Requirements

Either the ThinPrint .print Server Engine or the ThinPrint .print Server Engine for Terminal Services must be installed and running. In order to print in server-based and mobile environments, the printer must have an HP JetDirect network card installed. For additional information, see the appendix on Technical Specifications.

Support

If you encounter any problems or if you have further questions please contact your point of purchase, who will also be able to give you information on where to get firmware updates, upgrade utilities, updates to this User Guide, tools and personal assistance.

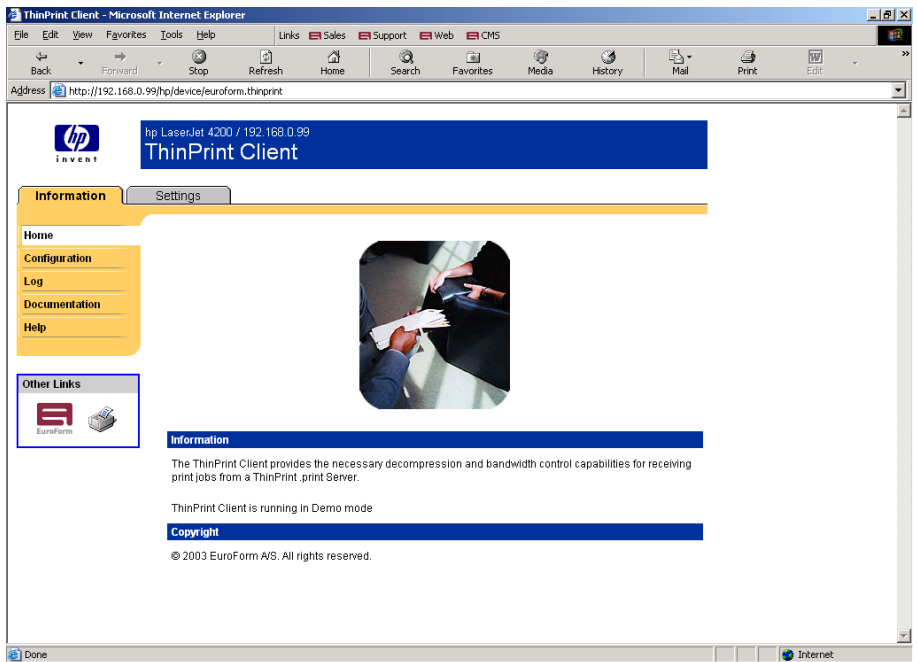
Please contact HP for printer or JetDirect print server firmware updates.

Configuration and Management

How to Access the Web Interface

Use the web interface for configuration and management. It is implemented as a Chai Service running on the printer's embedded web server and can be accessed by typing the printer's IP address in a standard web browser.

If your printer's IP address is 192.168.0.97, then simply type <http://192.168.0.97/> in the address bar of your browser. Click on the button in the left menu labeled “ThinPrint Client”. You will then be presented with the following web page, which is the home of the ThinPrint Client web interface environment.



You can also reach this page directly by typing e.g. <http://192.168.0.97/hp/device/euroform.thinprint>

The left menu gives access to different sub web pages where you can alter configuration parameters or use the other features provided with the solution.

What the Web Interface Offers

From the ThinPrint Client DIMM home page you have the following options:

Configuration

This web page is where you can enable ThinPrint, change configuration parameters, enable/disable the logging feature for debug purposes and reset all parameters to the factory default settings.

Log

This web page allows you to view the log file, download it to your local hard drive and clear it.

Documentation

This web page gives access to this User Guide, which is stored on the ThinPrint Client DIMM in PDF format.

Help

This web page contains additional information and help. It also shows the firmware version.

On-line help for individual parameters

The web interface environment includes an on-line help system. All parameters marked with a question mark have online help available. This can often save you the trouble of looking in the Guide.

Configuration Parameters

Enabled

This parameter enables/disables ThinPrint printing on this device.

Enable	The embedded ThinPrint Client is active.
Disable	The embedded ThinPrint Client is inactive.

TP TCP Port

This parameter will select the TCP/IP port to be used for ThinPrint printing.

4000	Default ThinPrint TCP port.
<port #>	Select a different ThinPrint TCP port. Valid values are 1025 - 9099 and 9101 – 65334.

Note: On the ThinPrint Server's Port Manager you must create a printer object on the chosen port. The name is always built up like this:

Syntax: IP_address#printer_name

Example: 192.168.0.97#hp LaserJet 4100

In the dialog for creating the object, the port manager will suggest the name of the printer driver; you are free to change this.

Block Size

This parameter sets the block size in kilobytes (Kbytes)

0	Default. Use ThinPrint Server Engine specified value (16 Kbytes).
<#>	Use this client specified value. Valid values are 1 - 1024.

Bandwidth

This parameter sets the maximum bandwidth uses for transmission of print jobs to this client in bits per second (bit/sec).

0 Default. Use ThinPrint Server Engine specified value
<#> Use this client specified value.
Valid values are 100 - 1000000.
Please note that this value will only be used if it is less than the value specified on the ThinPrint Server Engine for the TP TCP Port.

Enable Log

This parameter will enable/disable logging of all ThinPrint Client activities. Use logging for debugging purposes only.

Appendix A. Technical Specifications

Features	Enables printing over low bandwidth connections Low cost, high compression data transmission Provides resource-oriented bandwidth control Supports any 'quality of service' system, by separating the print stream on a port basis ThinPrint Full Support No software required on client machines Managed centrally using the embedded web server
Server Software	ThinPrint .print Server Engine or ThinPrint .print Server Engine for Terminal Services
Network Protocol	TCP/IP
Network Attachment	HP JetDirect 610N Internal Print Server P/N J4169A (Firmware version L.20.14 or later) HP JetDirect 615N Internal Print Server P/N J6057A (Firmware version L.22.08 or later)
Browser for Configuration and Management	JavaScript 1.1 must be enabled. The minimum requirement is Microsoft Internet Explorer 5.5. For optimal performance we recommend using Microsoft Internet Explorer 6.0.

Supported Printers

HP LaserJet 4100 series
HP LaserJet 4200 series
HP LaserJet 4300 series
HP LaserJet 9000 series
HP LaserJet 4100mfp series
HP LaserJet 9000mfp series
HP Color LaserJet 4600 series
HP Color LaserJet 5500 series

Appendix B. Related Publications

ThinPrint GmbH publications:

- .print Server Engine QuickStart
- .print Server Engine for Terminal Services QuickStart
- .print Server Engine Manual
- .print Server Engine for Terminal Services Manual
- ThinPrint .print Overview
- Best Practice Printing Guide
- ThinPrint Professional Support
- Tips for Configuring ThinPrint .print

These documents are all available from the download section of

<http://www.thinprint.com>

Appendix C. Glossary

Bandwidth	The capacity of a network or data connection for digital transmission, usually measured in bit/second (bit/s, bits/sec, or bps) or in Kilo-bit/ second (kbit/s, kbits/sec, or kbps).
Client	The computer on which the print application runs is called the client. This application, which can also be run on the print server, is often referred to as the print client in technical documentation. The client operating system can also be UNIX or Mac OS, for example.
Server based Computing	A server-centric basis for enabling user access to applications, with application logic being run on the server and only user interface transmitted through the network.
Terminal Services	A Windows 2000 service under Windows 2000 Server /Windows XP Professional