



## **FollowMe Printing**

# **Web Printing Feature Manual**

<b>Revision</b>	<b>Date</b>
4.0.0.0	24/07/2003

## **WPF - Introduction**

FollowMe Printing - Web Printing Feature is a new concept to the FollowMe Printing system. The web printing feature allows printing to occur without the aid of client side drivers or printers it is a true server based printing system.

The system has been designed to be robust and able to print any host of documents from the Microsoft Office suite of products.

## **FMP - Copyright/Disclaimer/Trademarks**

### **Copyright**

Copyright 2000-2003 © Ringdale (UK) Ltd. All rights reserved. No part of this publication may be reproduced, transmitted, transcribed, stored in a retrieval system, or translated into any language or any computer language, in any form or by any third party, without prior permission of Ringdale (UK) Limited.

### **Disclaimer**

Ringdale (UK) Ltd. reserves the right to revise this publication and to make changes from time to time to the contents hereof without obligation to notify any person or organisation of such revision or changes. Ringdale (UK) Ltd has endeavoured to ensure that the information in this publication is correct, but will not accept liability for any error or omission.

**Note:** Because of the fast pace of software development it is possible that there will be minor differences between the manual and the actual release of the program.

### **Trademarks**

All trademarks are hereby acknowledged.

## **WPF - Pre-requisites**

**Note:** FollowMe Printing - Web Printing Feature has a set of pre-requisites that are required before installation of the software should occur.

## **WPF - Server Pre-requisites**

### Operating System:

- Windows NT/2000/2003/XP or above

### Database:

- Microsoft SQL Server 7.0 or above (with a pre-configured FollowMe Printing SQL database).

### Web Server:

- Internet Information Services 4.0 or above.

### Applications:

- Internet Explorer 5.5 and above.
- FollowMe Printing Q-Server 3.06.006 and above.
- Adobe Acrobat 5 and above.
- Microsoft Office 2000 and above (pre-configured ensuring all applications run without prior pop-up's or registration requests).

## **WPF - Configuration**

To install the FollowMe Printing - Web Printing Feature follow the steps below:

**Note:** Ensure that the pre-requisites are installed before you proceed with the installation of the Web Printing Feature.

- 1) Run the FollowMe Printing - Web Printing Feature installer
- 2) You will be asked which folder the installation files should be stored in, this is by default your Internet Information Server (IIS) root folder (e.g. C:\InterPub\wwwroot\)
- 3) Click 'Finish' to complete the installation

**Note:** Folder rights must be set for the Web Printing Feature to function correctly.

## WPF - System Folder Rights

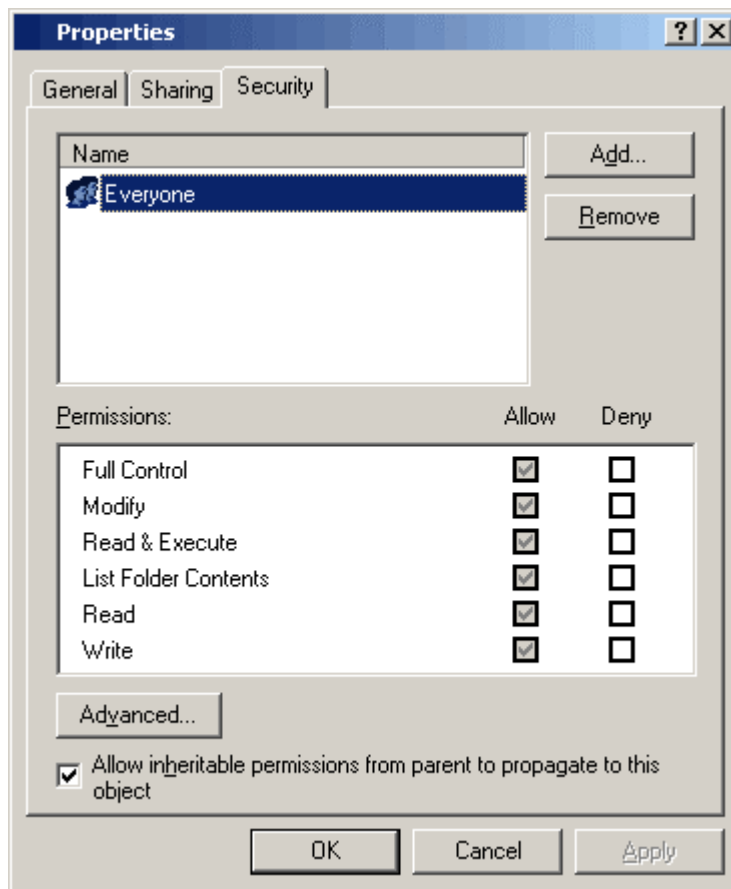
The Web Printing Feature requires that the data directory directory that the FollowMe Printing Q-Server uses and the components directory from the installation of the WPF have 'Full Access' privileges for the default Internet Information Services (IIS) user.

### Setting System Folder Rights

- 1) Open up Windows explorer
- 2) Go to the data folder to be used for both FollowMe Printing and the Web Printing Feature (e.g. C:\Program Files\Ringdale\FM Q-Server\data\)

**Note:** This process must be repeated for the 'components' folder (e.g. c:\InetPub\wwwroot\components\)

- 3) Right click on the folder name and select the 'Properties' option
- 4) Now select the 'Security' tab along the top



- 5) Check to see if the IUSR\_MACHINENAME (where MACHINENAME is the name of the server) is listed

If the user is not listed then click the 'Add' button

- a) A new dialog should display, now select the user from the list
- b) Click the 'Add' button
- c) Click the 'OK' button to close this dialog

- 6) Select the user and then ensure that 'Full Control' is checked

- 7) At the bottom of this dialog ensure that the 'Allow inheritable permissions from parent to propagate to this object' is NOT checked

- 8) Click the 'Apply' or 'OK' to save the above settings

## **WPF - Microsoft Office**

FollowMe Printing - Web Printing Feature uses the Microsoft Office for some of the Web Printing functions and therefore requires being setup in a set sequence.

Follow the following steps to ensure all Microsoft Office applications run without fault and the Web Printing Feature works first time:

- 1) Install Microsoft Office ensuring that all features are installed to the hard disk
- 2) Once installation has completed ensure that Microsoft Office has been properly registered
- 3) Run all Microsoft Office applications at least once to ensure that all registration and pop-up requests have be dealt with (e.g. Word, Excel, PowerPoint, Access, etc...)
- 4) Also ensure that the Microsoft Office Assistant is disabled

**Note:** If Microsoft Office is not properly installed or is not properly registered the system may not function correctly.

## **WPF - Web Client Administration**

The FollowMe Printing - Web Printing Feature is a fully customisable Web Printing Client that extends the capabilities of a web based printing system.

Through the use of Microsoft Active Server Page (ASP) technology and Hyper Text Mark-up Language (HTML) we are able to allow system administrators to customise the pages to fit their corporate image.

## WPF - File System Connection

When first visiting the Web Printing Feature web page you will be prompted to enter the following information:

The screenshot shows a web browser window titled "FollowMe Printing - Web Printing Feature (Web Client Administration) - Micro...". The browser's address bar is empty. The main content area features a green header with the "FollowMe Printing" logo and the text "Web Printing Feature Client Administration". Below the header are two tabs: "Data Connection" and "File System Connection". The "File System Connection" tab is selected, showing a form with the following elements:

- File System Connection:**
- Error:** No data for upload path specified
- Upload Folder:** [Empty text input field]
- Server IP:** [Empty text input field]
- Update** [Button]
- Cancel** [Button]

At the bottom of the page, the text "Copyright © 2003 Ringdale (UK) Ltd" is displayed. The browser's status bar at the bottom shows "Internet".

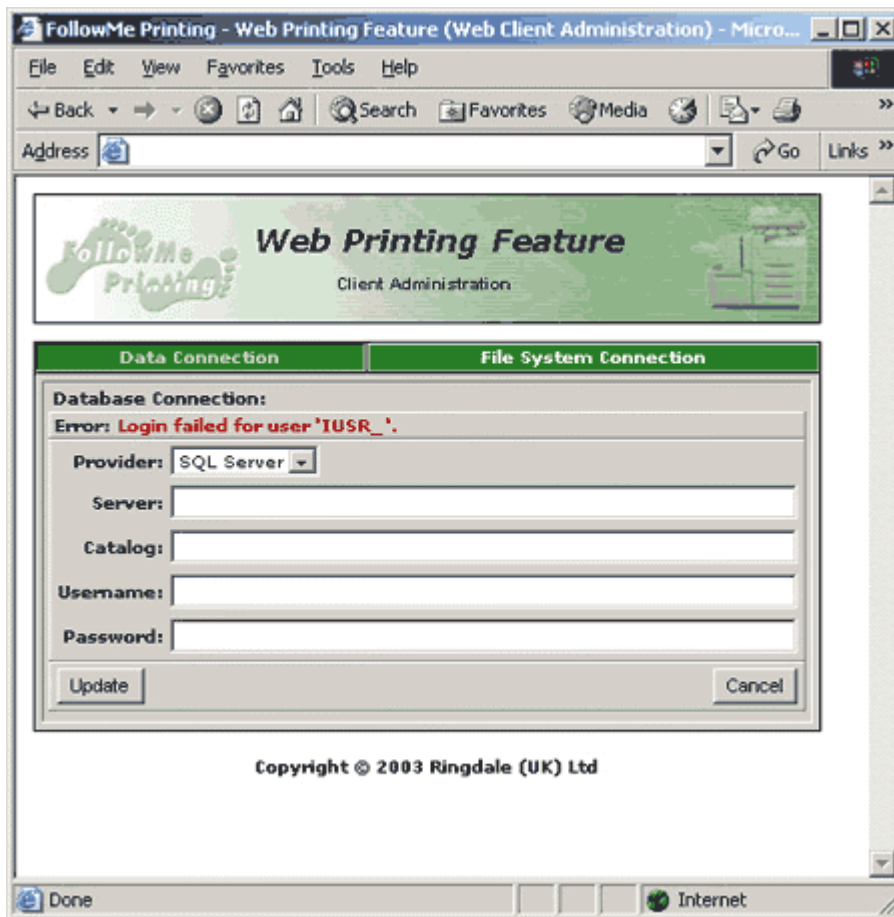
1) Please enter the data path which all files will be saved under in the 'Upload Folder' field

2) Please enter the Server IP Address in the 'Server IP' field

**Note:** These settings should be same as the ones which are specified in the FollowMe Printing Q-Server advanced configuration.

## WPF - Data Connection

When first visiting the Web Printing Feature web page you will be prompted to enter the following information:



**Note:** The Web Printing Feature will only function with a Microsoft SQL Server.

- 1) Enter the Microsoft SQL Server name (e.g. 127.0.0.1)
- 2) Enter the Catalog (database name)
- 3) Enter the Username for this catalog
- 4) Enter the Password for this catalog

**Note:** These settings should be same as the ones which are specified in the FollowMe Printing Q-Server configuration.